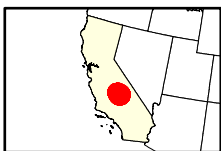
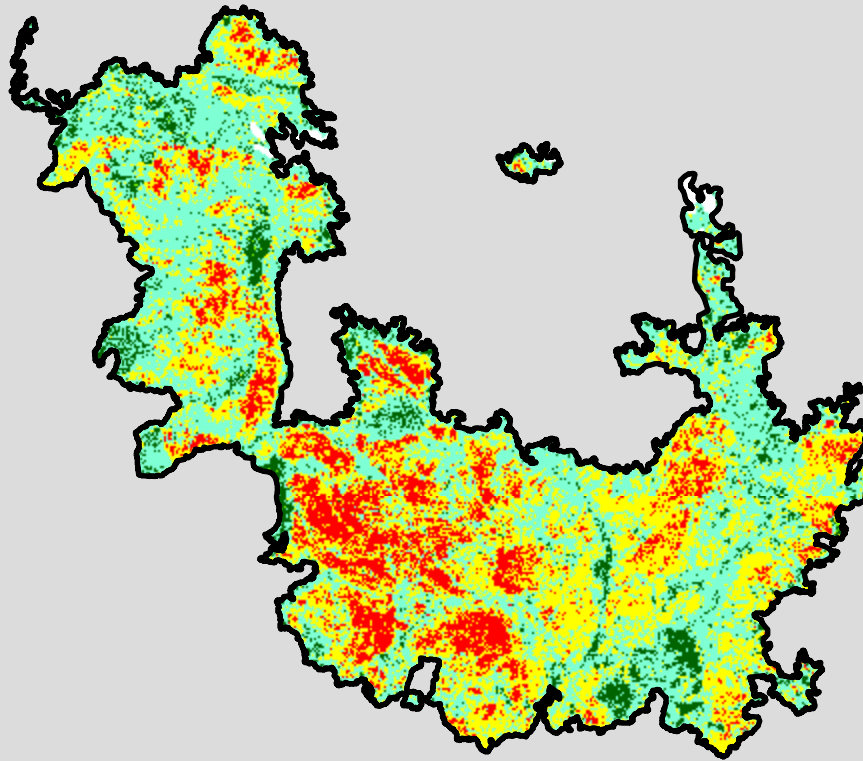
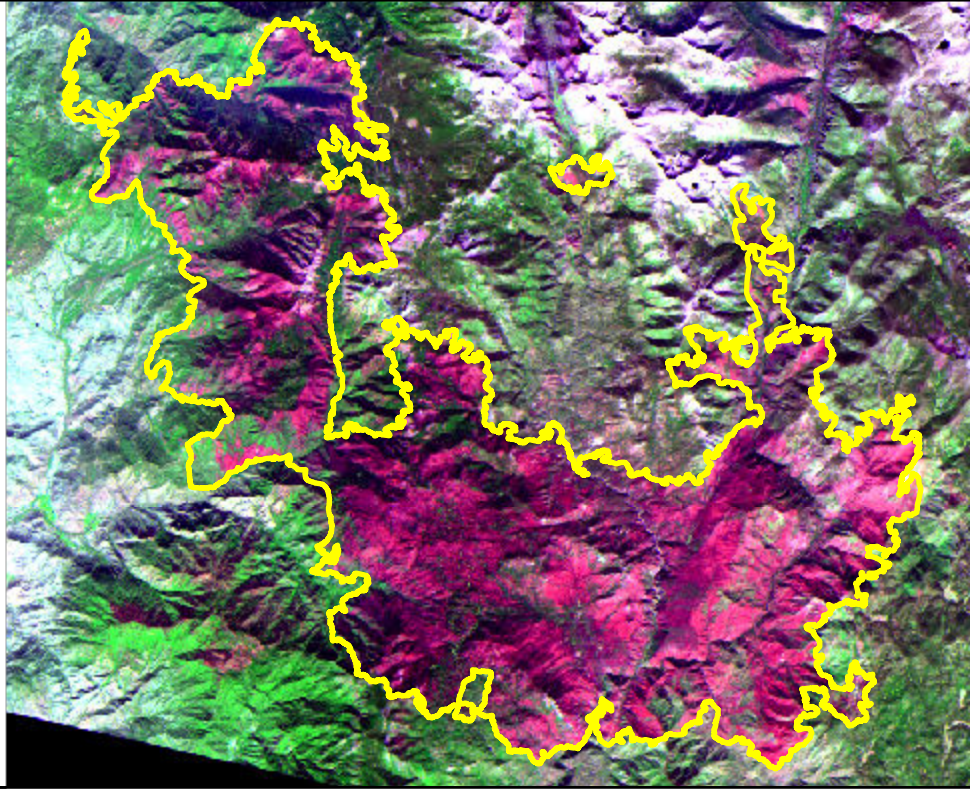


# 2020 California: CASTLE

ca3616111845220200819



Latitude: 36° 14' 02.4"  
Longitude: -118° 34' 26.4"  
Fire Ignition Date: August 19, 2020  
Assessment Type: Initial  
Pre-Fire Image Date: October 31, 2019 (S2A)  
Post-Fire Image Date: October 20, 2020 (S2B)



This map portrays fire severity for the fire specified in the map title and summarizes proportions of fire severity classes. These data are produced under the Monitoring Trends in Burn Severity (MTBS) program jointly implemented by the USGS EROS and the USFS GTAC. The MTBS program ascertains the locations of fires based on available fire occurrence information provided by federal and state agencies, and other reliable sources. The MTBS program reserves the right to correct, update or modify geospatial inputs to this map without notification.

\* Areas in either the pre-fire or post-fire reflectance imagery containing clouds, snow, shadows, smoke, significantly sized water bodies, missing lines of image data, etc.

0 8 16  
Miles

## Acreage of Burn Severity

Burn Severity	Acres
Unburned to Low	14,118
Low	77,643
Moderate	57,505
High	21,163
Increased Greenness	124
Non-Processing Area Mask*	1,261
<b>Total</b>	<b>171,813</b>