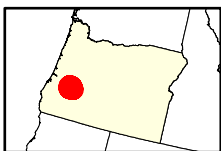
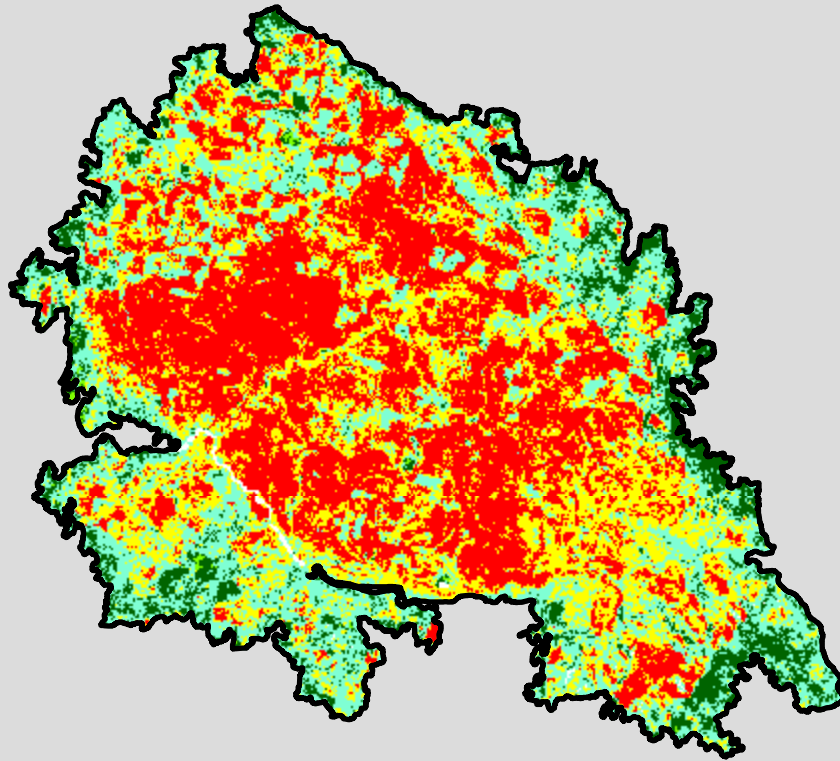


# 2020 Oregon: ARCHIE CREEK

or4333412278820200908



Latitude: 43° 21' 57.6"  
Longitude: -122° 53' 52.8"  
Fire Ignition Date: September 08, 2020  
Assessment Type: Initial  
Pre-Fire Image Date: October 21, 2018 (L8)  
Post-Fire Image Date: October 26, 2020 (L8)



This map portrays fire severity for the fire specified in the map title and summarizes proportions of fire severity classes. These data are produced under the Monitoring Trends in Burn Severity (MTBS) program jointly implemented by the USGS EROS and the USFS GTAC. The MTBS program ascertains the locations of fires based on available fire occurrence information provided by federal and state agencies, and other reliable sources. The MTBS program reserves the right to correct, update or modify geospatial inputs to this map without notification.

\* Areas in either the pre-fire or post-fire reflectance imagery containing clouds, snow, shadows, smoke, significantly sized water bodies, missing lines of image data, etc.

0 6 12 Miles

## Acreage of Burn Severity

Burn Severity	Acres
Unburned to Low	12,711
Low	36,126
Moderate	36,071
High	46,172
Increased Greenness	281
Non-Processing Area Mask*	390
<b>Total</b>	<b>131,750</b>