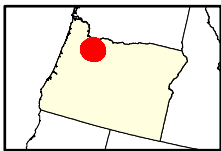
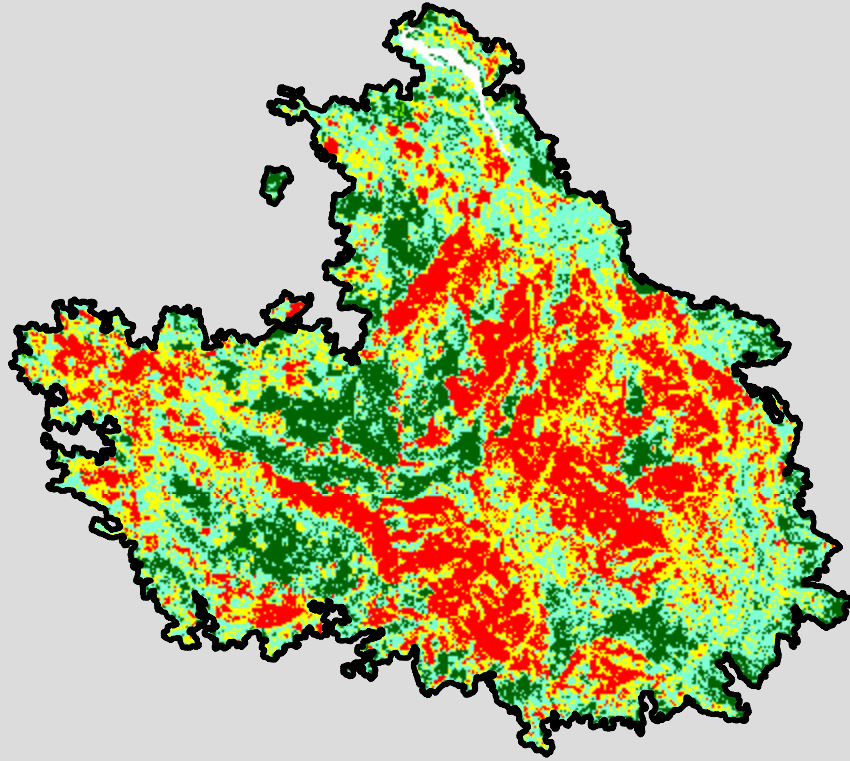
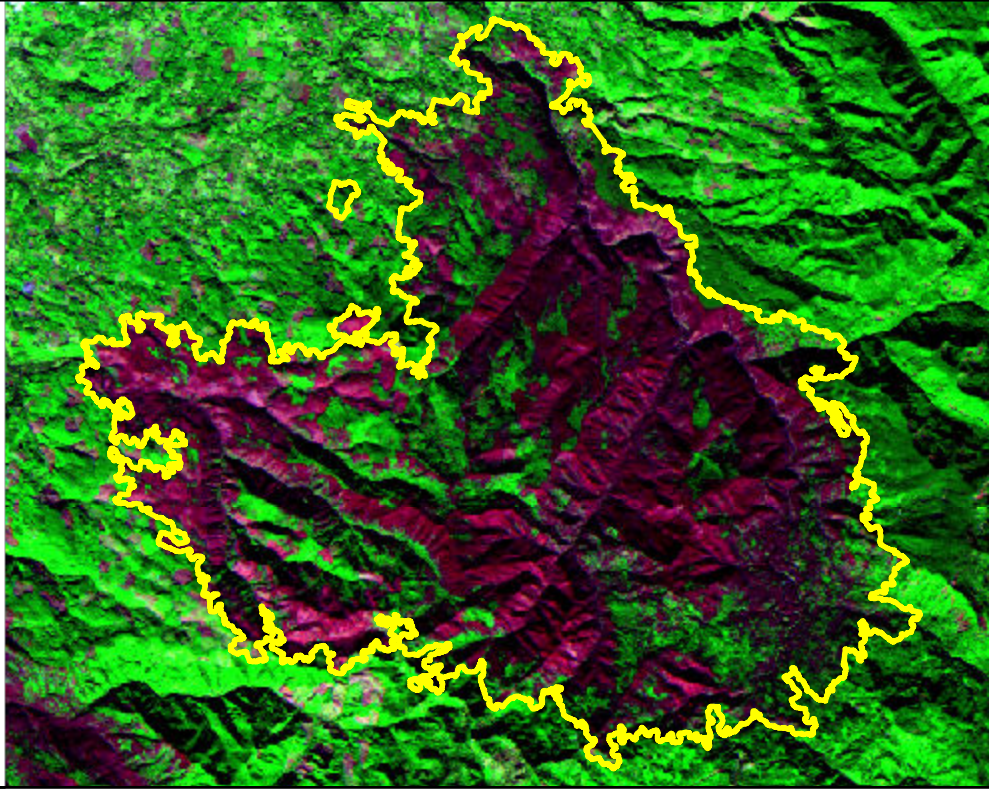


# 2020 Oregon: RIVERSIDE

or4504912206220200908



Latitude: 45° 07' 44.4"  
Longitude: -122° 13' 26.4"  
Fire Ignition Date: September 08, 2020  
Assessment Type: Initial  
Pre-Fire Image Date: October 30, 2019 (S2A)  
Post-Fire Image Date: October 29, 2020 (S2B)



## Acreage of Burn Severity

Burn Severity	Acres
Unburned to Low	25,036
Low	43,551
Moderate	33,805
High	34,828
Increased Greenness	141
Non-Processing Area Mask*	711
<b>Total</b>	<b>138,071</b>

This map portrays fire severity for the fire specified in the map title and summarizes proportions of fire severity classes. These data are produced under the Monitoring Trends in Burn Severity (MTBS) program jointly implemented by the USGS EROS and the USFS GTAC. The MTBS program ascertains the locations of fires based on available fire occurrence information provided by federal and state agencies, and other reliable sources. The MTBS program reserves the right to correct, update or modify geospatial inputs to this map without notification.

\* Areas in either the pre-fire or post-fire reflectance imagery containing clouds, snow, shadows, smoke, significantly sized water bodies, missing lines of image data, etc.

0 6.5 13  
Miles