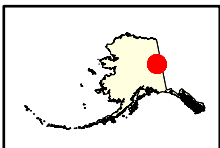
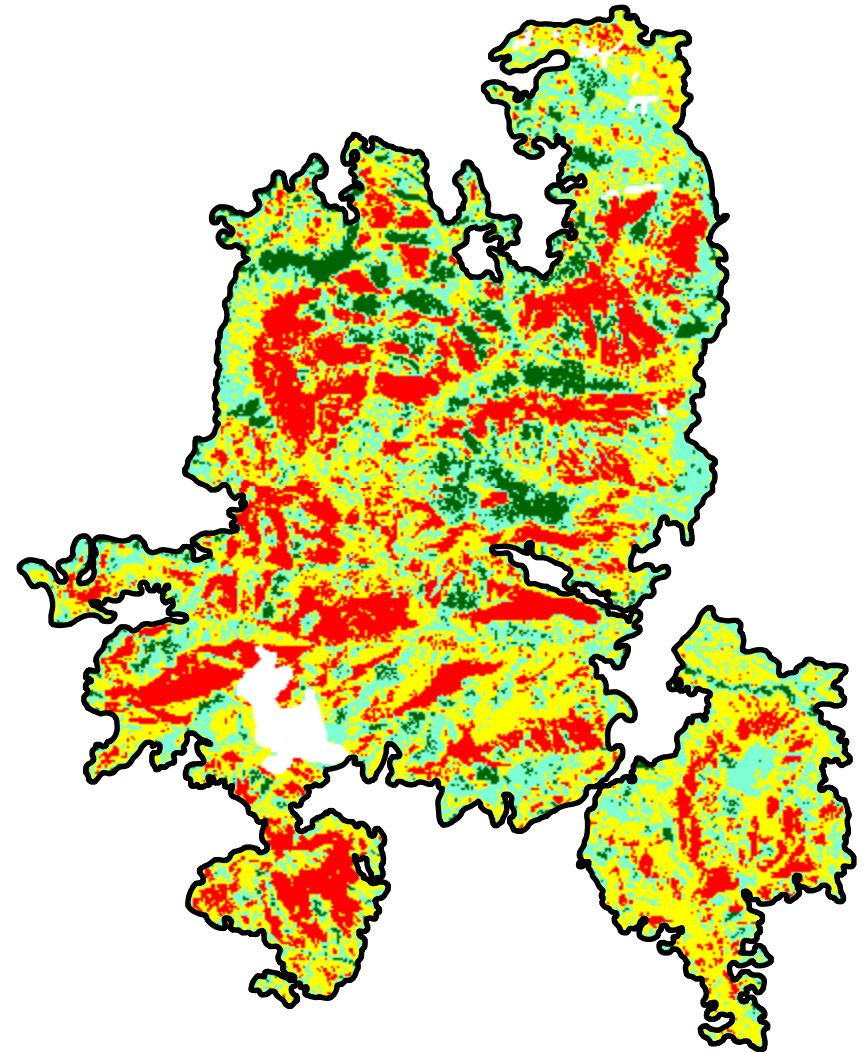
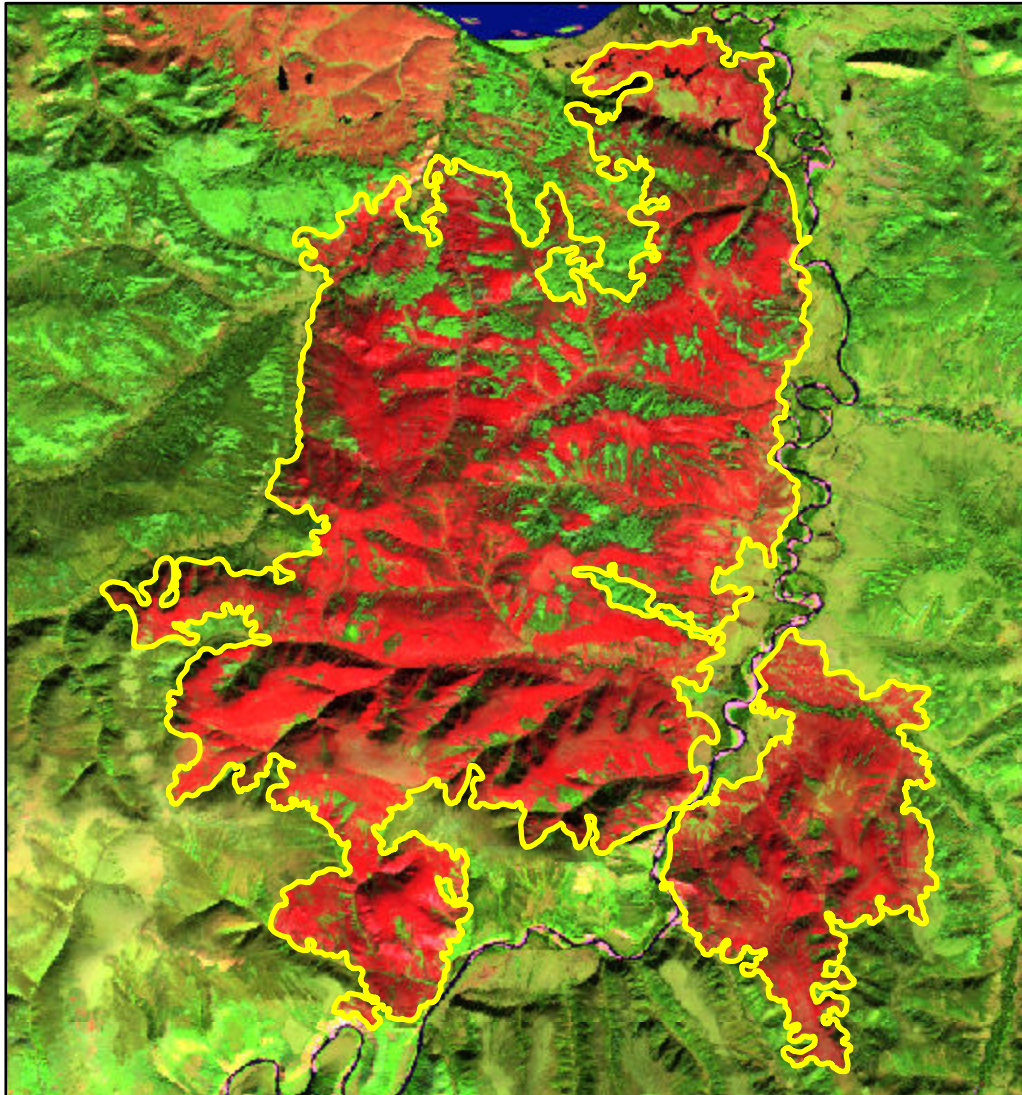


2021 Alaska: CULTAS CREEK

ak6522214290620210617



Latitude: 65° 12' 36.0"
Longitude: -142° 53' 38.4"
Fire Ignition Date: June 17, 2021
Assessment Type: Initial
Pre-Fire Image Date: September 06, 2020 (S2A)
Post-Fire Image Date: September 03, 2021 (S2B)



This map portrays fire severity for the fire specified in the map title and summarizes proportions of fire severity classes. These data are produced under the Provisional Initial Assessment (PIA) mapping project jointly implemented by the USGS EROS and the USFS GTAC. The PIA mapping project ascertains the locations of fires based on available fire occurrence information provided by federal and state agencies, and other reliable sources. The PIA mapping project reserves the right to correct, update or modify geospatial inputs to this map without notification.

0 3 6
Miles

Acreage of Burn Severity

Burn Severity	Acres
Unburned to Low	3,662
Low	11,866
Moderate	15,741
High	10,175
Increased Greenness	9
Non-Processing Area Mask*	830
Total	42,283