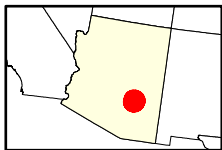
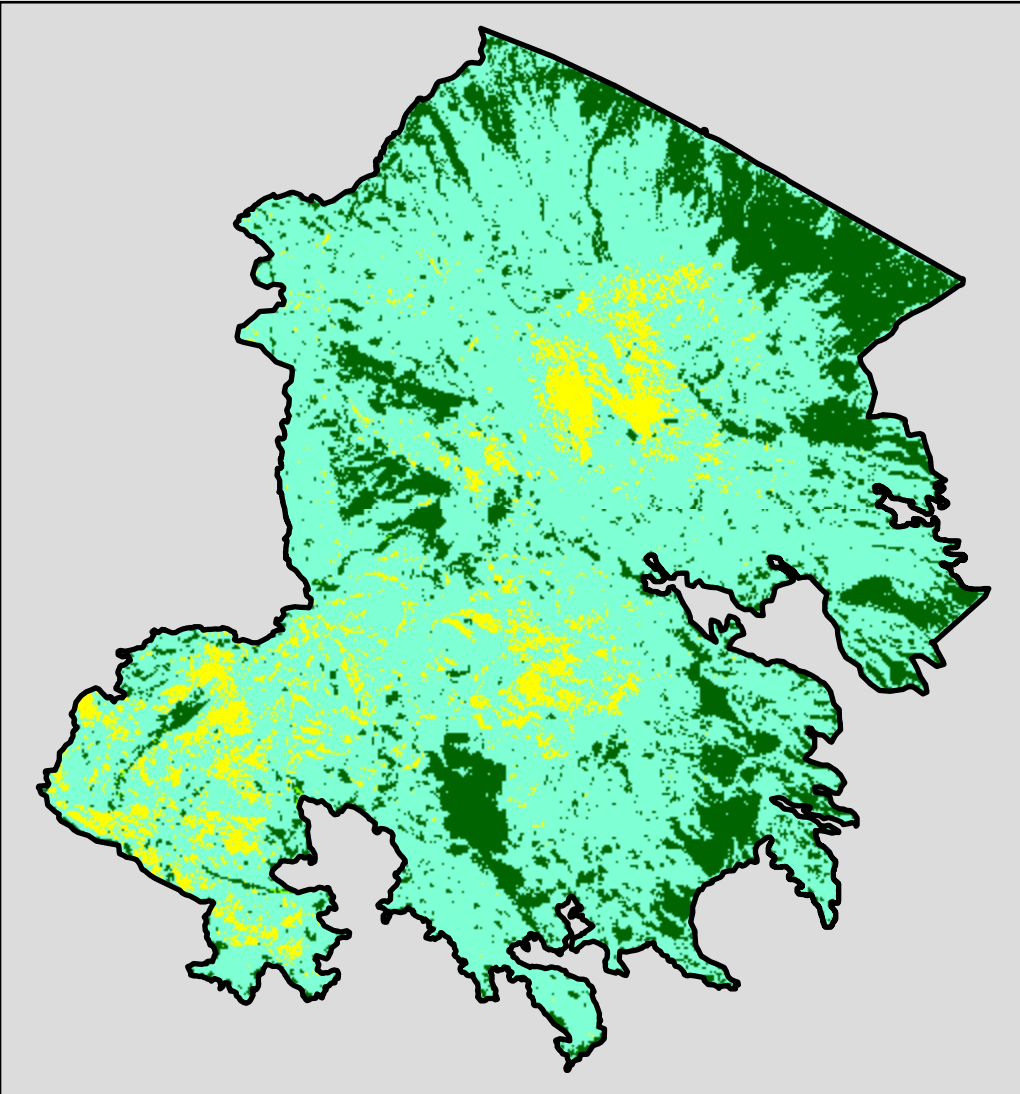
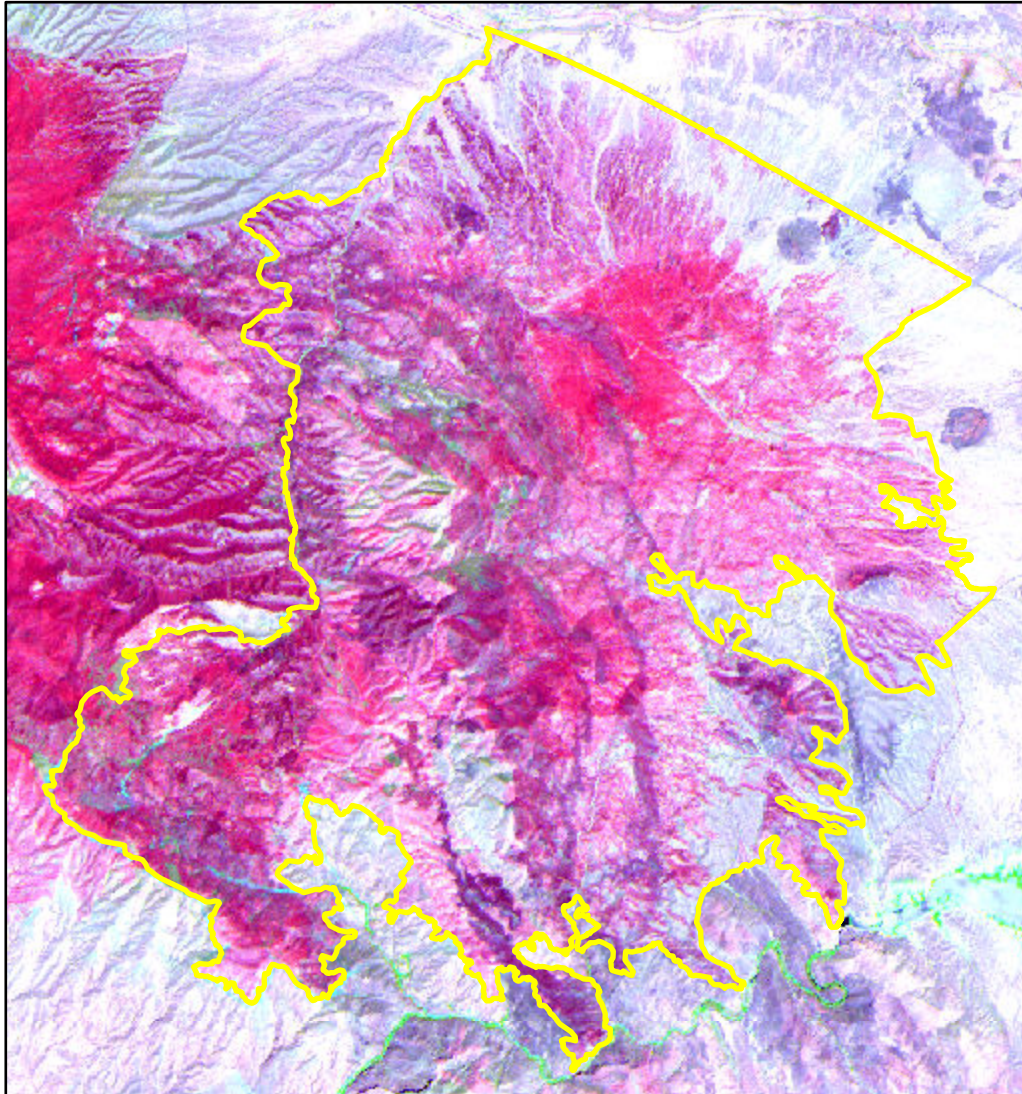


# 2021 Arizona: MESCAL

az3316611066420210601



Latitude: 33° 14' 38.4"  
Longitude: -110° 37' 08.4"  
Fire Ignition Date: June 01, 2021  
Assessment Type: Initial  
Pre-Fire Image Date: June 23, 2020 (S2B)  
Post-Fire Image Date: June 28, 2021 (S2B)



This map portrays fire severity for the fire specified in the map title and summarizes proportions of fire severity classes. These data are produced under the Monitoring Trends in Burn Severity (MTBS) program jointly implemented by the USGS EROS and the USFS GTAC. The MTBS program ascertains the locations of fires based on available fire occurrence information provided by federal and state agencies, and other reliable sources. The MTBS program reserves the right to correct, update or modify geospatial inputs to this map without notification.

\* Areas in either the pre-fire or post-fire reflectance imagery containing clouds, snow, shadows, smoke, significantly sized water bodies, missing lines of image data, etc.

0 3.5 7  
Miles

## Acreage of Burn Severity

Burn Severity	Acres
Unburned to Low	15,379
Low	52,708
Moderate	5,677
High	0
Increased Greenness	38
Non-Processing Area Mask*	0
<b>Total</b>	<b>73,802</b>