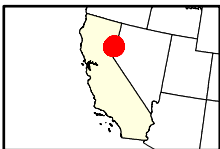
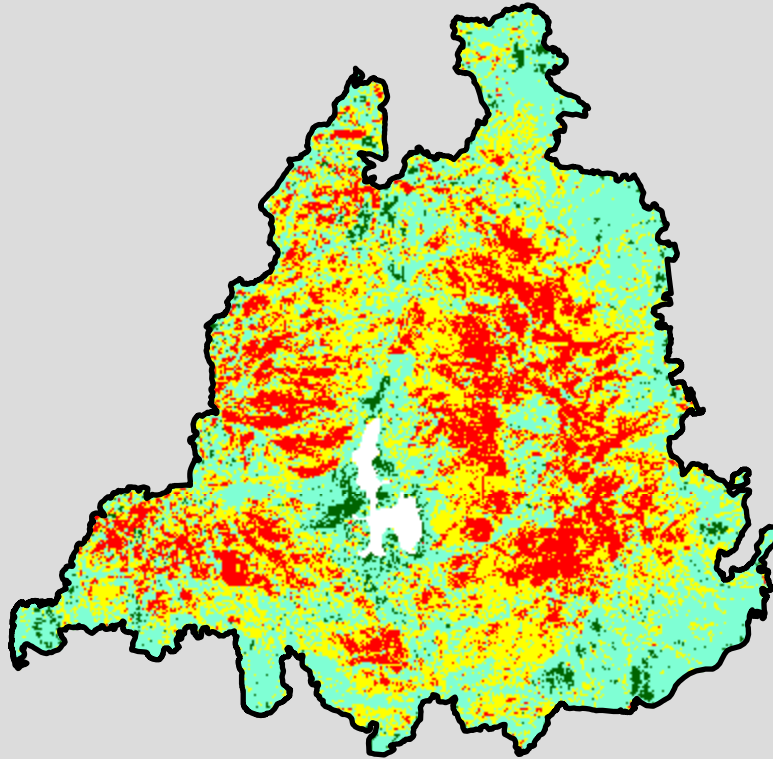
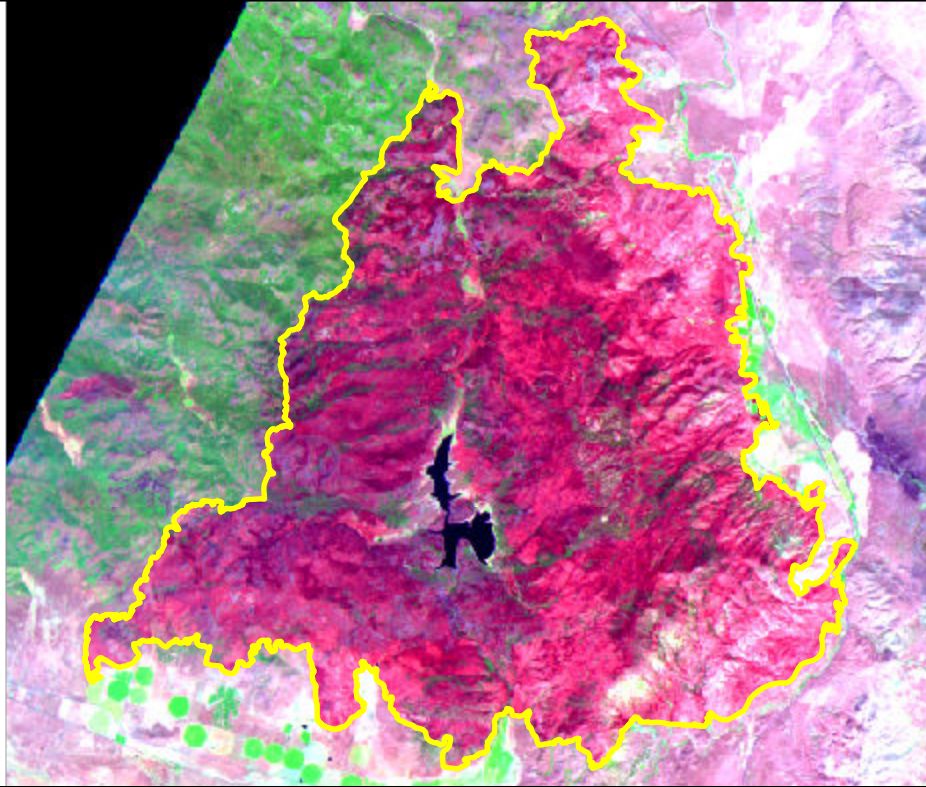


2021 California: SUGAR

ca3983912034520210702



Latitude: 39° 57' 21.6"
Longitude: -120° 10' 51.6"
Fire Ignition Date: July 02, 2021
Assessment Type: Initial
Pre-Fire Image Date: August 09, 2020 (S2A)
Post-Fire Image Date: August 19, 2021 (S2B)



This map portrays fire severity for the fire specified in the map title and summarizes proportions of fire severity classes. These data are produced under the Monitoring Trends in Burn Severity (MTBS) program jointly implemented by the USGS EROS and the USFS GTAC. The MTBS program ascertains the locations of fires based on available fire occurrence information provided by federal and state agencies, and other reliable sources. The MTBS program reserves the right to correct, update or modify geospatial inputs to this map without notification.

* Areas in either the pre-fire or post-fire reflectance imagery containing clouds, snow, shadows, smoke, significantly sized water bodies, missing lines of image data, etc.

0 6 12 Miles

Acreage of Burn Severity

Burn Severity	Acres
Unburned to Low	3,412
Low	44,008
Moderate	38,009
High	21,386
Increased Greenness	19
Non-Processing Area Mask*	1,374
Total	108,208