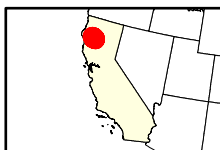
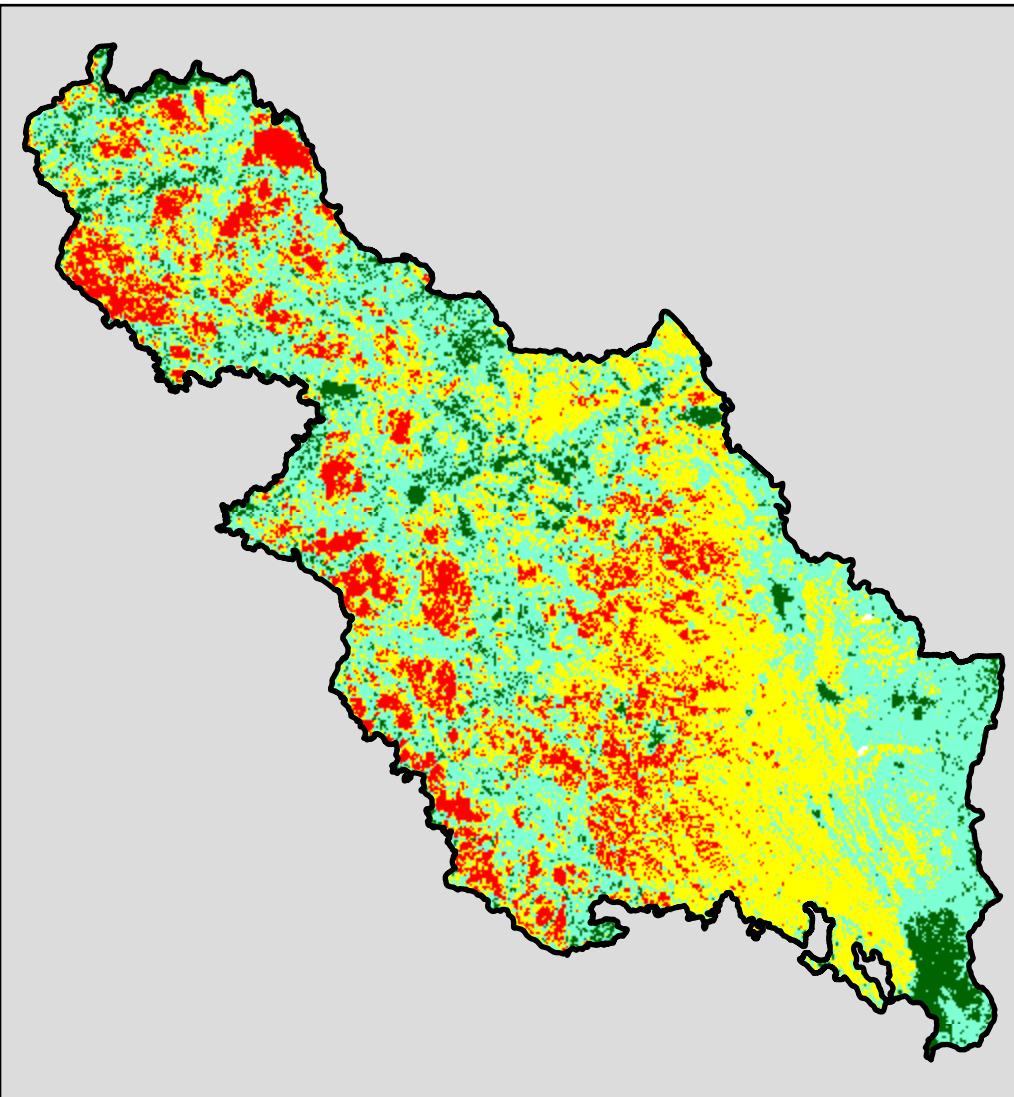
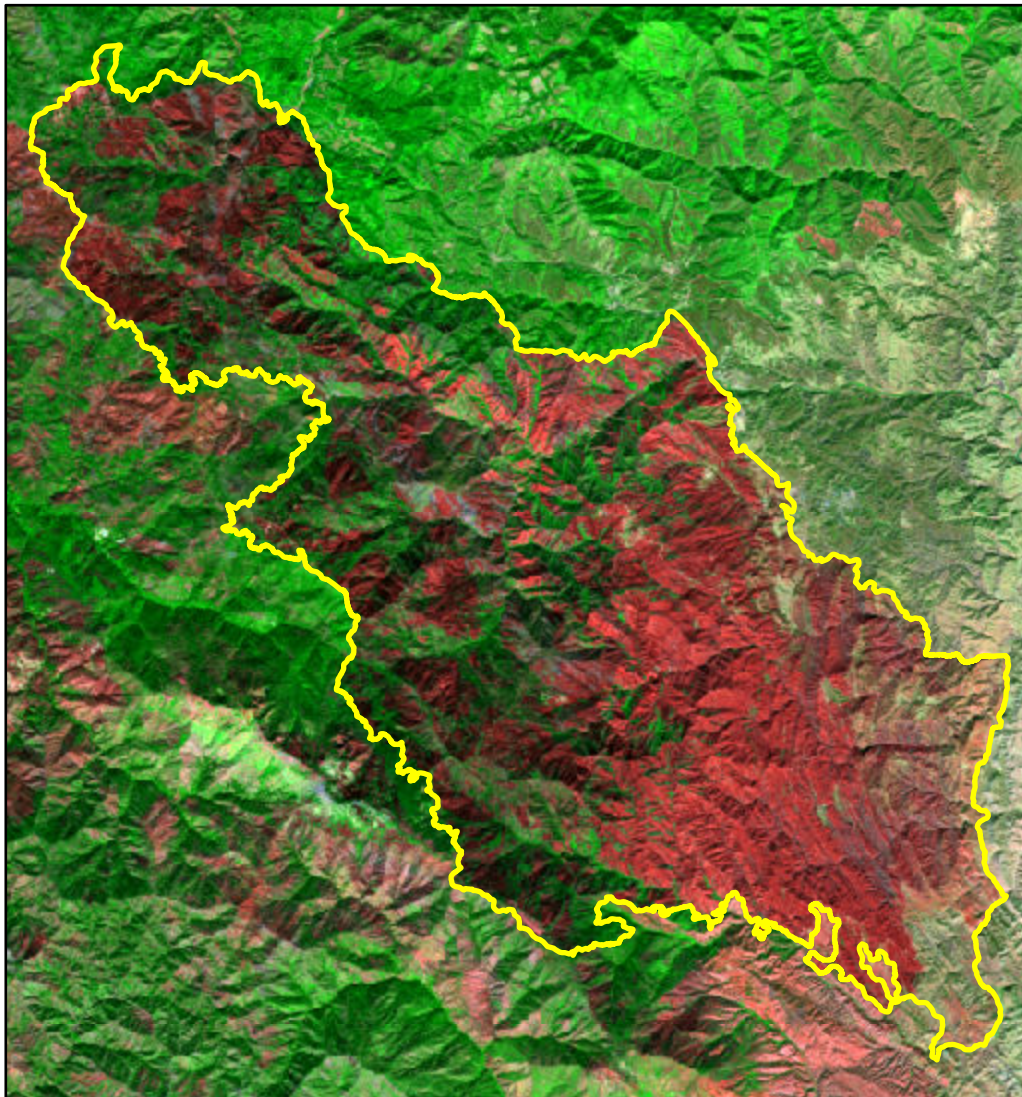


2021 California: MCFARLAND

ca4035012303620210730



Latitude: 40° 16' 40.8"
Longitude: -122° 55' 08.4"
Fire Ignition Date: July 30, 2021
Assessment Type: Initial
Pre-Fire Image Date: July 18, 2021 (L8)
Post-Fire Image Date: September 20, 2021 (L8)



This map portrays fire severity for the fire specified in the map title and summarizes proportions of fire severity classes. These data are produced under the Monitoring Trends in Burn Severity (MTBS) program jointly implemented by the USGS EROS and the USFS GTAC. The MTBS program ascertains the locations of fires based on available fire occurrence information provided by federal and state agencies, and other reliable sources. The MTBS program reserves the right to correct, update or modify geospatial inputs to this map without notification.

* Areas in either the pre-fire or post-fire reflectance imagery containing clouds, snow, shadows, smoke, significantly sized water bodies, missing lines of image data, etc.

0 5.5 11 Miles

Acreage of Burn Severity

Burn Severity	Acres
Unburned to Low	10,012
Low	51,006
Moderate	45,085
High	16,373
Increased Greenness	64
Non-Processing Area Mask*	31
Total	122,573