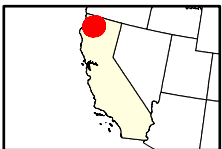
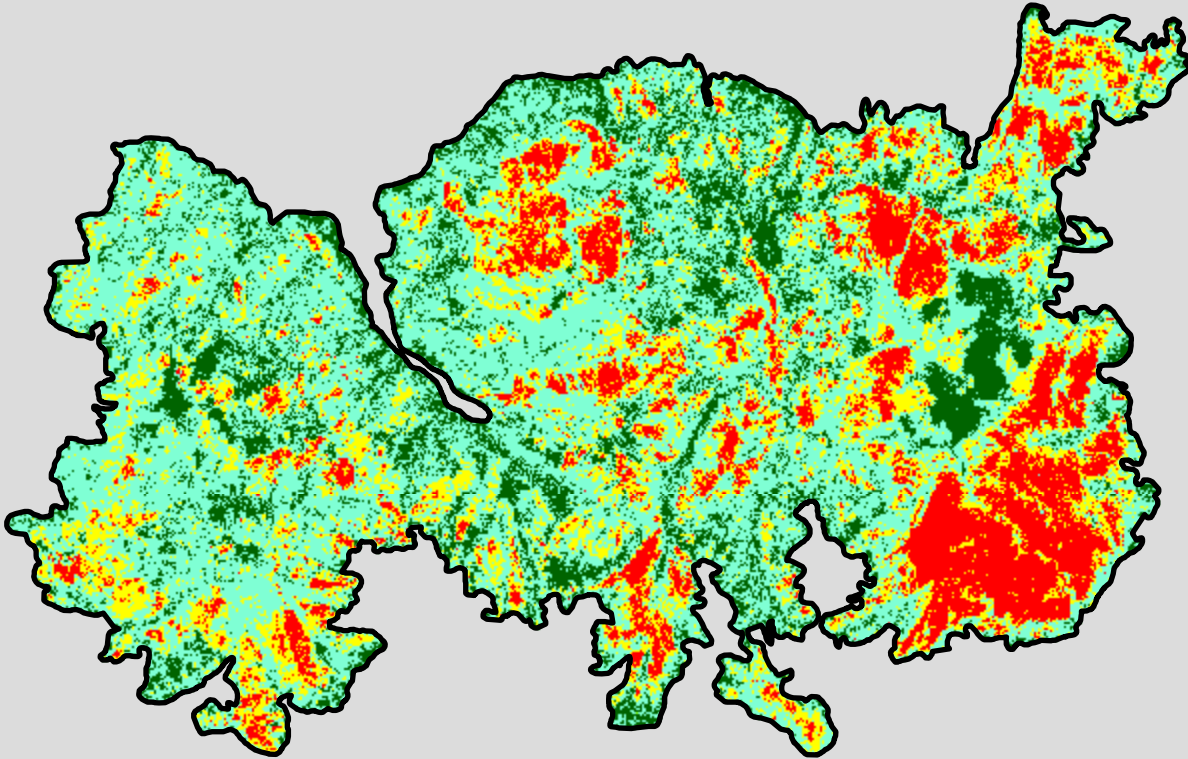
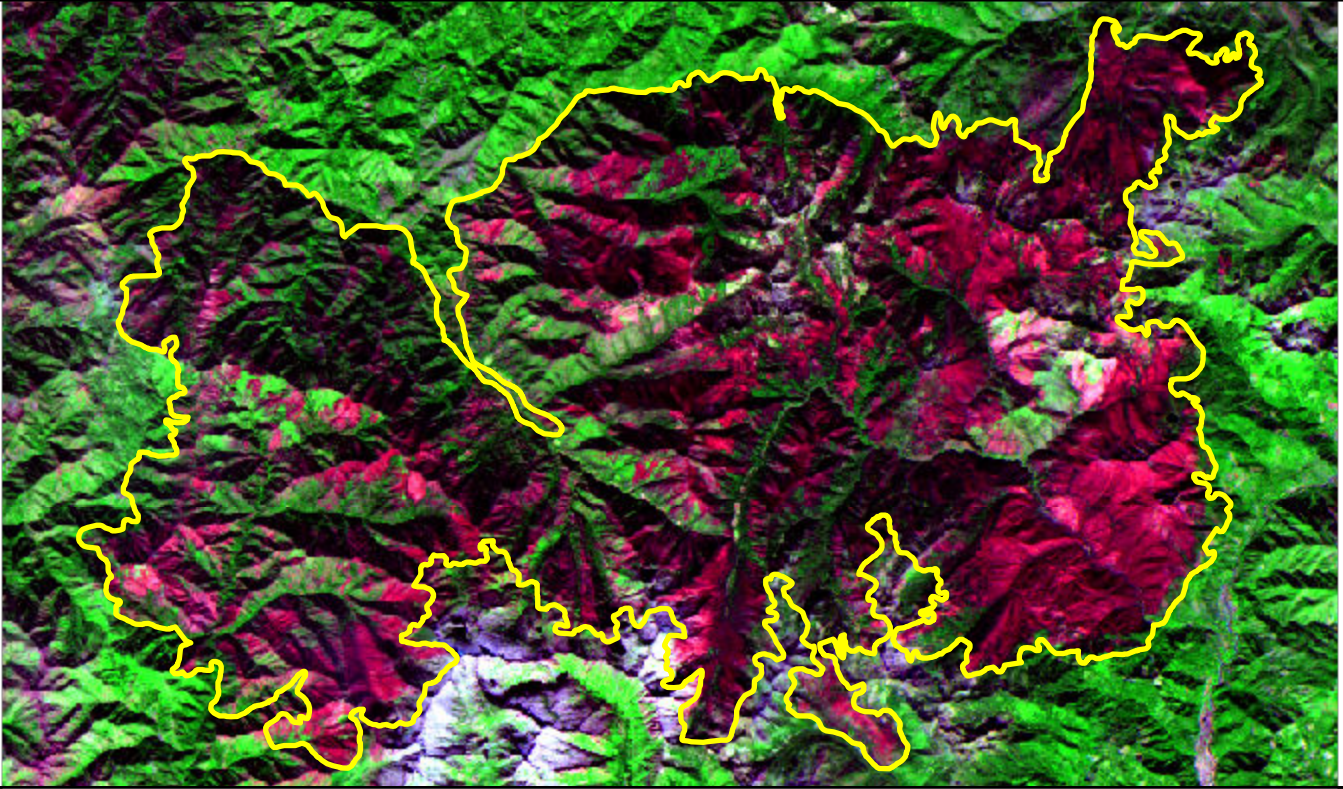


2021 California: HAYPRESS

ca4114212301620210731



Latitude: 41° 07' 15.6"
Longitude: -122° 58' 58.8"
Fire Ignition Date: July 31, 2021
Assessment Type: Initial
Pre-Fire Image Date: October 14, 2020 (S2A)
Post-Fire Image Date: October 14, 2021 (S2B)



This map portrays fire severity for the fire specified in the map title and summarizes proportions of fire severity classes. These data are produced under the Monitoring Trends in Burn Severity (MTBS) program jointly implemented by the USGS EROS and the USFS GTAC. The MTBS program ascertains the locations of fires based on available fire occurrence information provided by federal and state agencies, and other reliable sources. The MTBS program reserves the right to correct, update or modify geospatial inputs to this map without notification.

* Areas in either the pre-fire or post-fire reflectance imagery containing clouds, snow, shadows, smoke, significantly sized water bodies, missing lines of image data, etc.

Acreage of Burn Severity

Burn Severity	Acres
Unburned to Low	35,843
Low	104,721
Moderate	37,899
High	29,627
Increased Greenness	32
Non-Processing Area Mask*	0
Total	208,121

0 6 12 Miles