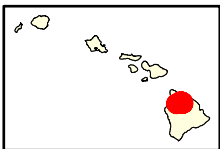
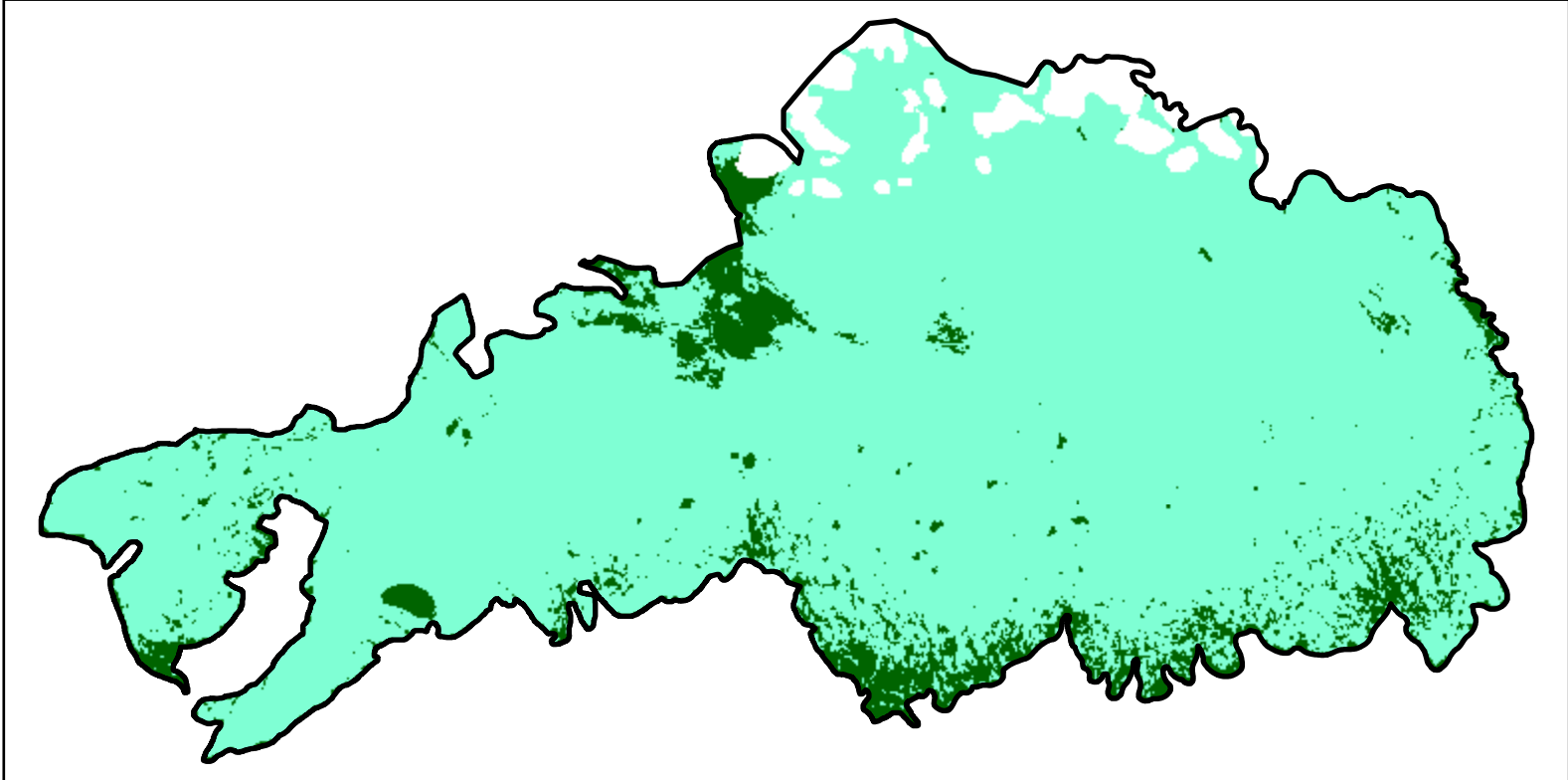
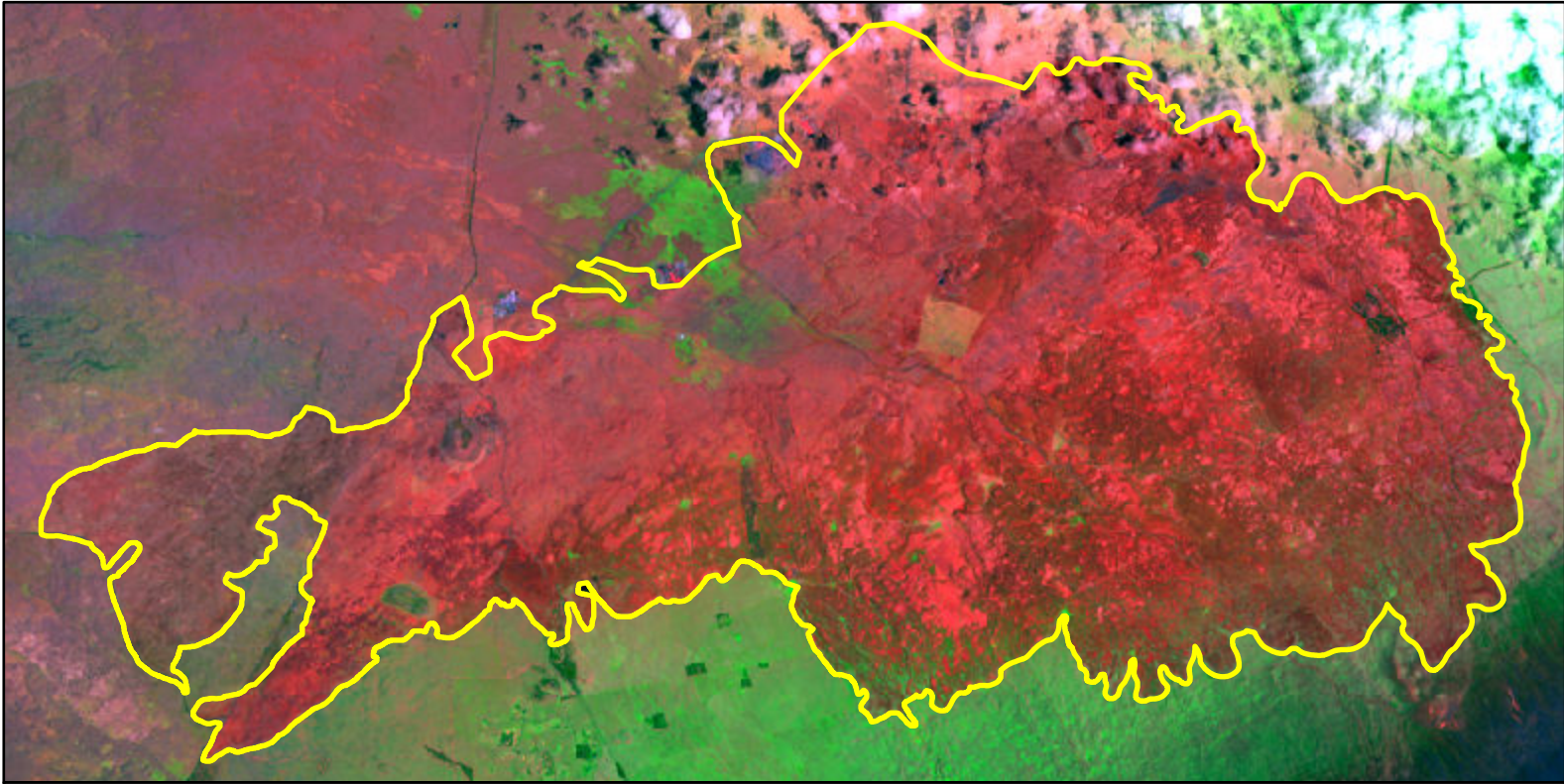


2021 Hawaii: MANA ROAD FIRE

hi1993015557020210730



Latitude: 19° 55' 37.2"
Longitude: -155° 37' 51.6"
Fire Ignition Date: July 30, 2021
Assessment Type: Initial (SS)
Pre-Fire Image Date: N/A
Post-Fire Image Date: September 02, 2021 (L8)



Acreage of Burn Severity

Burn Severity	Acres
Unburned to Low	3,593
Low	36,271
Moderate	0
High	0
Increased Greenness	0
Non-Processing Area Mask*	1,404
Total	41,267

This map portrays fire severity for the fire specified in the map title and summarizes proportions of fire severity classes. These data are produced under the Provisional Initial Assessment (PIA) mapping project jointly implemented by the USGS EROS and the USFS GTAC. The PIA mapping project ascertains the locations of fires based on available fire occurrence information provided by federal and state agencies, and other reliable sources. The PIA mapping project reserves the right to correct, update or modify geospatial inputs to this map without notification.

0 2.5 5 Miles