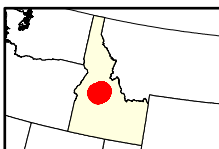
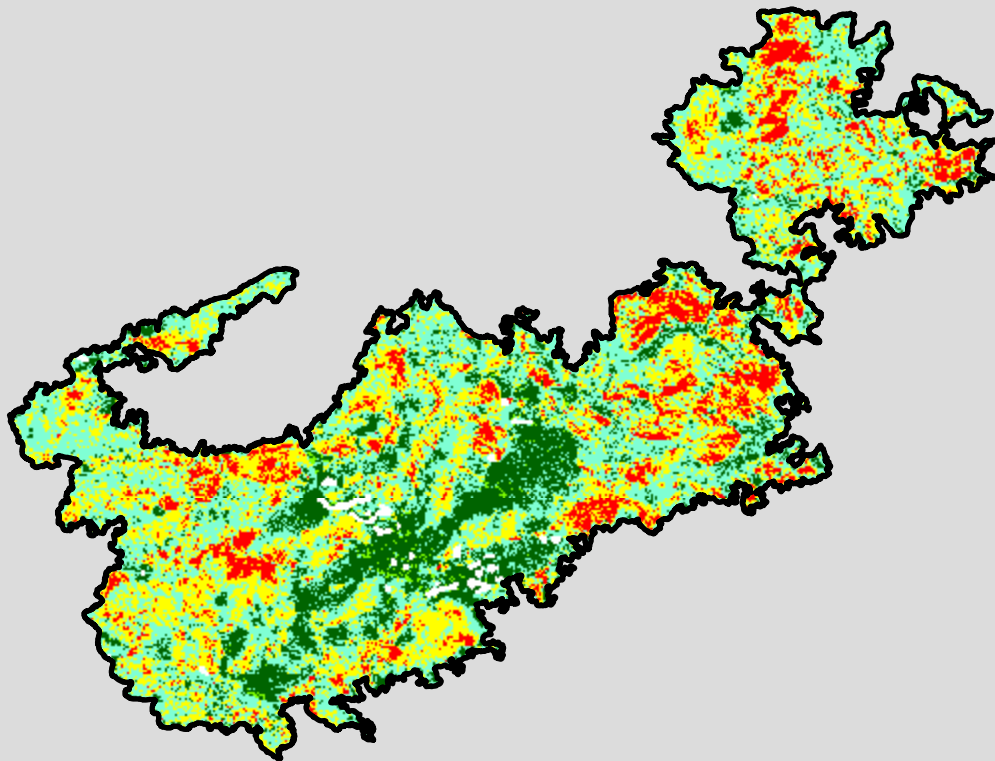
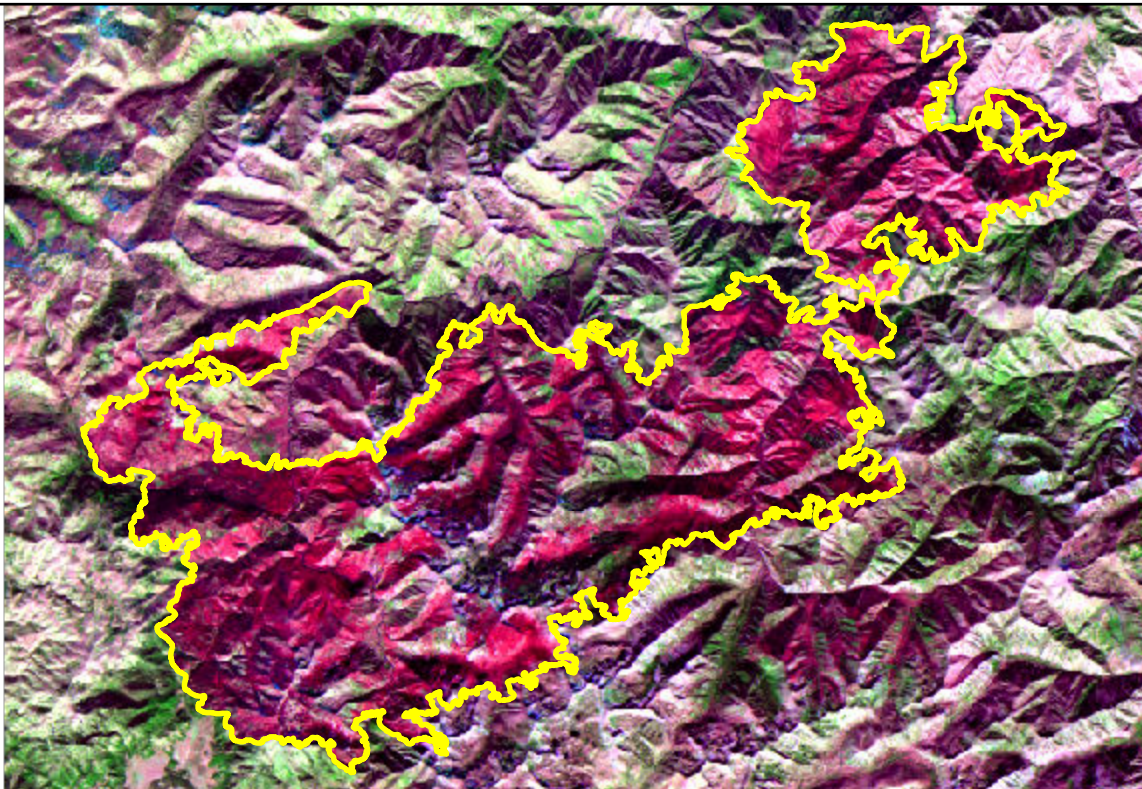


2021 Idaho: BOUNDARY

id4453211532920210810



Latitude: 44° 35' 52.8"
Longitude: -115° 10' 33.6"
Fire Ignition Date: August 10, 2021
Assessment Type: Initial
Pre-Fire Image Date: September 30, 2020 (S2B)
Post-Fire Image Date: September 30, 2021 (S2A)



Acreage of Burn Severity

Burn Severity	Acres
Unburned to Low	15,908
Low	39,065
Moderate	27,105
High	9,933
Increased Greenness	441
Non-Processing Area Mask*	943
Total	93,396

This map portrays fire severity for the fire specified in the map title and summarizes proportions of fire severity classes. These data are produced under the Monitoring Trends in Burn Severity (MTBS) program jointly implemented by the USGS EROS and the USFS GTAC. The MTBS program ascertains the locations of fires based on available fire occurrence information provided by federal and state agencies, and other reliable sources. The MTBS program reserves the right to correct, update or modify geospatial inputs to this map without notification.

* Areas in either the pre-fire or post-fire reflectance imagery containing clouds, snow, shadows, smoke, significantly sized water bodies, missing lines of image data, etc.

0 6 12 Miles