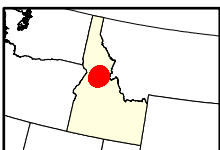
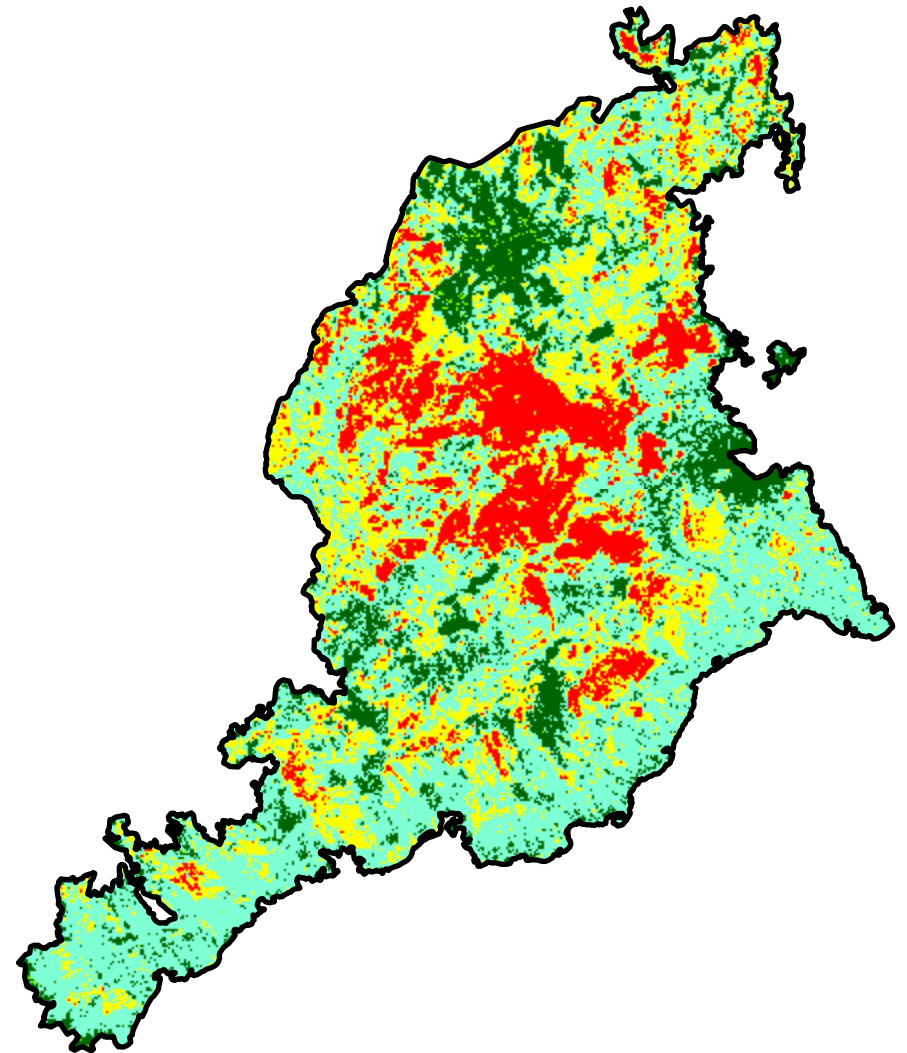
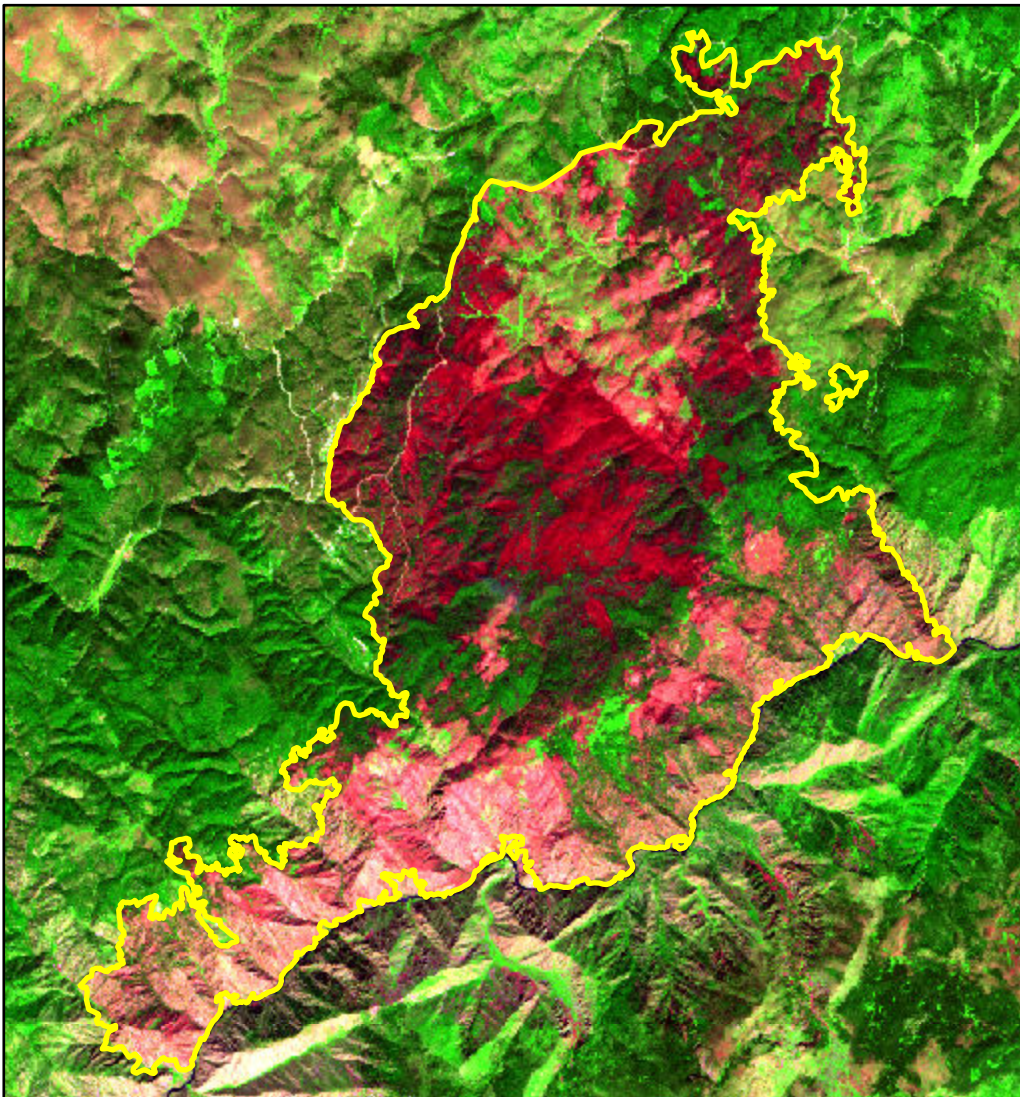


2021 Idaho: DIXIE

id4558511544420210705



Latitude: 45° 32' 09.6"
Longitude: -115° 23' 06.0"
Fire Ignition Date: July 05, 2021
Assessment Type: Initial
Pre-Fire Image Date: September 10, 2020 (S2B)
Post-Fire Image Date: August 24, 2021 (S2A)



Acreage of Burn Severity

Burn Severity	Acres
Unburned to Low	6,709
Low	20,739
Moderate	10,858
High	6,294
Increased Greenness	106
Non-Processing Area Mask*	0
Total	44,705

This map portrays fire severity for the fire specified in the map title and summarizes proportions of fire severity classes. These data are produced under the Provisional Initial Assessment (PIA) mapping project jointly implemented by the USGS EROS and the USFS GTAC. The PIA mapping project ascertains the locations of fires based on available fire occurrence information provided by federal and state agencies, and other reliable sources. The PIA mapping project reserves the right to correct, update or modify geospatial inputs to this map without notification.

0 3.5 7 Miles