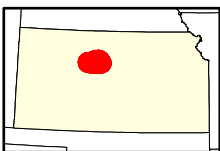
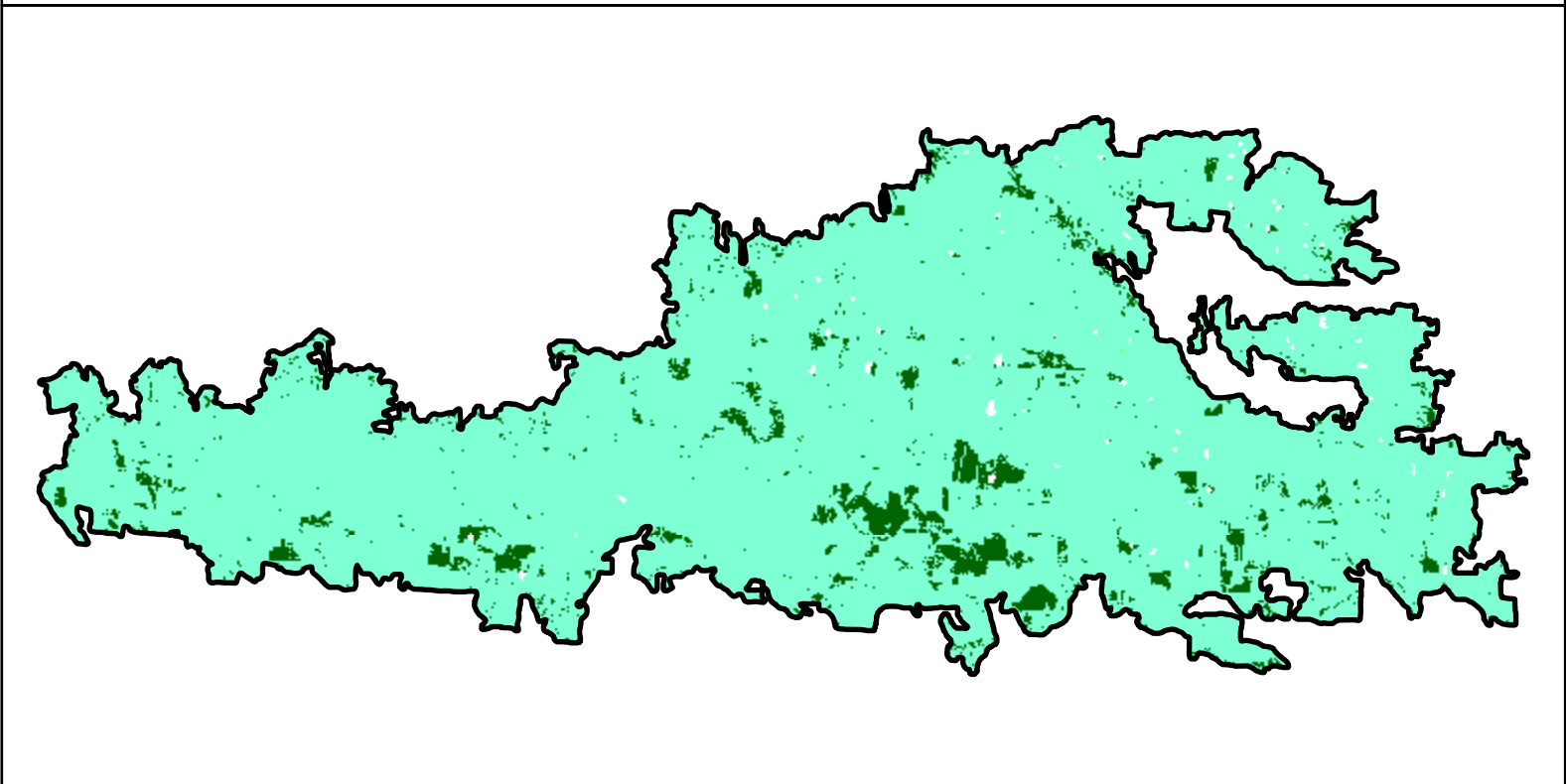
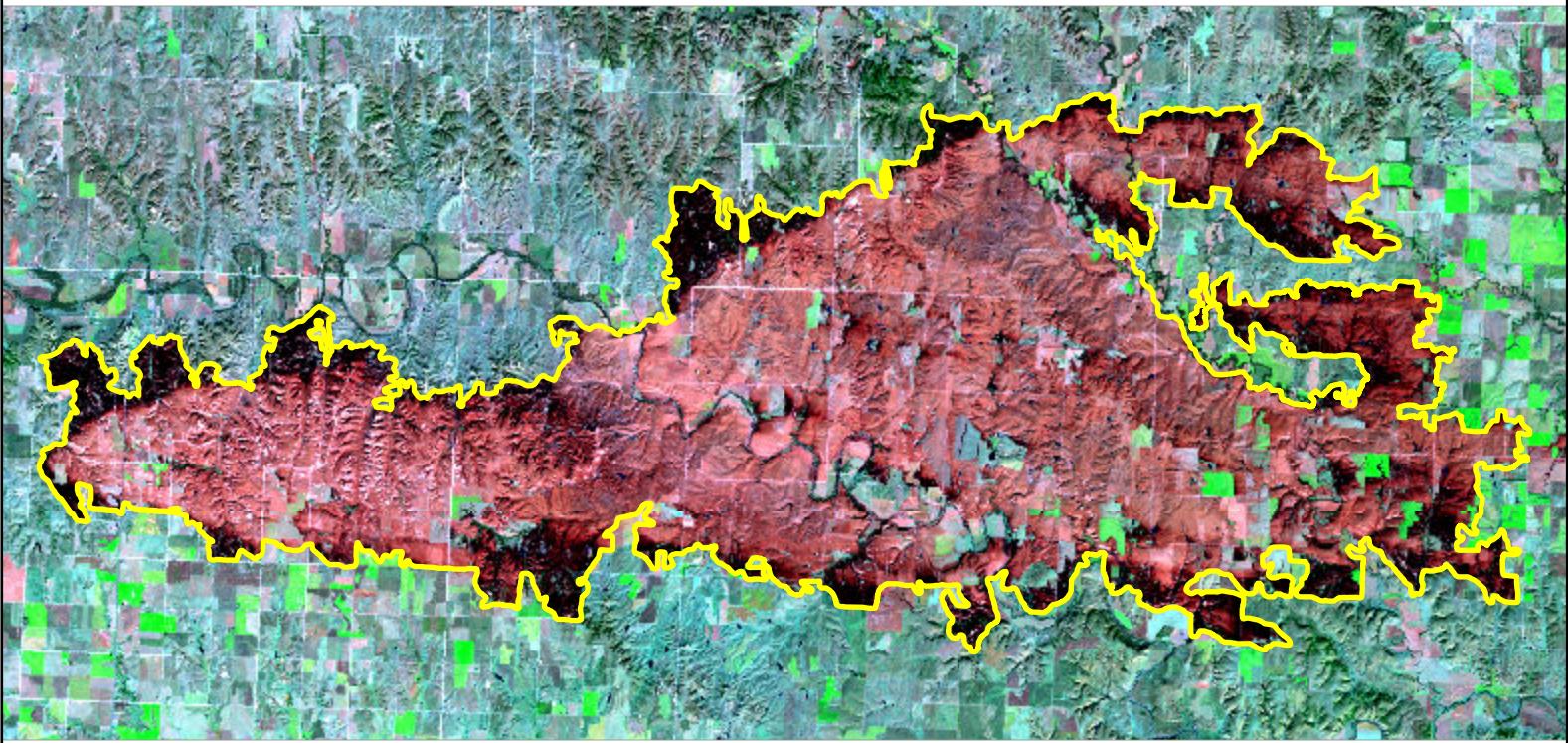


2021 Kansas: FOUR COUNTY

ks3910009890020211215



Latitude: 39° 04' 51.6"
Longitude: -99° 03' 21.6"
Fire Ignition Date: December 15, 2021
Assessment Type: Initial
Pre-Fire Image Date: December 09, 2021 (L8)
Post-Fire Image Date: December 25, 2021 (L8)



This map portrays fire severity for the fire specified in the map title and summarizes proportions of fire severity classes. These data are produced under the Provisional Initial Assessment (PIA) mapping project jointly implemented by the USGS EROS and the USFS GTAC. The PIA mapping project ascertains the locations of fires based on available fire occurrence information provided by federal and state agencies, and other reliable sources. The PIA mapping project reserves the right to correct, update or modify geospatial inputs to this map without notification.

Acreage of Burn Severity

Burn Severity	Acres
Unburned to Low	8,979
Low	113,591
Moderate	0
High	0
Increased Greenness	7
Non-Processing Area Mask*	448
Total	123,025

0 5 10 Miles