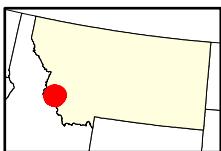
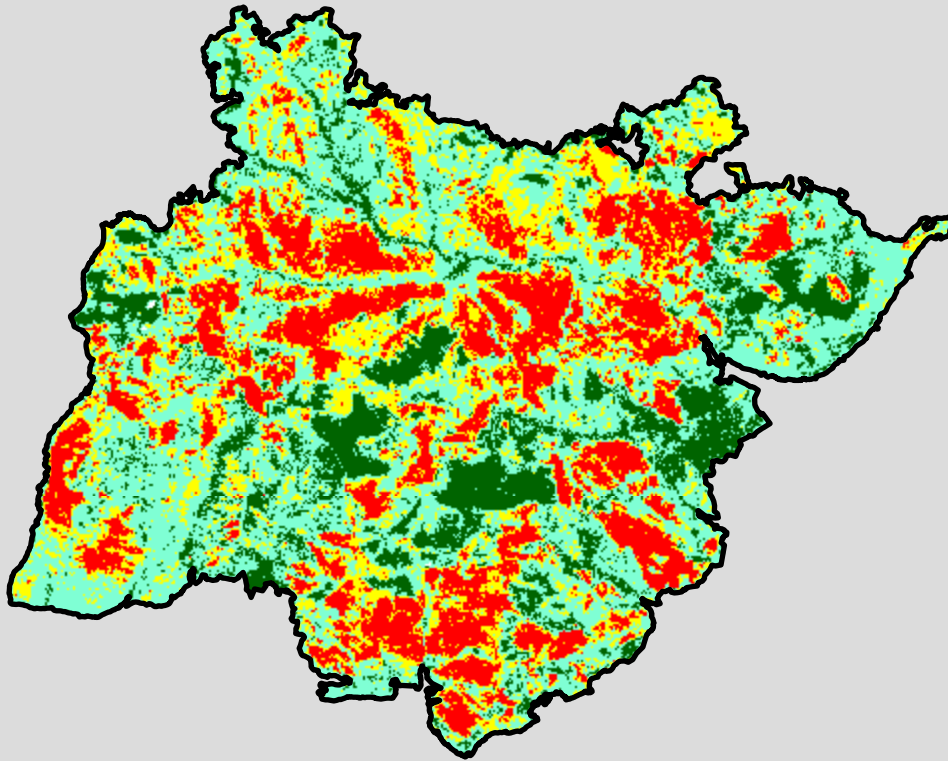
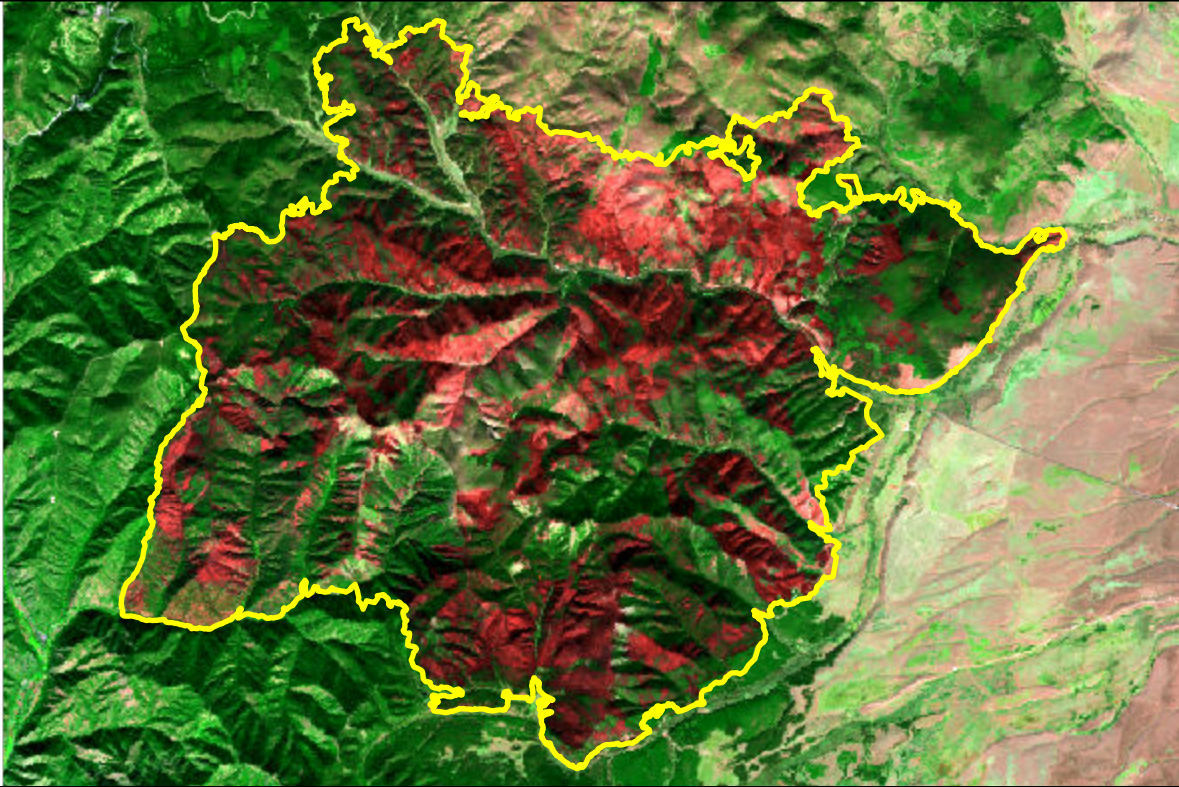


2021 Montana: TRAIL CREEK

mt4568311385420210708



Latitude: 45° 37' 26.4"
Longitude: -113° 45' 57.6"
Fire Ignition Date: July 08, 2021
Assessment Type: Initial
Pre-Fire Image Date: September 30, 2020 (L8)
Post-Fire Image Date: October 03, 2021 (L8)



This map portrays fire severity for the fire specified in the map title and summarizes proportions of fire severity classes. These data are produced under the Monitoring Trends in Burn Severity (MTBS) program jointly implemented by the USGS EROS and the USFS GTAC. The MTBS program ascertains the locations of fires based on available fire occurrence information provided by federal and state agencies, and other reliable sources. The MTBS program reserves the right to correct, update or modify geospatial inputs to this map without notification.

* Areas in either the pre-fire or post-fire reflectance imagery containing clouds, snow, shadows, smoke, significantly sized water bodies, missing lines of image data, etc.

0 4 8 Miles

Acreage of Burn Severity

| Burn Severity | Acres |
|---------------------------|---------------|
| Unburned to Low | 9,753 |
| Low | 26,086 |
| Moderate | 12,993 |
| High | 13,317 |
| Increased Greenness | 0 |
| Non-Processing Area Mask* | 12 |
| Total | 62,161 |