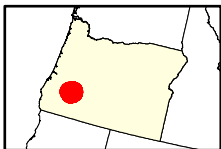
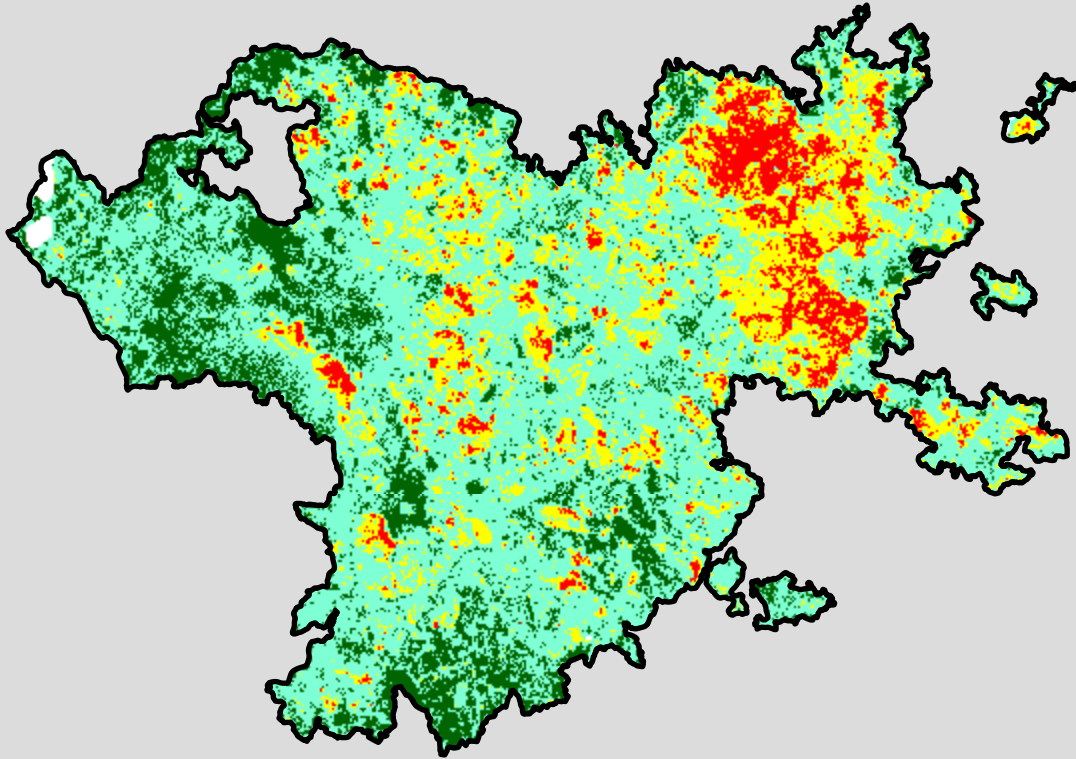


2021 Oregon: SMITH

or4310412287520210802



Latitude: 43° 05' 34.8"
Longitude: -122° 46' 48.0"
Fire Ignition Date: August 02, 2021
Assessment Type: Initial
Pre-Fire Image Date: October 04, 2020 (S2A)
Post-Fire Image Date: October 09, 2021 (S2A)



This map portrays fire severity for the fire specified in the map title and summarizes proportions of fire severity classes. These data are produced under the Monitoring Trends in Burn Severity (MTBS) program jointly implemented by the USGS EROS and the USFS GTAC. The MTBS program ascertains the locations of fires based on available fire occurrence information provided by federal and state agencies, and other reliable sources. The MTBS program reserves the right to correct, update or modify geospatial inputs to this map without notification.

* Areas in either the pre-fire or post-fire reflectance imagery containing clouds, snow, shadows, smoke, significantly sized water bodies, missing lines of image data, etc.

0 3.5 7 Miles

Acreage of Burn Severity

Burn Severity	Acres
Unburned to Low	9,307
Low	28,269
Moderate	8,902
High	3,066
Increased Greenness	6
Non-Processing Area Mask*	188
Total	49,738