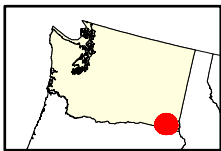
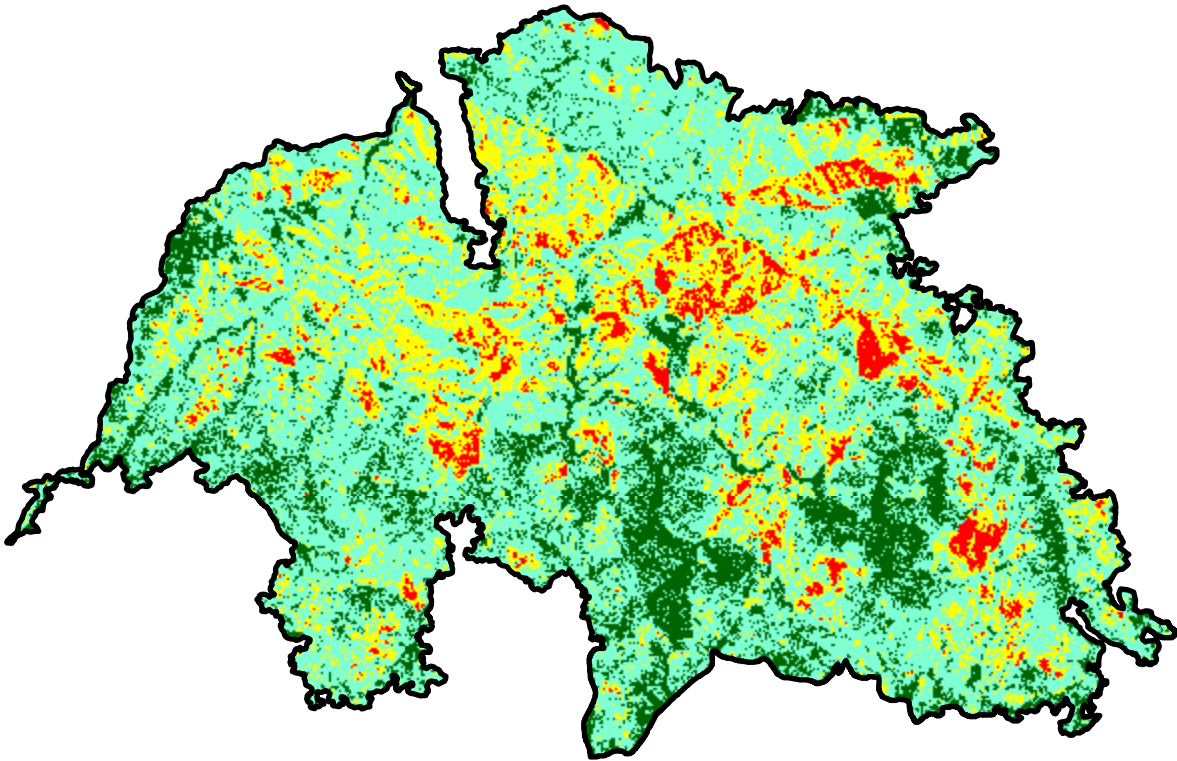
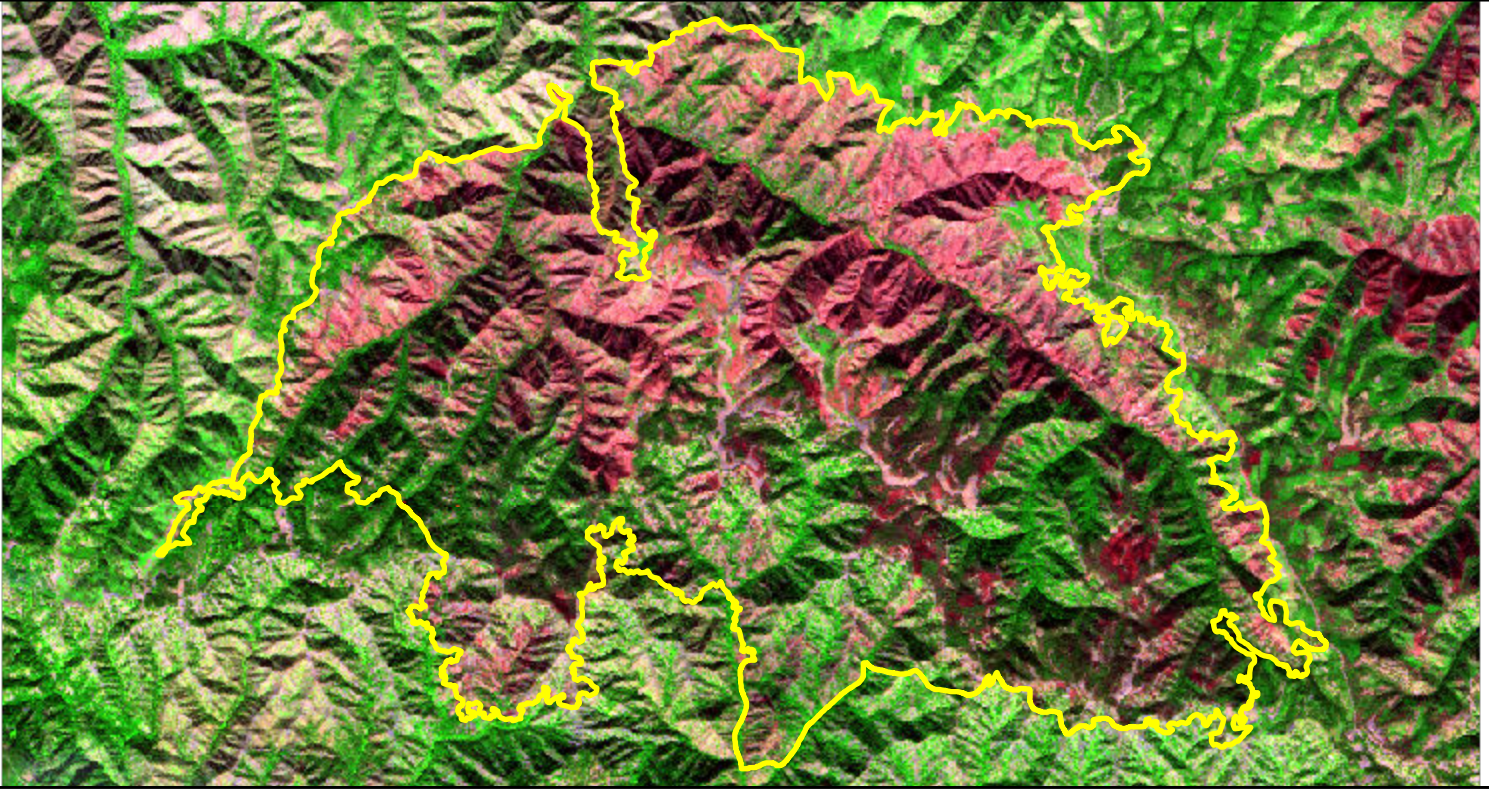


2021 Washington: GREEN RIDGE

wa4613511773720210707



Latitude: 46° 09' 21.6"
Longitude: -117° 38' 24.0"
Fire Ignition Date: July 07, 2021
Assessment Type: Initial
Pre-Fire Image Date: October 01, 2020 (S2A)
Post-Fire Image Date: October 03, 2021 (S2A)



Acreage of Burn Severity

Burn Severity	Acres
Unburned to Low	8,283
Low	25,093
Moderate	9,085
High	2,131
Increased Greenness	0
Non-Processing Area Mask*	0
Total	44,591

This map portrays fire severity for the fire specified in the map title and summarizes proportions of fire severity classes. These data are produced under the Provisional Initial Assessment (PIA) mapping project jointly implemented by the USGS EROS and the USFS GTAC. The PIA mapping project ascertains the locations of fires based on available fire occurrence information provided by federal and state agencies, and other reliable sources. The PIA mapping project reserves the right to correct, update or modify geospatial inputs to this map without notification.

0 3 6 Miles