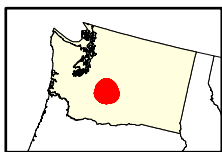
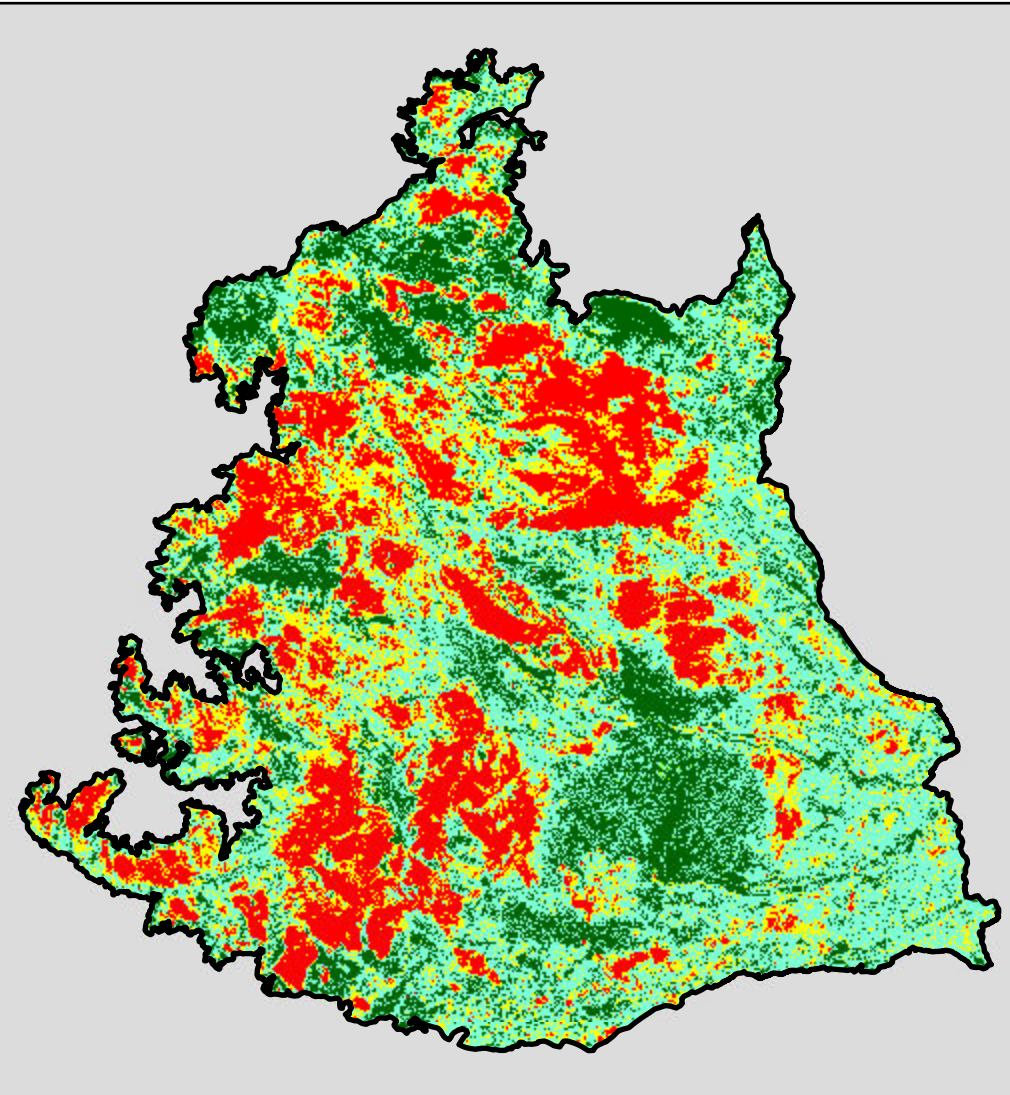
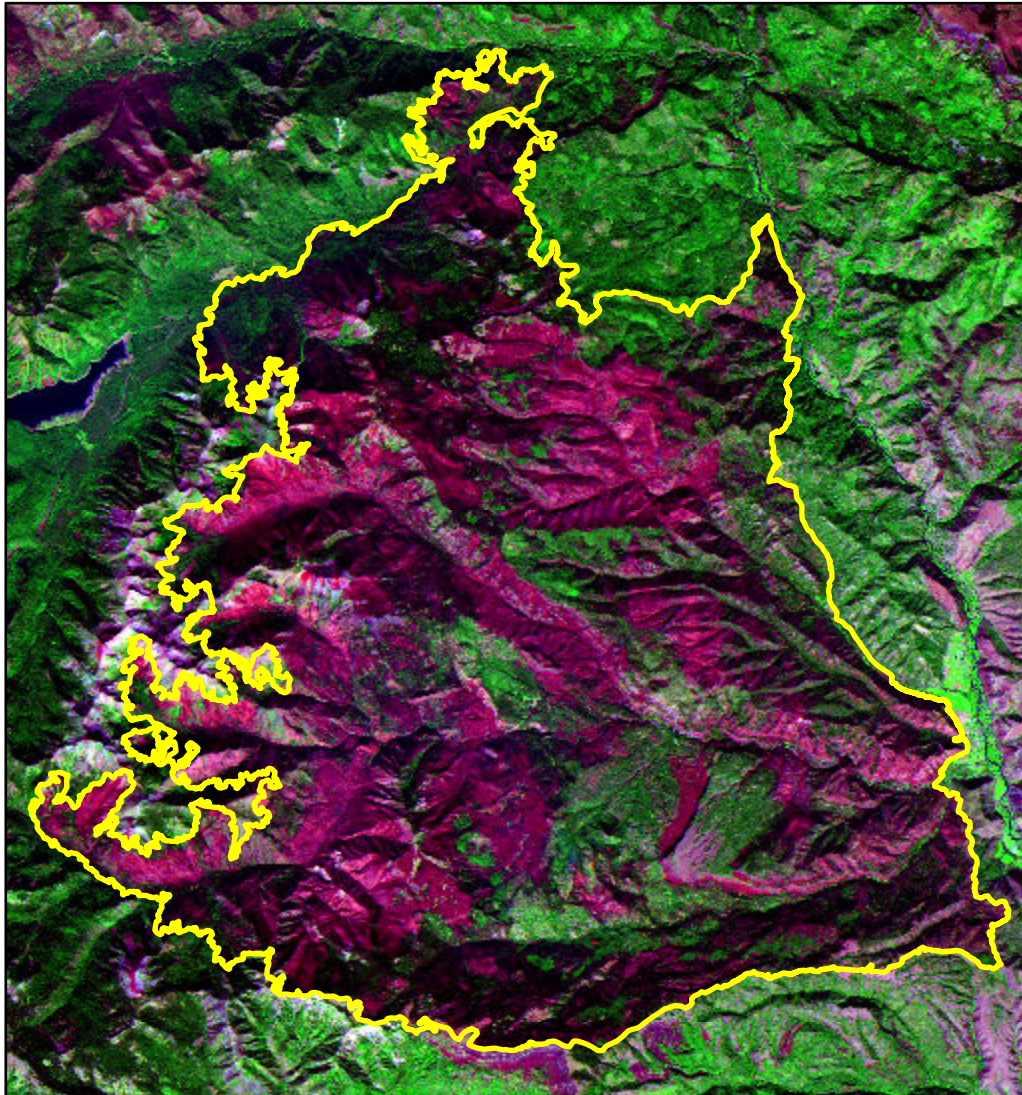


2021 Washington: SCHNEIDER SPRINGS

wa4684012114620210804



Latitude: 46° 50' 31.2"
Longitude: -121° 05' 60.0"
Fire Ignition Date: August 04, 2021
Assessment Type: Initial
Pre-Fire Image Date: September 29, 2020 (S2B)
Post-Fire Image Date: September 24, 2021 (S2B)



This map portrays fire severity for the fire specified in the map title and summarizes proportions of fire severity classes. These data are produced under the Monitoring Trends in Burn Severity (MTBS) program jointly implemented by the USGS EROS and the USFS GTAC. The MTBS program ascertains the locations of fires based on available fire occurrence information provided by federal and state agencies, and other reliable sources. The MTBS program reserves the right to correct, update or modify geospatial inputs to this map without notification.

* Areas in either the pre-fire or post-fire reflectance imagery containing clouds, snow, shadows, smoke, significantly sized water bodies, missing lines of image data, etc.

0 4.5 9
Miles

Acreage of Burn Severity

Burn Severity	Acres
Unburned to Low	23,396
Low	44,040
Moderate	21,170
High	24,928
Increased Greenness	97
Non-Processing Area Mask*	0
Total	113,632