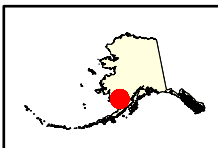
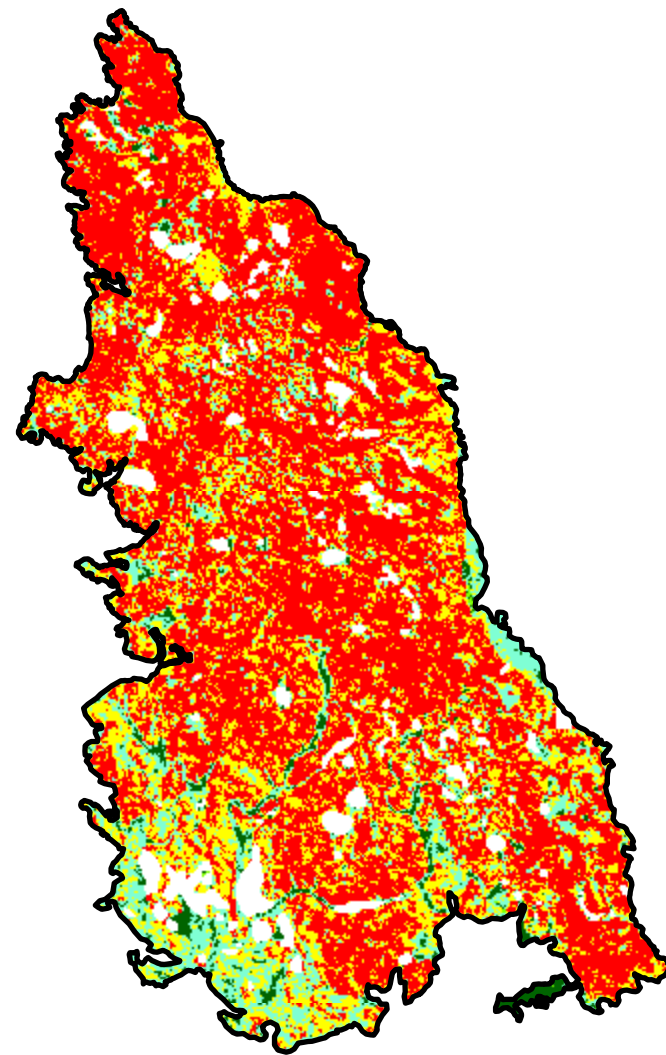
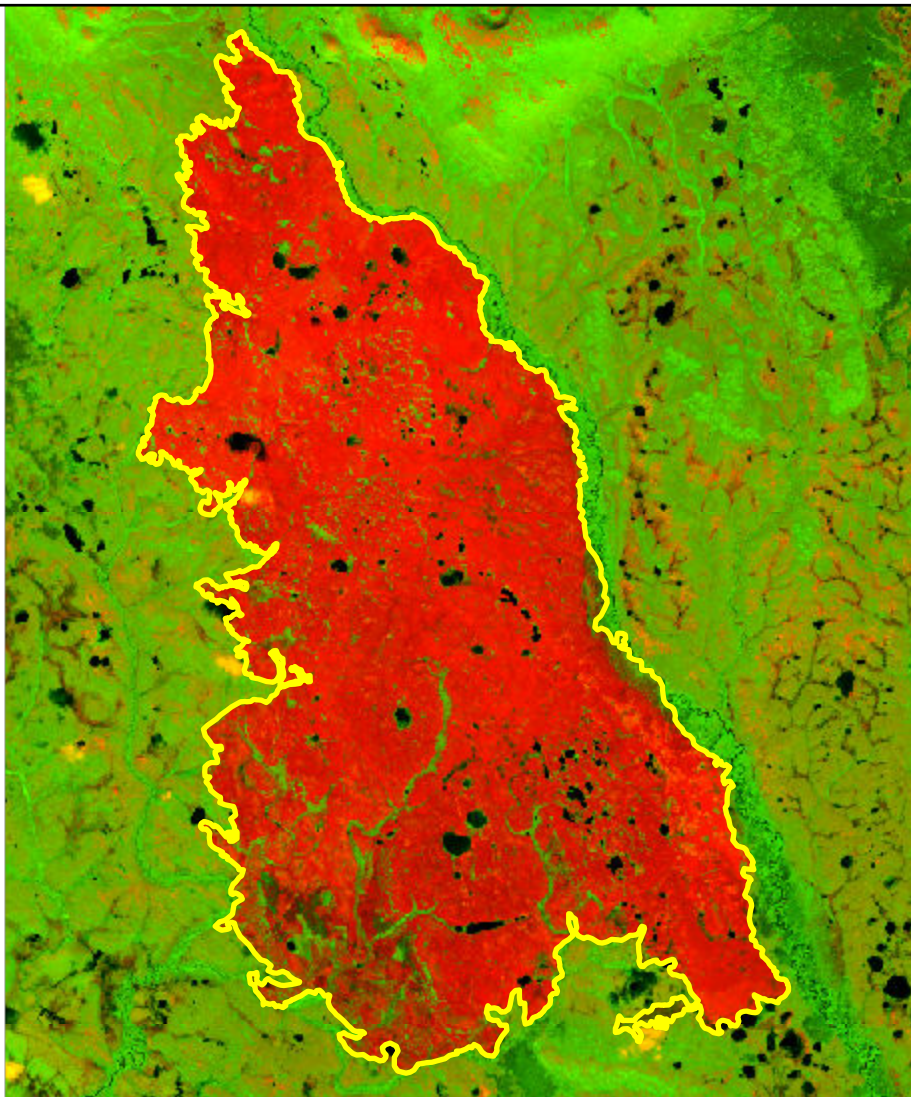


2022 Alaska: IOWITHLA RIVER

ak5920615809420220609



Latitude: 59° 11' 34.8"
Longitude: -158° 07' 12.0"
Fire Ignition Date: June 09, 2022
Assessment Type: Initial
Pre-Fire Image Date: July 15, 2020 (S2B)
Post-Fire Image Date: July 27, 2022 (S2A)



This map portrays fire severity for the fire specified in the map title and summarizes proportions of fire severity classes. These data are produced under the Provisional Initial Assessment (PIA) mapping project jointly implemented by the USGS EROS and the USFS GTAC. The PIA mapping project ascertains the locations of fires based on available fire occurrence information provided by federal and state agencies, and other reliable sources. The PIA mapping project reserves the right to correct, update or modify geospatial inputs to this map without notification.

0 3.5 7 Miles

Acreage of Burn Severity

Burn Severity	Acres
Unburned to Low	1,259
Low	5,333
Moderate	10,753
High	23,603
Increased Greenness	23
Non-Processing Area Mask*	2,434
Total	43,405