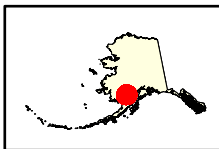
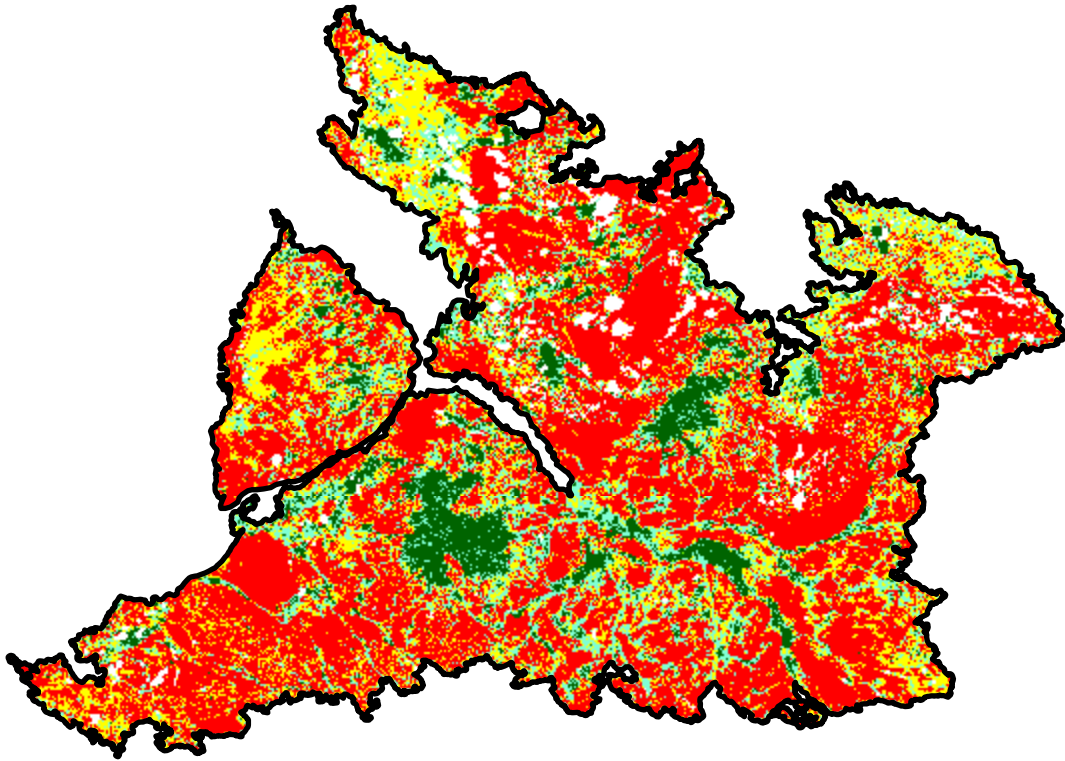
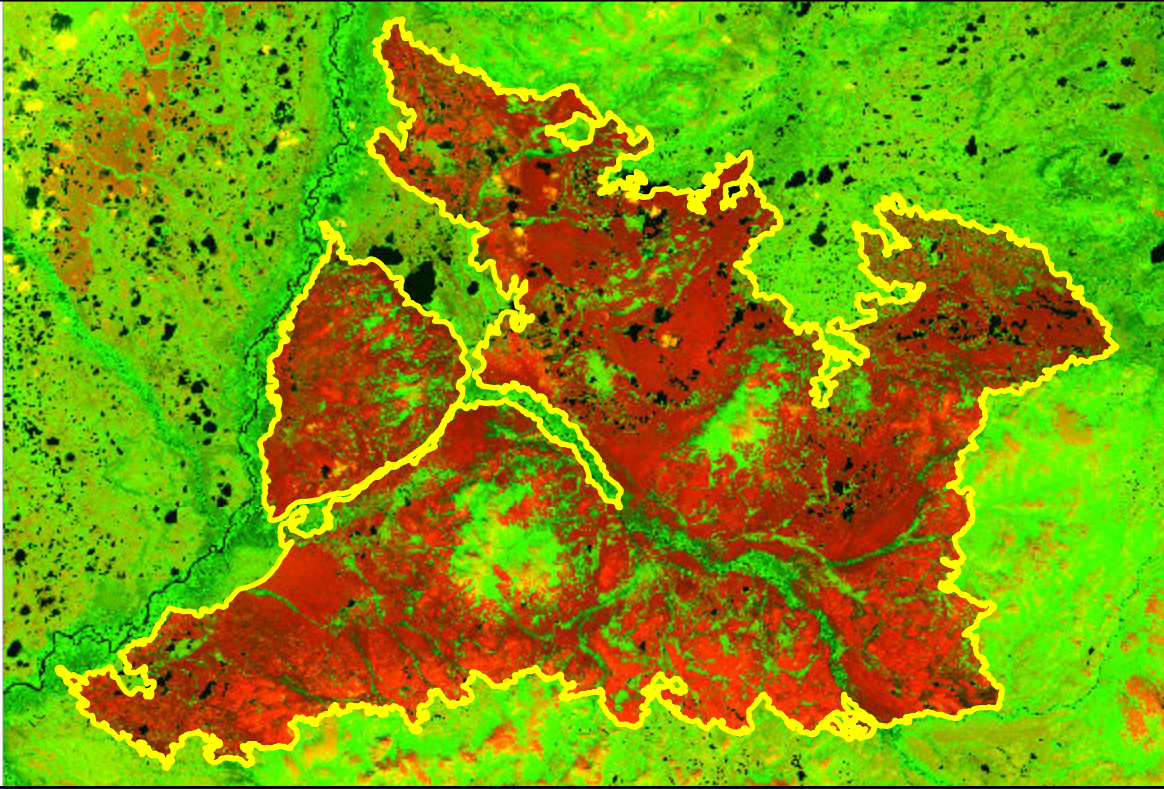


2022 Alaska: KOKTULI RIVER

ak5989515609120220609



Latitude: 59° 59' 38.4"
Longitude: -156° 05' 13.2"
Fire Ignition Date: June 09, 2022
Assessment Type: Initial
Pre-Fire Image Date: August 03, 2021 (S2B)
Post-Fire Image Date: July 27, 2022 (S2A)



Acreage of Burn Severity

Burn Severity	Acres
Unburned to Low	25,540
Low	47,175
Moderate	61,629
High	151,258
Increased Greenness	41
Non-Processing Area Mask*	11,032
Total	296,674

This map portrays fire severity for the fire specified in the map title and summarizes proportions of fire severity classes. These data are produced under the Provisional Initial Assessment (PIA) mapping project jointly implemented by the USGS EROS and the USFS GTAC. The PIA mapping project ascertains the locations of fires based on available fire occurrence information provided by federal and state agencies, and other reliable sources. The PIA mapping project reserves the right to correct, update or modify geospatial inputs to this map without notification.

0 8.5 17 Miles