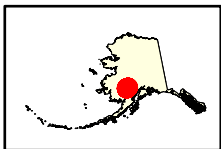
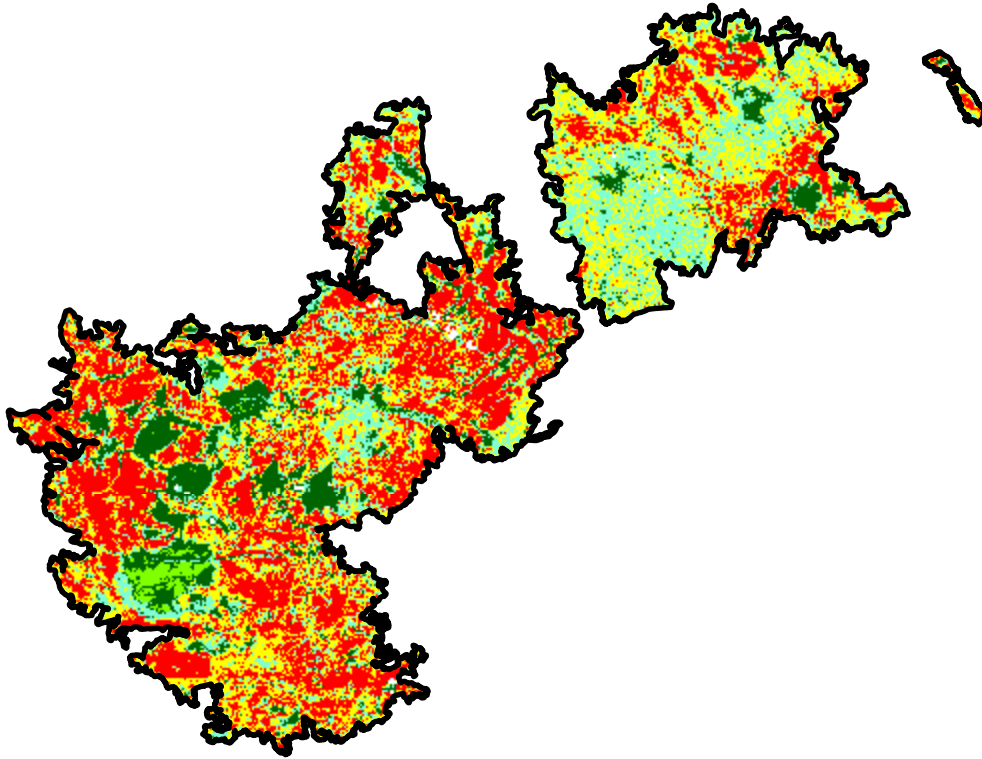
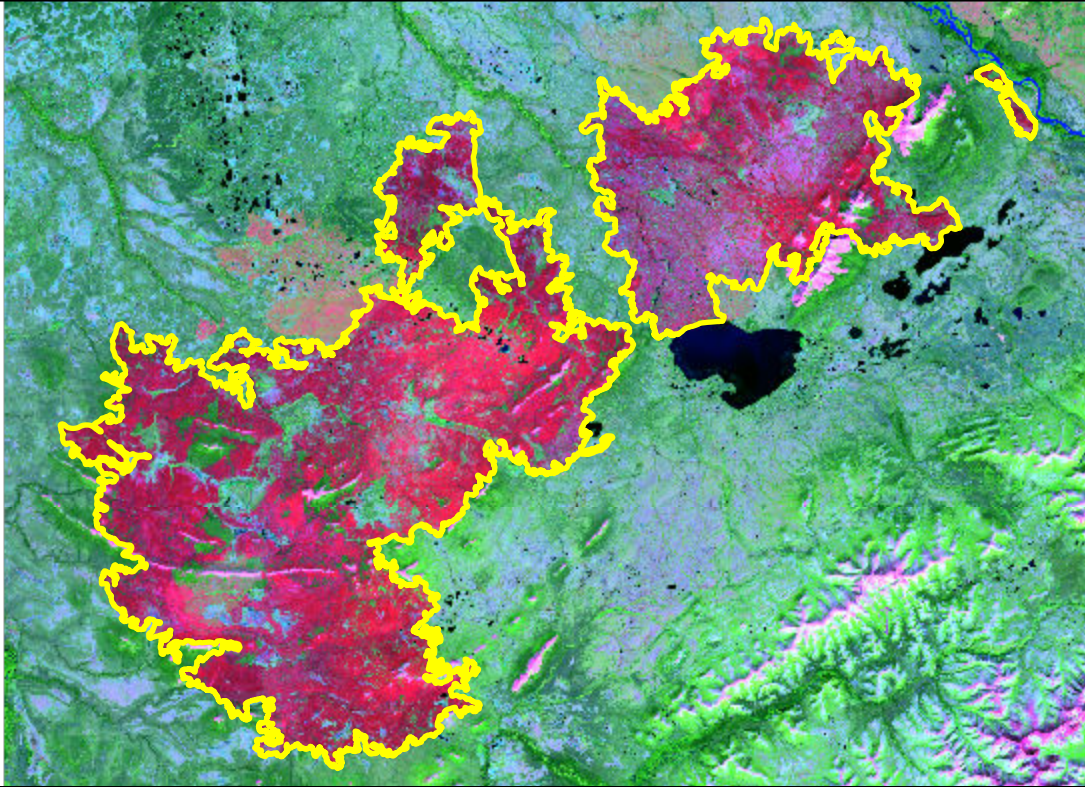


2022 Alaska: DOOR MOUNTAIN

ak6116315608620220609



Latitude: 61° 12' 10.8"
Longitude: -155° 55' 40.8"
Fire Ignition Date: June 09, 2022
Assessment Type: Initial
Pre-Fire Image Date: September 05, 2020 (L8)
Post-Fire Image Date: August 10, 2022 (L8)



Acreage of Burn Severity

Burn Severity	Acres
Unburned to Low	19,477
Low	38,097
Moderate	53,381
High	55,039
Increased Greenness	1,588
Non-Processing Area Mask*	525
Total	168,108

This map portrays fire severity for the fire specified in the map title and summarizes proportions of fire severity classes. These data are produced under the Provisional Initial Assessment (PIA) mapping project jointly implemented by the USGS EROS and the USFS GTAC. The PIA mapping project ascertains the locations of fires based on available fire occurrence information provided by federal and state agencies, and other reliable sources. The PIA mapping project reserves the right to correct, update or modify geospatial inputs to this map without notification.

0 8.5 17 Miles