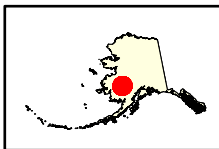
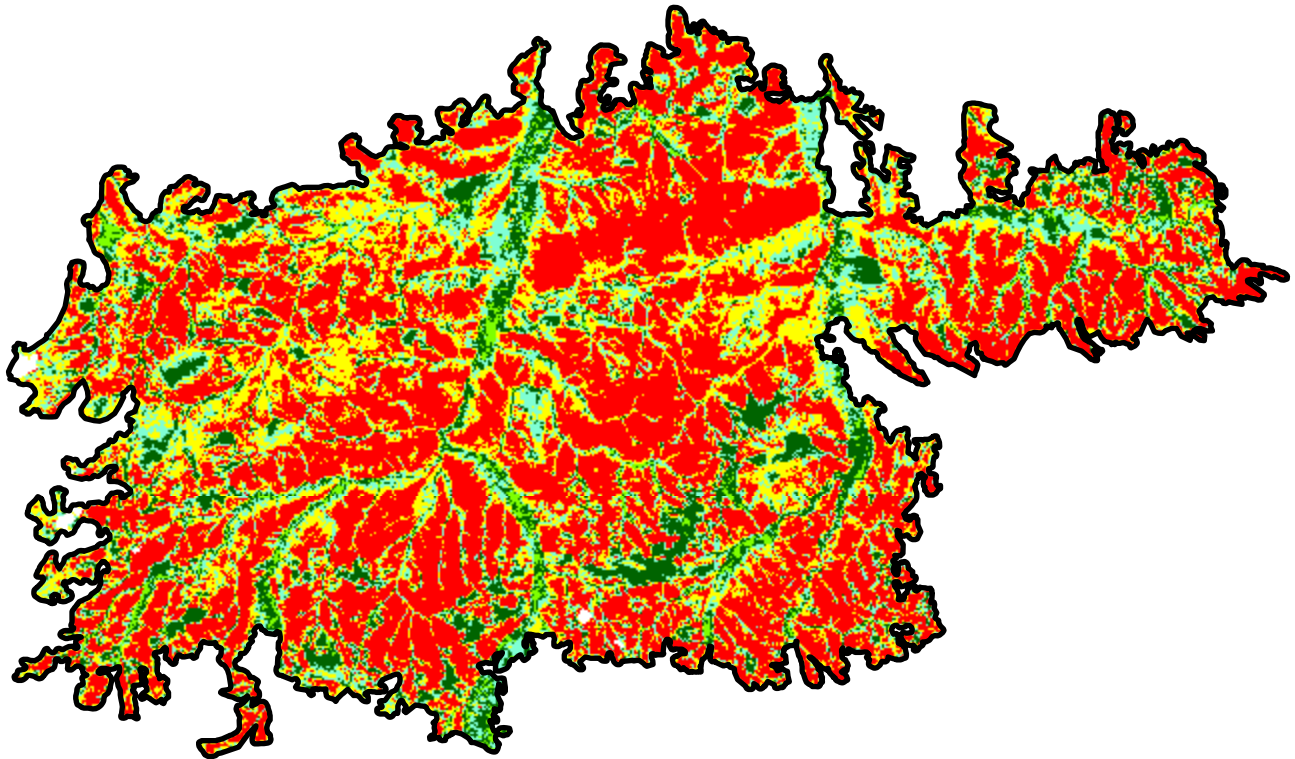
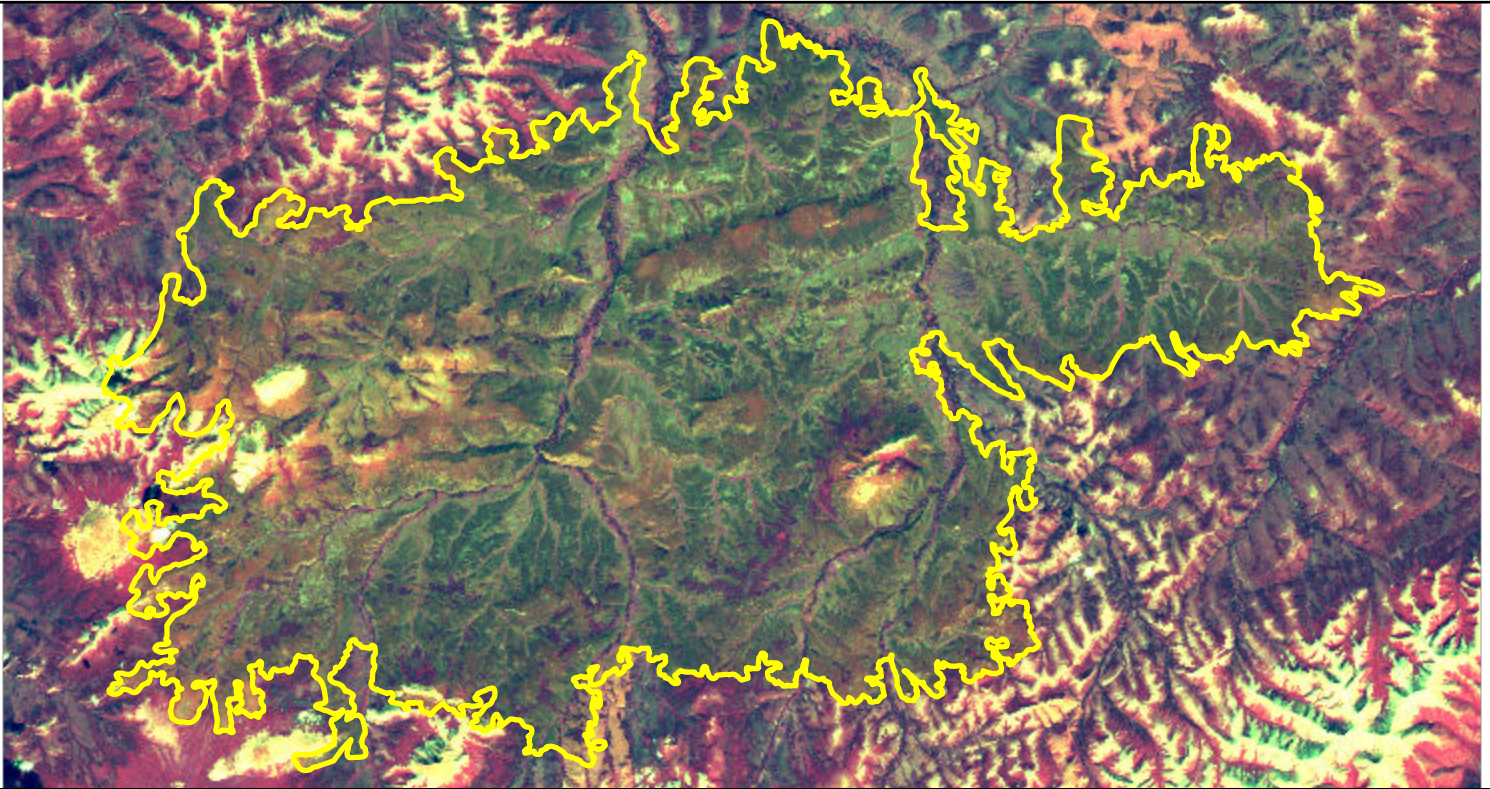


# 2022 Alaska: AGHALUK MOUNTAIN

ak6157015800620220606



Latitude: 61° 33' 10.8"  
Longitude: -157° 47' 34.8"  
Fire Ignition Date: June 06, 2022  
Assessment Type: Initial  
Pre-Fire Image Date: September 12, 2020 (L8)  
Post-Fire Image Date: August 09, 2022 (L9)



## Acreage of Burn Severity

Burn Severity	Acres
Unburned to Low	13,502
Low	18,076
Moderate	26,451
High	55,476
Increased Greenness	2,032
Non-Processing Area Mask*	245
<b>Total</b>	<b>115,782</b>

This map portrays fire severity for the fire specified in the map title and summarizes proportions of fire severity classes. These data are produced under the Provisional Initial Assessment (PIA) mapping project jointly implemented by the USGS EROS and the USFS GTAC. The PIA mapping project ascertains the locations of fires based on available fire occurrence information provided by federal and state agencies, and other reliable sources. The PIA mapping project reserves the right to correct, update or modify geospatial inputs to this map without notification.

0 4.5 9 Miles