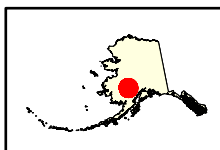
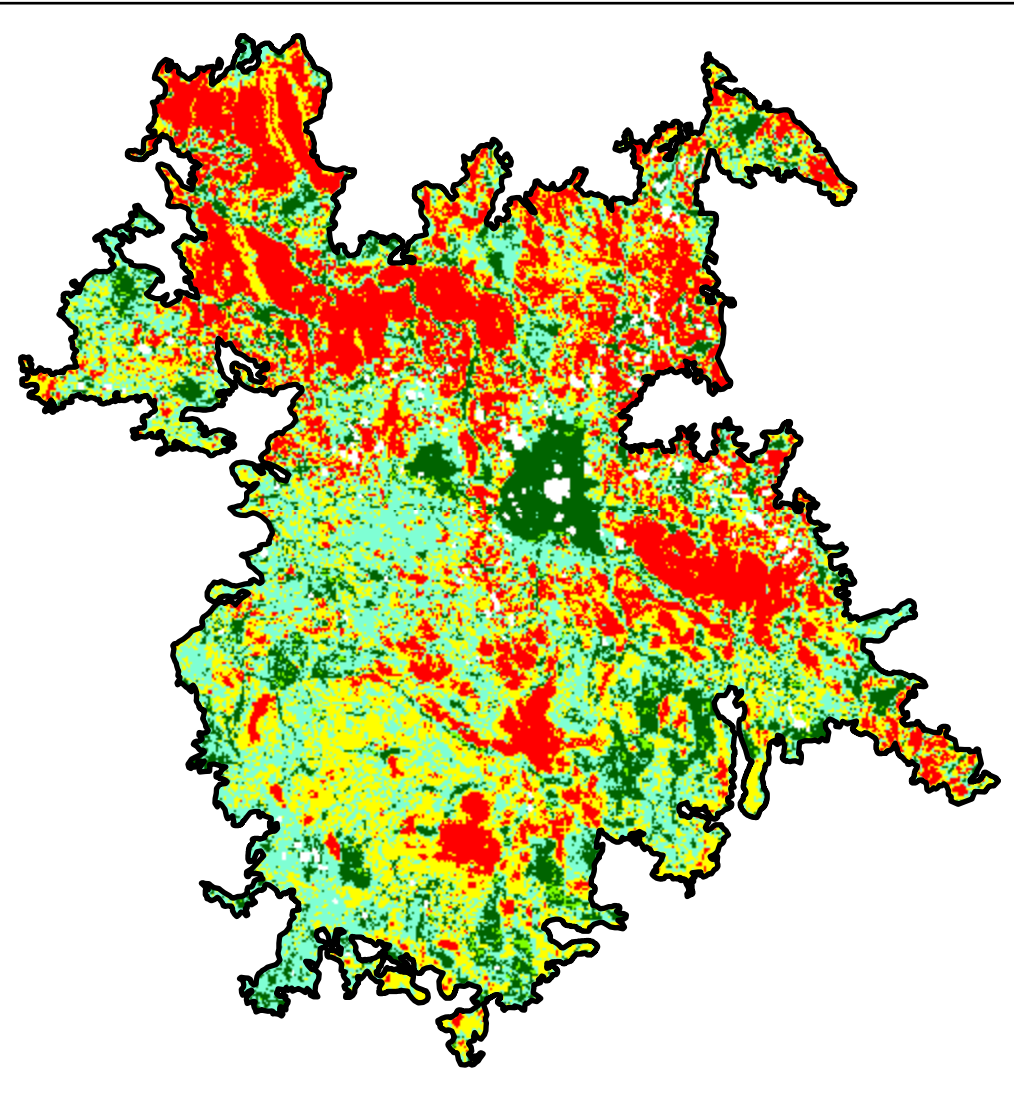
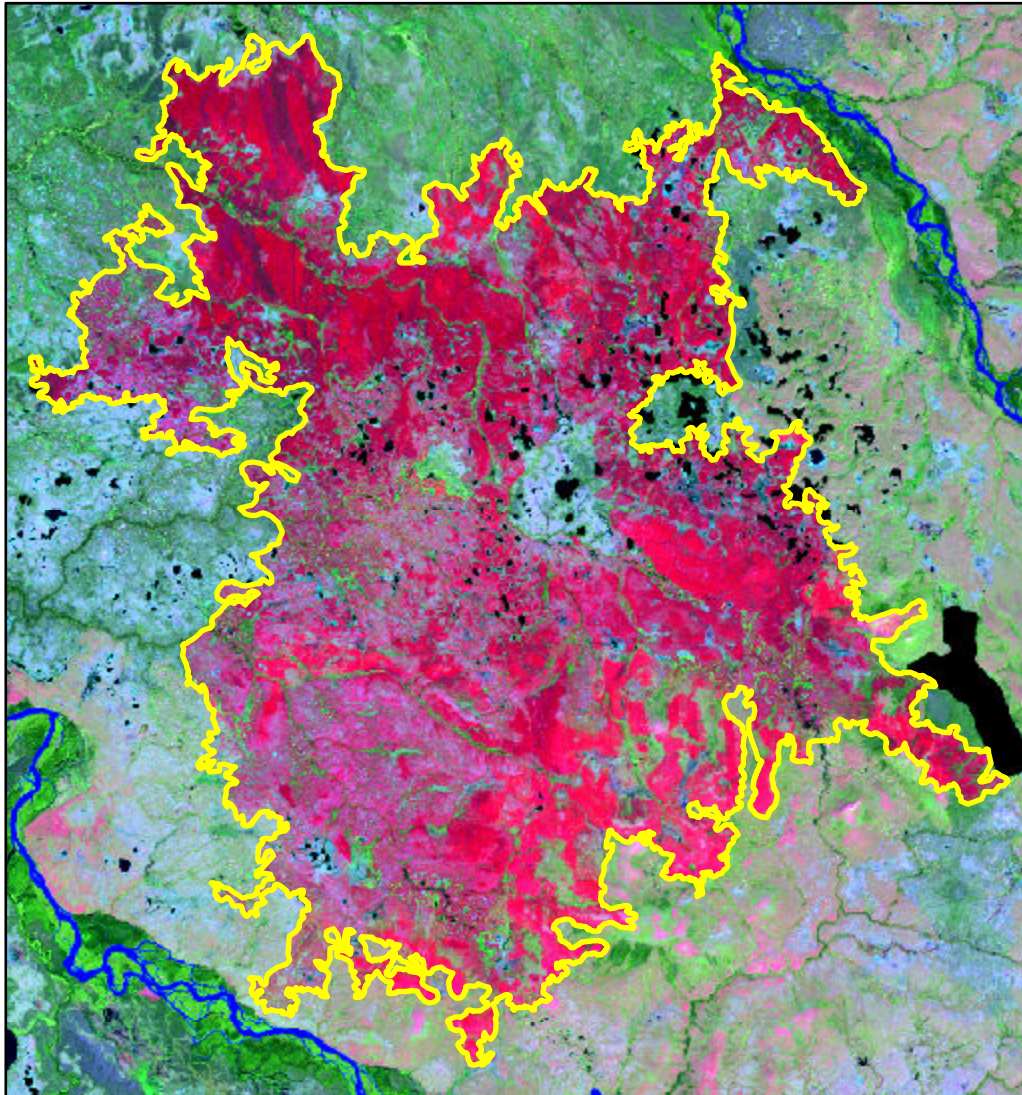


2022 Alaska: STONY RIVER

ak6157915597520220606



Latitude: 61° 34' 33.6"
Longitude: -155° 53' 06.0"
Fire Ignition Date: June 06, 2022
Assessment Type: Initial
Pre-Fire Image Date: September 05, 2020 (L8)
Post-Fire Image Date: August 10, 2022 (L8)



This map portrays fire severity for the fire specified in the map title and summarizes proportions of fire severity classes. These data are produced under the Provisional Initial Assessment (PIA) mapping project jointly implemented by the USGS EROS and the USFS GTAC. The PIA mapping project ascertains the locations of fires based on available fire occurrence information provided by federal and state agencies, and other reliable sources. The PIA mapping project reserves the right to correct, update or modify geospatial inputs to this map without notification.

0 4 8 Miles

Acreage of Burn Severity

Burn Severity	Acres
Unburned to Low	12,064
Low	24,213
Moderate	22,388
High	20,156
Increased Greenness	612
Non-Processing Area Mask*	1,400
Total	80,833