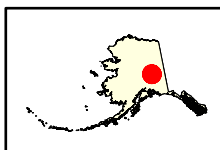
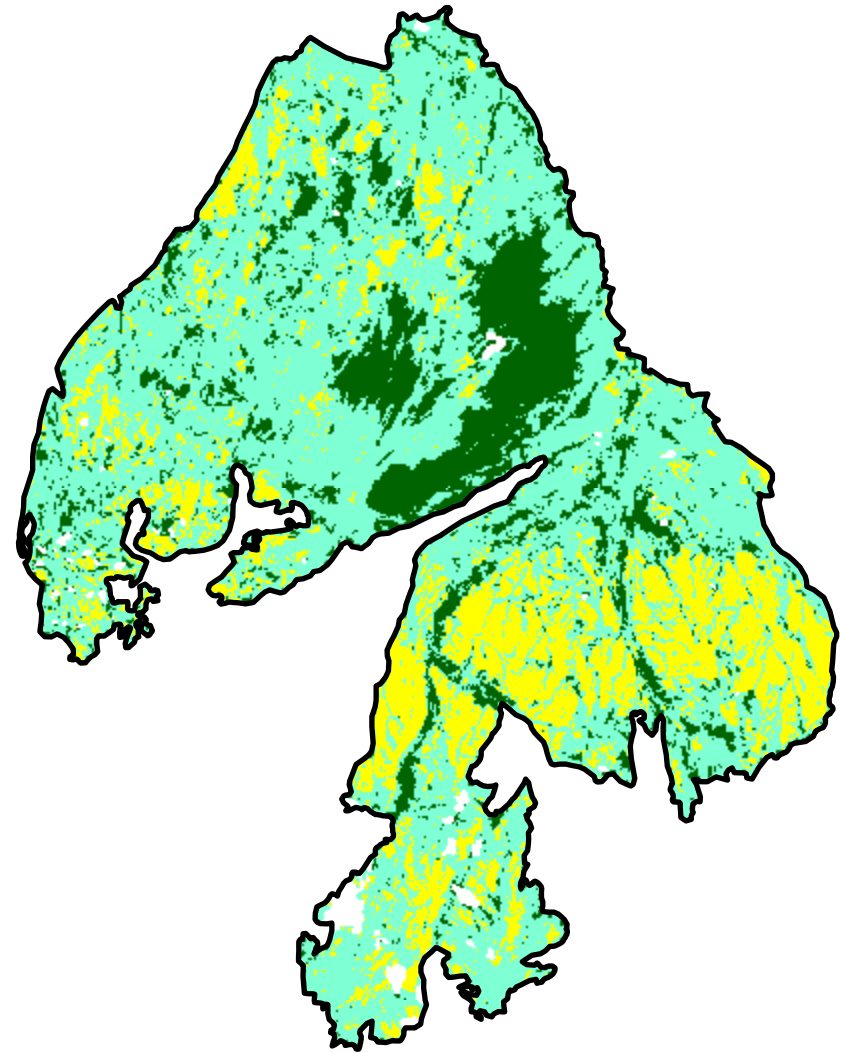
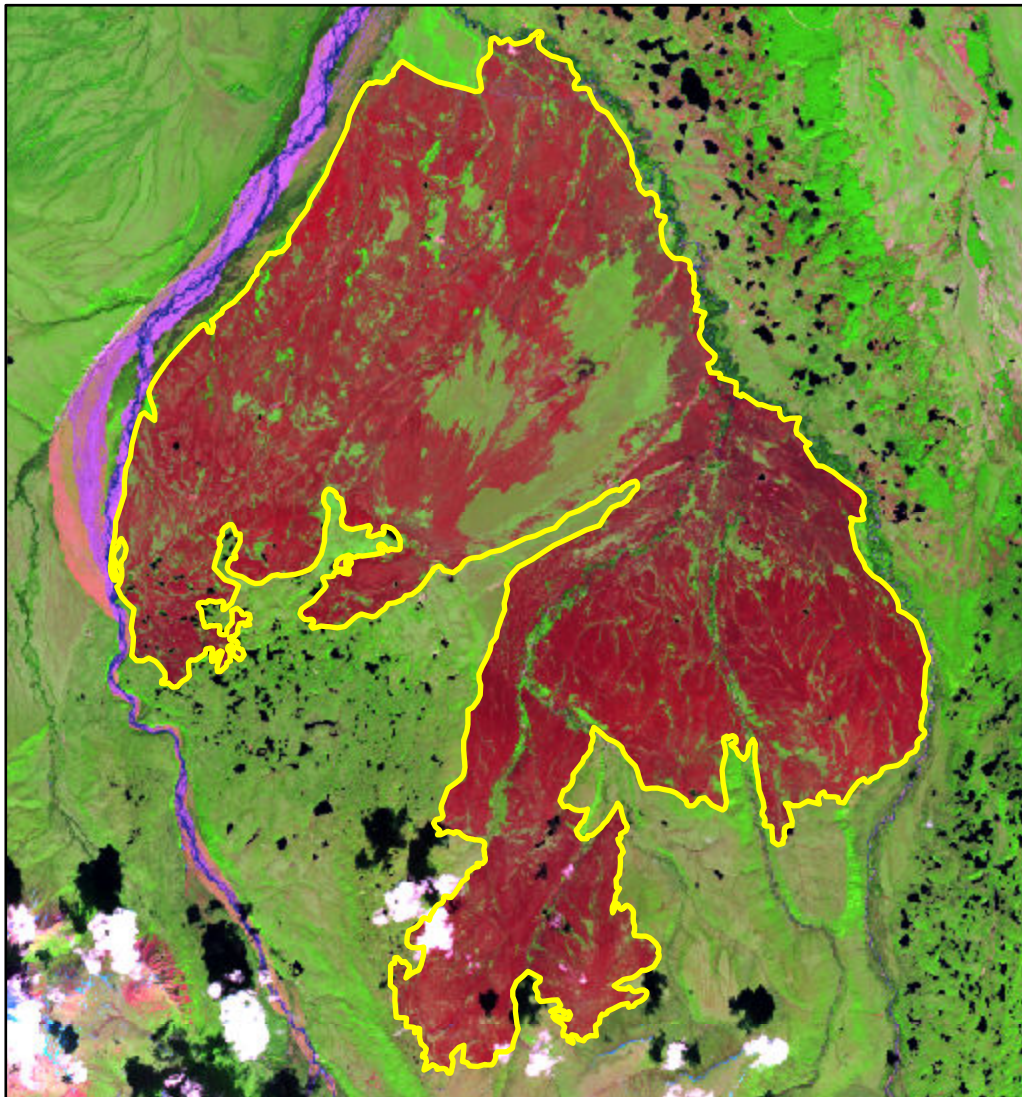


# 2022 Alaska: 2022 OKLAHOMA AND STUART CREEK RX

ak6399914633120220520



Latitude: 63° 54' 46.8"  
 Longitude: -146° 20' 16.8"  
 Fire Ignition Date: May 20, 2022  
 Assessment Type: Initial (SS)  
 Pre-Fire Image Date: N/A  
 Post-Fire Image Date: June 05, 2022 (L9)



This map portrays fire severity for the fire specified in the map title and summarizes proportions of fire severity classes. These data are produced under the Provisional Initial Assessment (PIA) mapping project jointly implemented by the USGS EROS and the USFS GTAC. The PIA mapping project ascertains the locations of fires based on available fire occurrence information provided by federal and state agencies, and other reliable sources. The PIA mapping project reserves the right to correct, update or modify geospatial inputs to this map without notification.



Acreage of Burn Severity	
Burn Severity	Acres
Unburned to Low	11,189
Low	38,886
Moderate	12,543
High	0
Increased Greenness	0
Non-Processing Area Mask*	897
<b>Total</b>	<b>63,515</b>