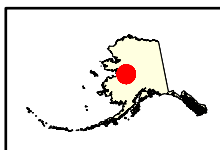
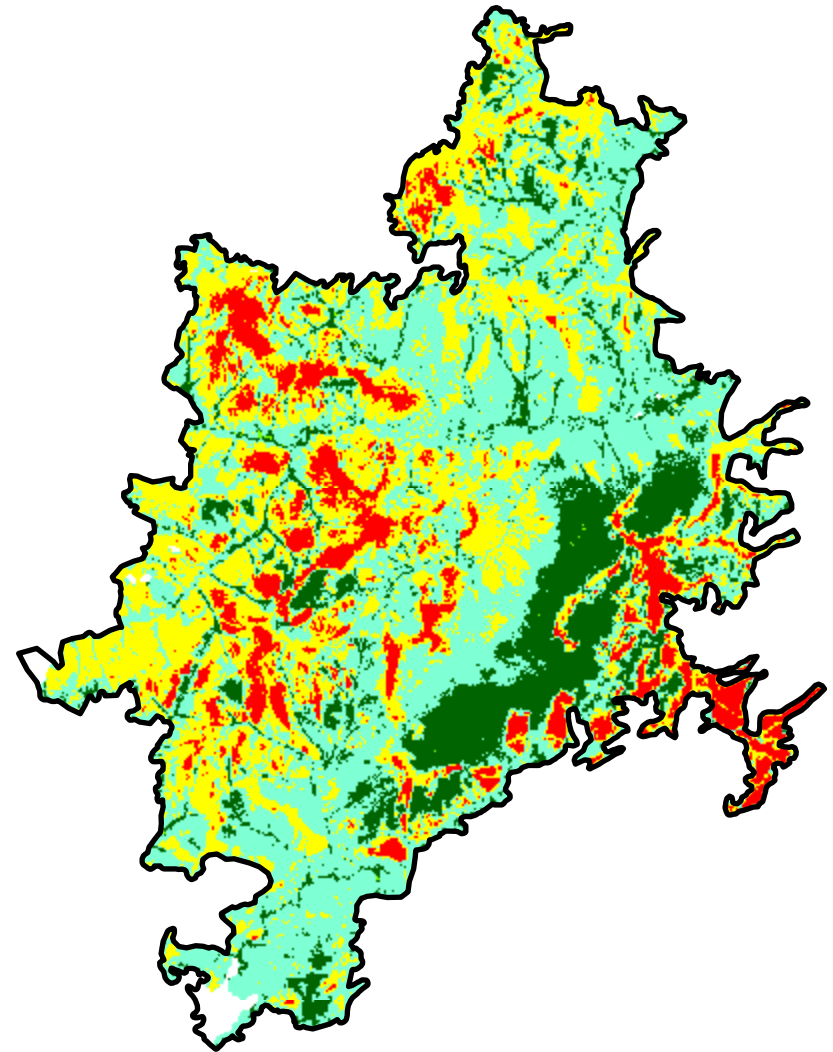
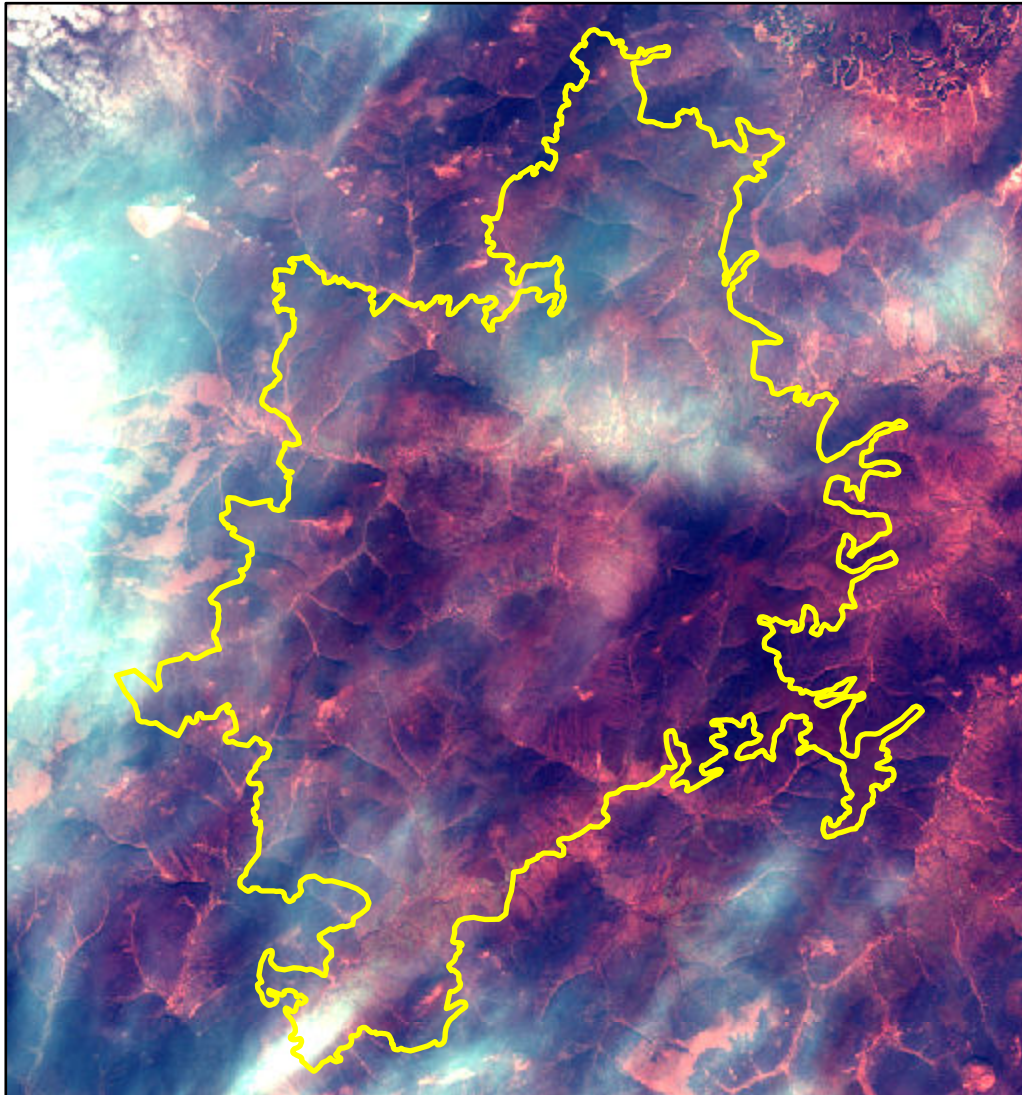


# 2022 Alaska: MUD RIVER

ak6409915701020220626



Latitude: 64° 04' 51.6"  
Longitude: -157° 00' 21.6"  
Fire Ignition Date: June 26, 2022  
Assessment Type: Initial  
Pre-Fire Image Date: September 28, 2020 (L8)  
Post-Fire Image Date: September 26, 2022 (L9)



This map portrays fire severity for the fire specified in the map title and summarizes proportions of fire severity classes. These data are produced under the Provisional Initial Assessment (PIA) mapping project jointly implemented by the USGS EROS and the USFS GTAC. The PIA mapping project ascertains the locations of fires based on available fire occurrence information provided by federal and state agencies, and other reliable sources. The PIA mapping project reserves the right to correct, update or modify geospatial inputs to this map without notification.

0 3.5 7 Miles

## Acreage of Burn Severity

| Burn Severity             | Acres         |
|---------------------------|---------------|
| Unburned to Low           | 7,806         |
| Low                       | 21,826        |
| Moderate                  | 15,080        |
| High                      | 4,925         |
| Increased Greenness       | 28            |
| Non-Processing Area Mask* | 435           |
| <b>Total</b>              | <b>50,100</b> |