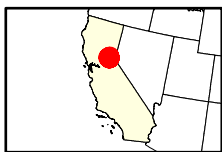
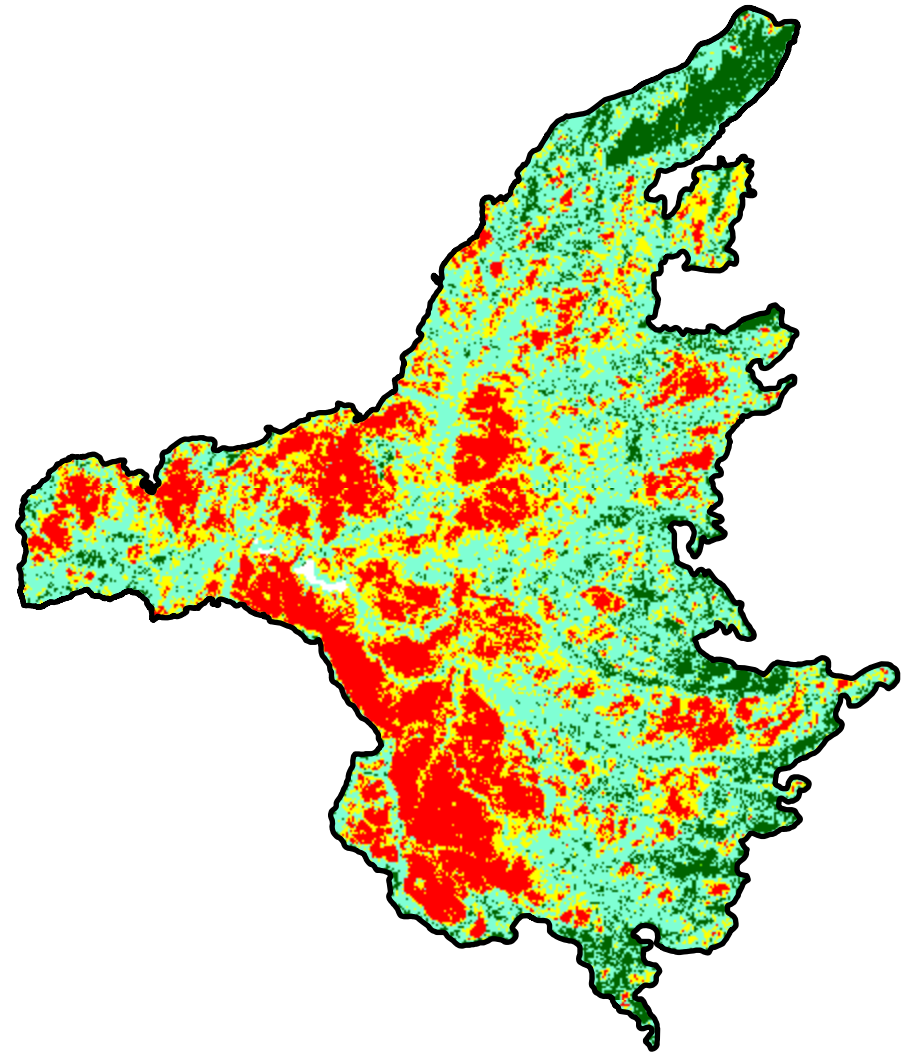
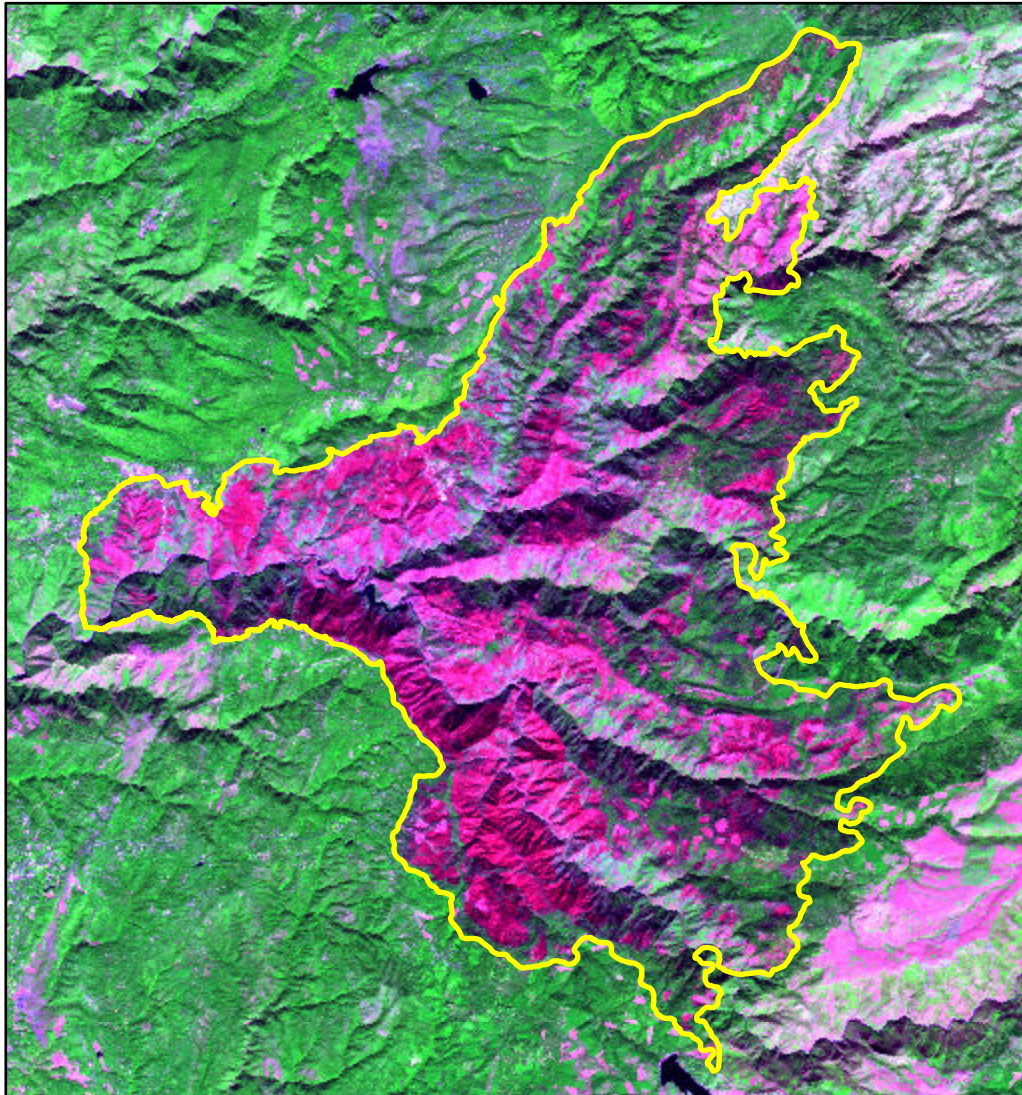


# 2022 California: MOSQUITO

ca3900612074520220907



Latitude: 39° 02' 27.6"  
Longitude: -120° 41' 27.6"  
Fire Ignition Date: September 07, 2022  
Assessment Type: Initial  
Pre-Fire Image Date: September 01, 2022 (L9)  
Post-Fire Image Date: September 25, 2022 (L8)



This map portrays fire severity for the fire specified in the map title and summarizes proportions of fire severity classes. These data are produced under the Provisional Initial Assessment (PIA) mapping project jointly implemented by the USGS EROS and the USFS GTAC. The PIA mapping project ascertains the locations of fires based on available fire occurrence information provided by federal and state agencies, and other reliable sources. The PIA mapping project reserves the right to correct, update or modify geospatial inputs to this map without notification.

0 4.5 9 Miles

## Acreage of Burn Severity

Burn Severity	Acres
Unburned to Low	9,496
Low	32,645
Moderate	17,679
High	18,212
Increased Greenness	23
Non-Processing Area Mask*	135
<b>Total</b>	<b>78,192</b>