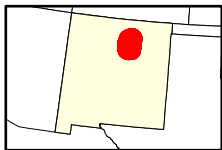
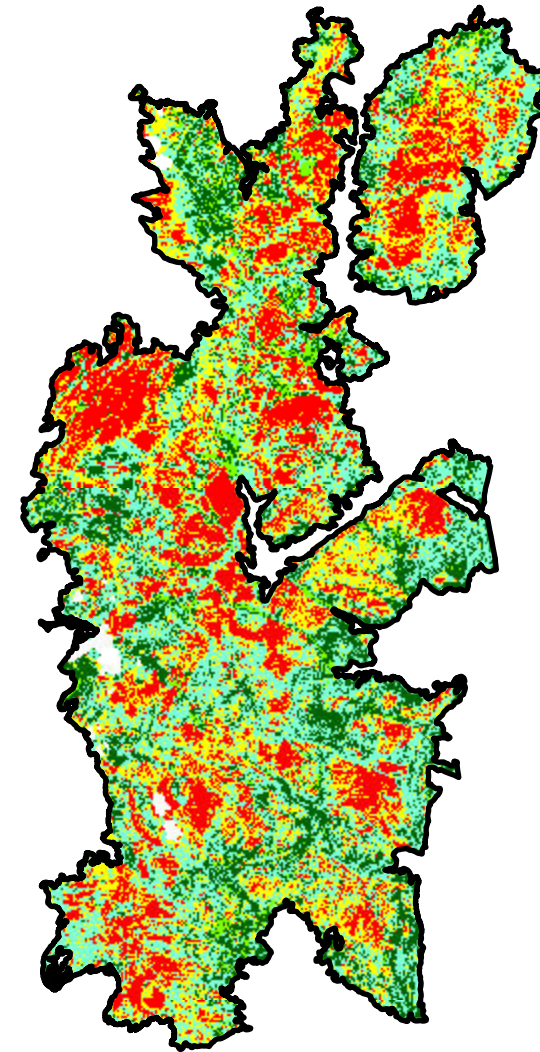
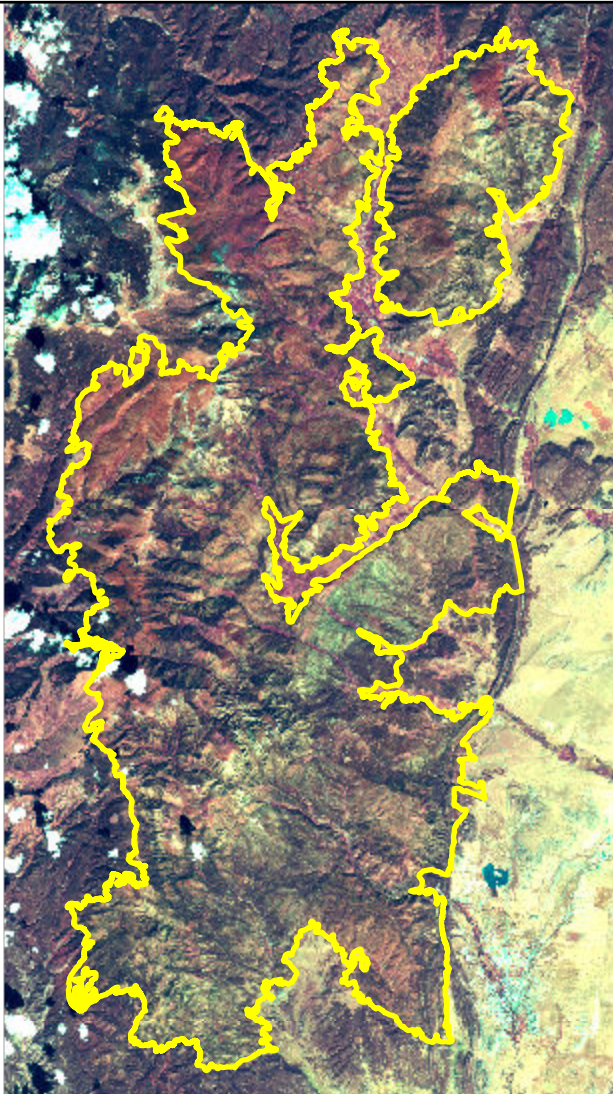


2022 New Mexico: HERMITS PEAK

nm3571810539920220406



Latitude: 35° 51' 18.0"
Longitude: -105° 25' 08.4"
Fire Ignition Date: April 06, 2022
Assessment Type: Initial
Pre-Fire Image Date: September 13, 2020 (L8)
Post-Fire Image Date: September 27, 2022 (L9)



This map portrays fire severity for the fire specified in the map title and summarizes proportions of fire severity classes. These data are produced under the Provisional Initial Assessment (PIA) mapping project jointly implemented by the USGS EROS and the USFS GTAC. The PIA mapping project ascertains the locations of fires based on available fire occurrence information provided by federal and state agencies, and other reliable sources. The PIA mapping project reserves the right to correct, update or modify geospatial inputs to this map without notification.

0 10 20 Miles

Acreage of Burn Severity

Burn Severity	Acres
Unburned to Low	63,065
Low	107,593
Moderate	77,458
High	78,505
Increased Greenness	9,477
Non-Processing Area Mask*	3,508
Total	339,606