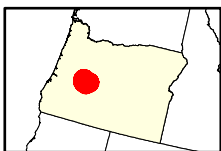
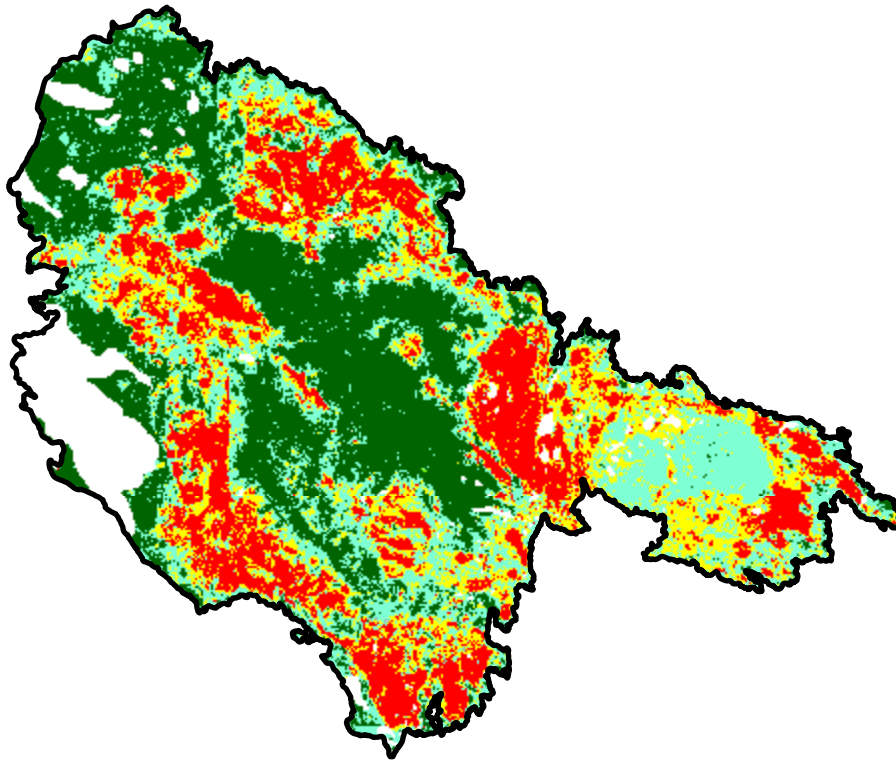
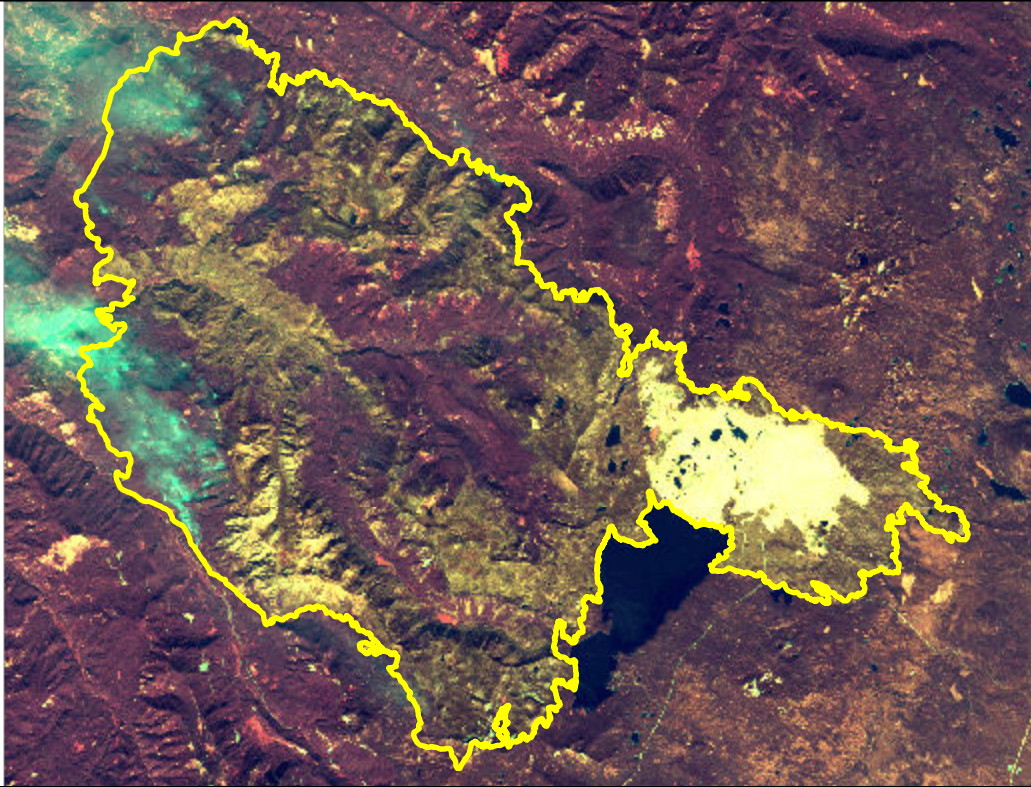


2022 Oregon: CEDAR CREEK

or4372612216720220801



Latitude: 43° 46' 15.6"
Longitude: -122° 08' 06.0"
Fire Ignition Date: August 01, 2022
Assessment Type: Initial
Pre-Fire Image Date: September 20, 2021 (L8)
Post-Fire Image Date: October 01, 2022 (L9)



Acreage of Burn Severity

Burn Severity	Acres
Unburned to Low	40,202
Low	33,267
Moderate	21,906
High	26,078
Increased Greenness	7
Non-Processing Area Mask*	9,487
Total	130,949

This map portrays fire severity for the fire specified in the map title and summarizes proportions of fire severity classes. These data are produced under the Provisional Initial Assessment (PIA) mapping project jointly implemented by the USGS EROS and the USFS GTAC. The PIA mapping project ascertains the locations of fires based on available fire occurrence information provided by federal and state agencies, and other reliable sources. The PIA mapping project reserves the right to correct, update or modify geospatial inputs to this map without notification.

0 6.5 13 Miles