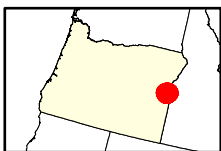
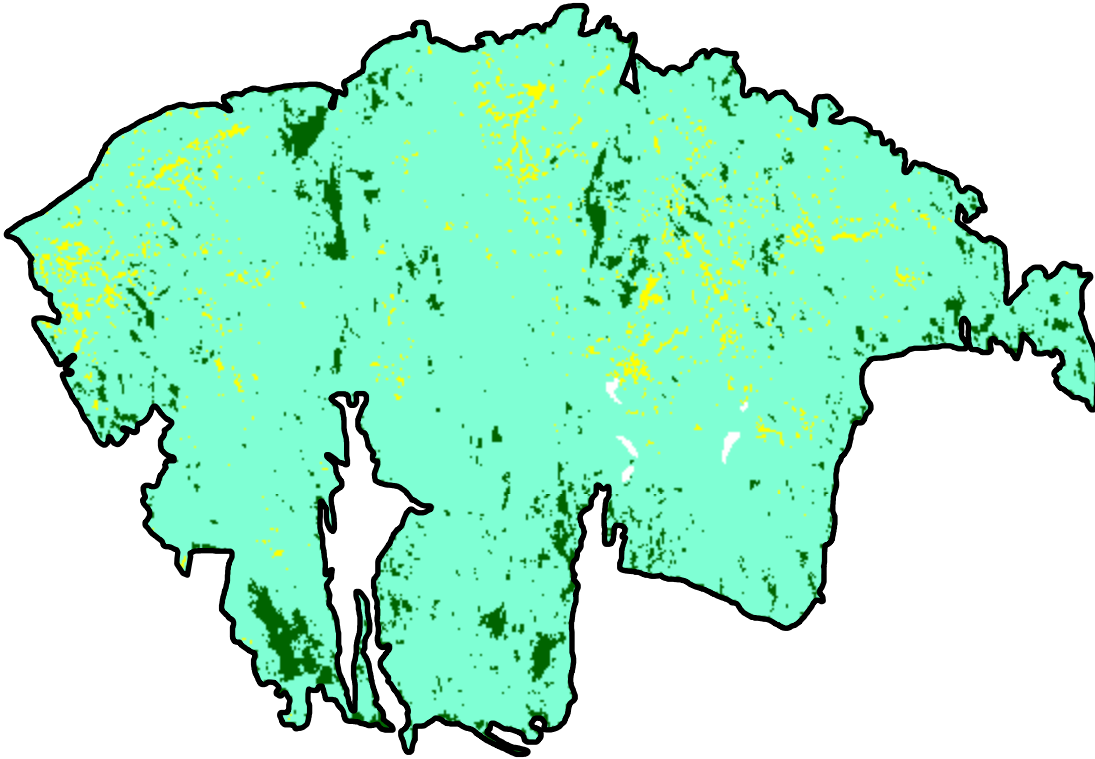
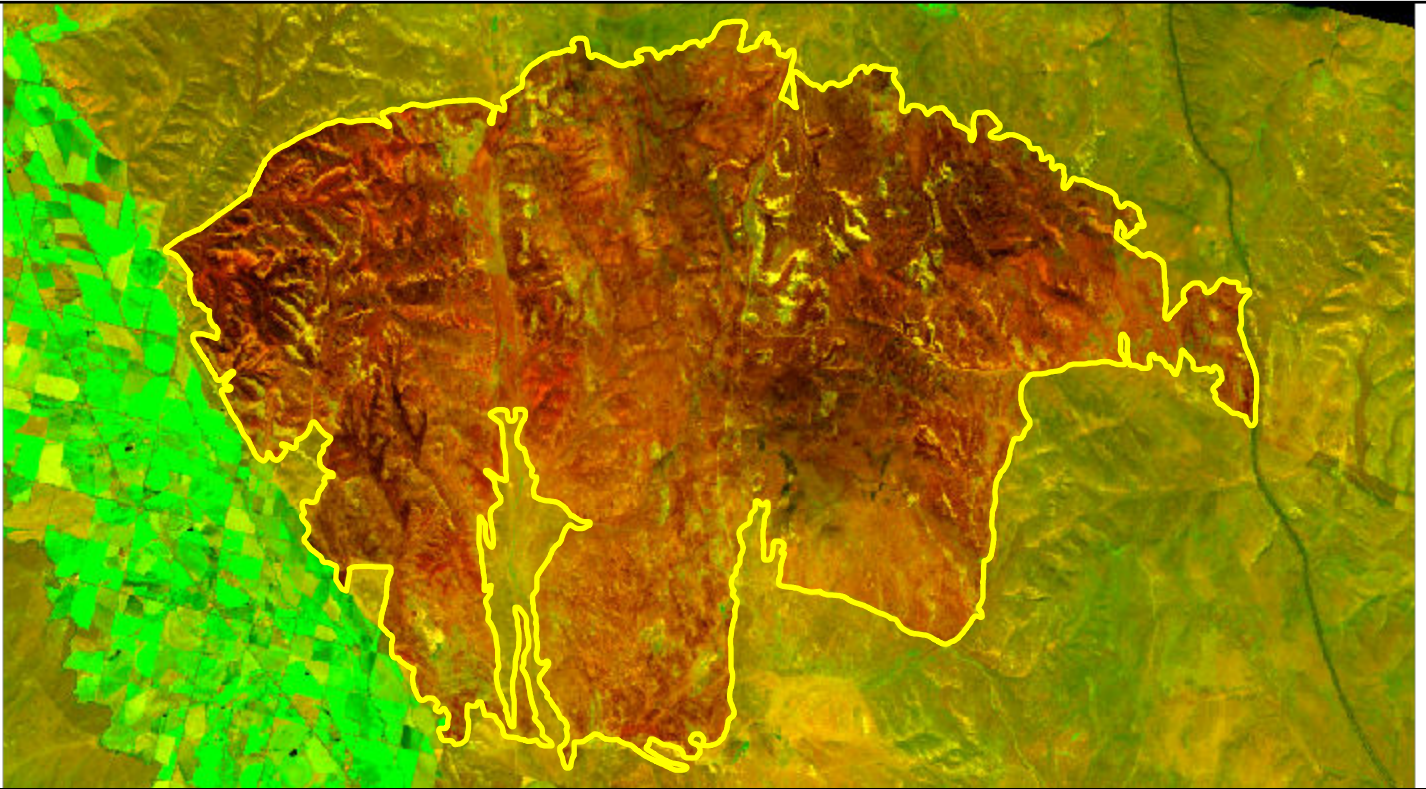


# 2022 Oregon: WILLOW CREEK

or4416311739820220628



Latitude: 44° 09' 54.0"  
Longitude: -117° 15' 54.0"  
Fire Ignition Date: June 28, 2022  
Assessment Type: Initial  
Pre-Fire Image Date: June 25, 2022 (S2B)  
Post-Fire Image Date: July 10, 2022 (S2A)



## Acreage of Burn Severity

Burn Severity	Acres
Unburned to Low	2,902
Low	34,953
Moderate	1,135
High	0
Increased Greenness	0
Non-Processing Area Mask*	68
<b>Total</b>	<b>39,058</b>

This map portrays fire severity for the fire specified in the map title and summarizes proportions of fire severity classes. These data are produced under the Provisional Initial Assessment (PIA) mapping project jointly implemented by the USGS EROS and the USFS GTAC. The PIA mapping project ascertains the locations of fires based on available fire occurrence information provided by federal and state agencies, and other reliable sources. The PIA mapping project reserves the right to correct, update or modify geospatial inputs to this map without notification.

0 2.5 5 Miles