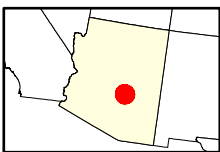
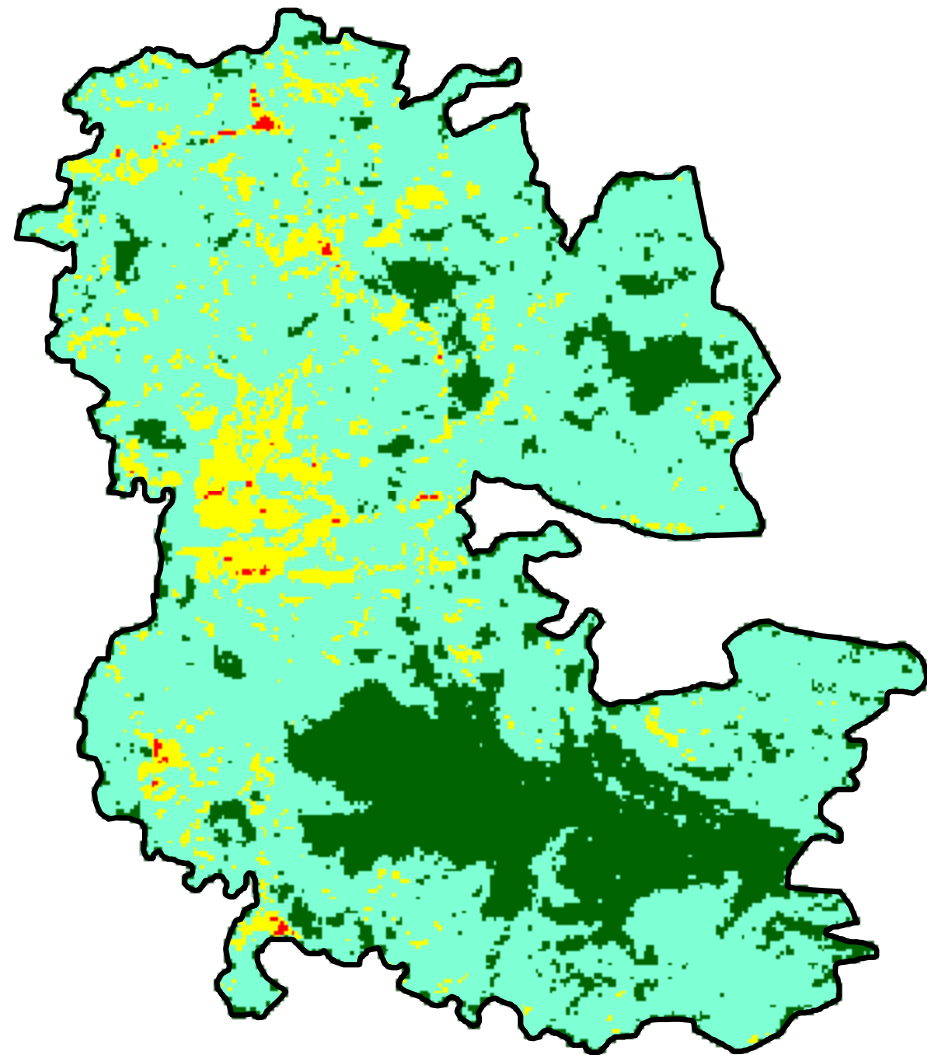
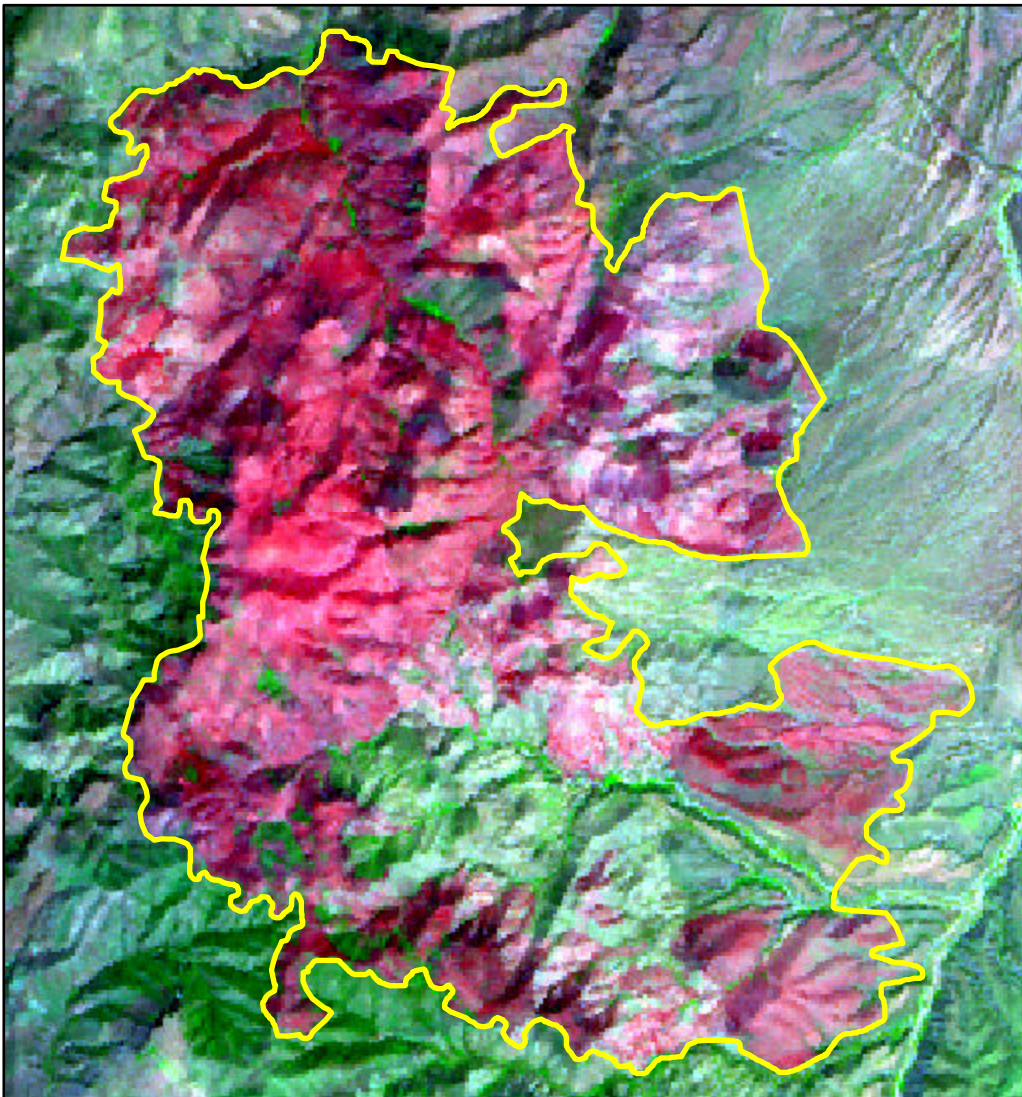


2024 Arizona: BLACK

az3360611113820240712



Latitude: 33° 36' 00.0"
Longitude: -111° 06' 54.0"
Fire Ignition Date: July 12, 2024
Assessment Type: Initial
Pre-Fire Image Date: August 17, 2023 (S2B)
Post-Fire Image Date: August 16, 2024 (S2A)



Acreage of Burn Severity

Burn Severity	Acres
Unburned to Low	2,234
Low	7,264
Moderate	899
High	23
Increased Greenness	0
Non-Processing Area Mask*	0
Total	10,421

This map portrays fire severity for the fire specified in the map title and summarizes proportions of fire severity classes. These data are produced under the Provisional Initial Assessment (PIA) mapping project jointly implemented by the USGS EROS and the USFS GTAC. The PIA mapping project ascertains the locations of fires based on available fire occurrence information provided by federal and state agencies, and other reliable sources. The PIA mapping project reserves the right to correct, update or modify geospatial inputs to this map without notification.

0 1 2 Miles