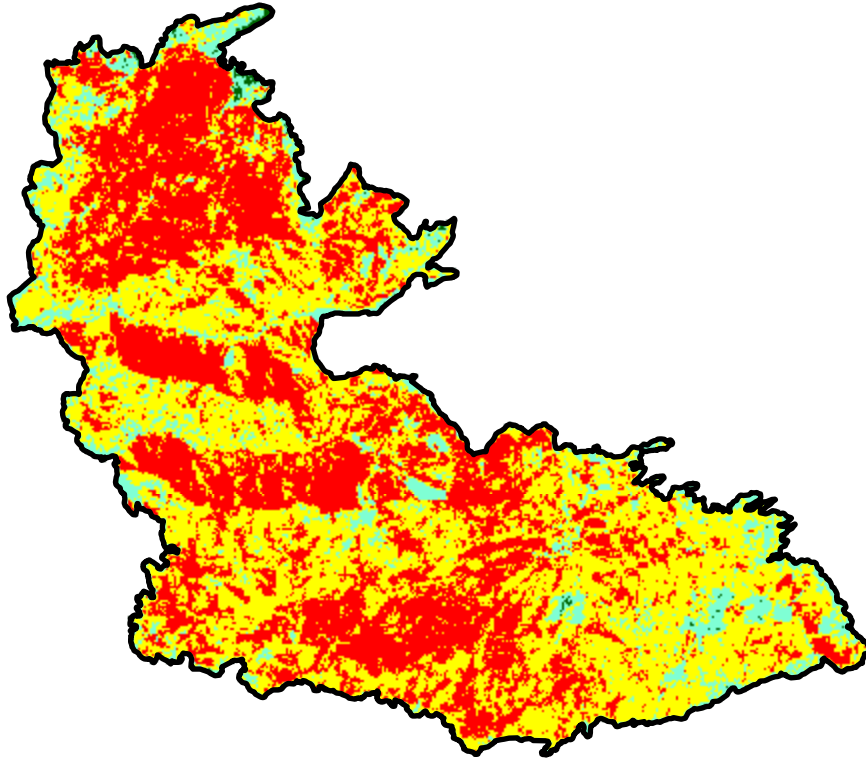
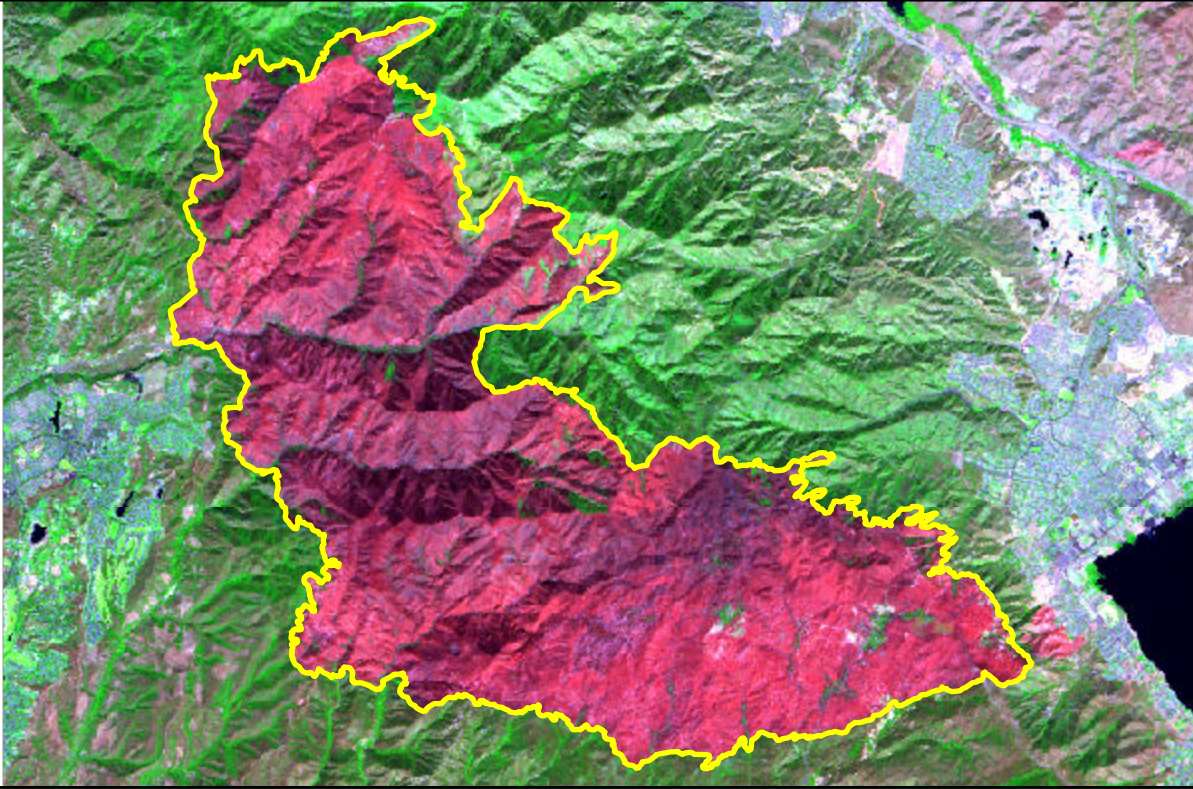


2024 California: AIRPORT

ca3366311758220240909



Latitude: 33° 40' 22.8"
Longitude: -117° 28' 44.4"
Fire Ignition Date: September 09, 2024
Assessment Type: Initial
Pre-Fire Image Date: September 04, 2024 (S2A)
Post-Fire Image Date: September 24, 2024 (S2A)



Acreage of Burn Severity

Burn Severity	Acres
Unburned to Low	123
Low	2,713
Moderate	11,350
High	9,497
Increased Greenness	0
Non-Processing Area Mask*	0
Total	23,683

This map portrays fire severity for the fire specified in the map title and summarizes proportions of fire severity classes. These data are produced under the Provisional Initial Assessment (PIA) mapping project jointly implemented by the USGS EROS and the USFS GTAC. The PIA mapping project ascertains the locations of fires based on available fire occurrence information provided by federal and state agencies, and other reliable sources. The PIA mapping project reserves the right to correct, update or modify geospatial inputs to this map without notification.

0 2.5 5 Miles