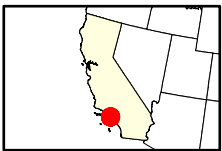
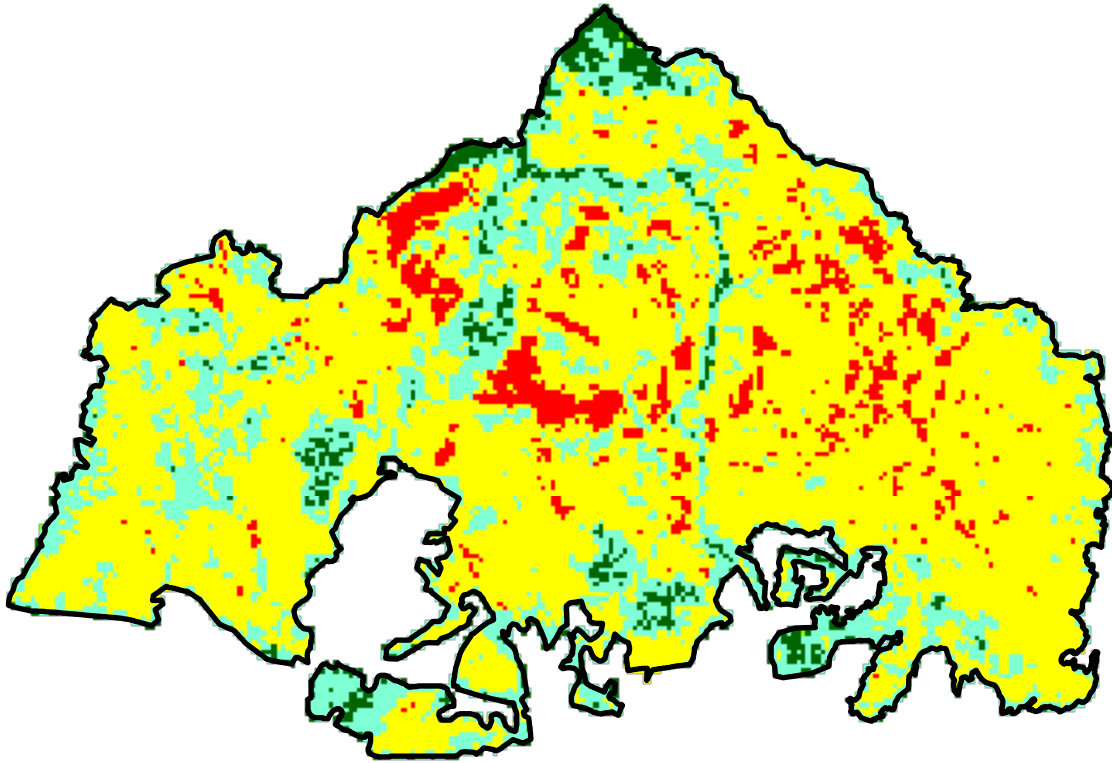


2024 California: FRANKLIN

ca3406311869620241210



Latitude: 34° 03' 07.2"
Longitude: -118° 41' 49.2"
Fire Ignition Date: December 10, 2024
Assessment Type: Initial
Pre-Fire Image Date: January 12, 2024 (L9)
Post-Fire Image Date: December 21, 2024 (L8)



Acreage of Burn Severity

Burn Severity	Acres
Unburned to Low	163
Low	978
Moderate	2,897
High	296
Increased Greenness	1
Non-Processing Area Mask*	0
Total	4,335

This map portrays fire severity for the fire specified in the map title and summarizes proportions of fire severity classes. These data are produced under the Provisional Initial Assessment (PIA) mapping project jointly implemented by the USGS EROS and the USFS GTAC. The PIA mapping project ascertains the locations of fires based on available fire occurrence information provided by federal and state agencies, and other reliable sources. The PIA mapping project reserves the right to correct, update or modify geospatial inputs to this map without notification.

0 0.95 1.9 Miles