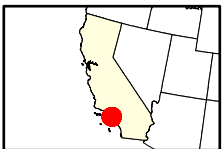
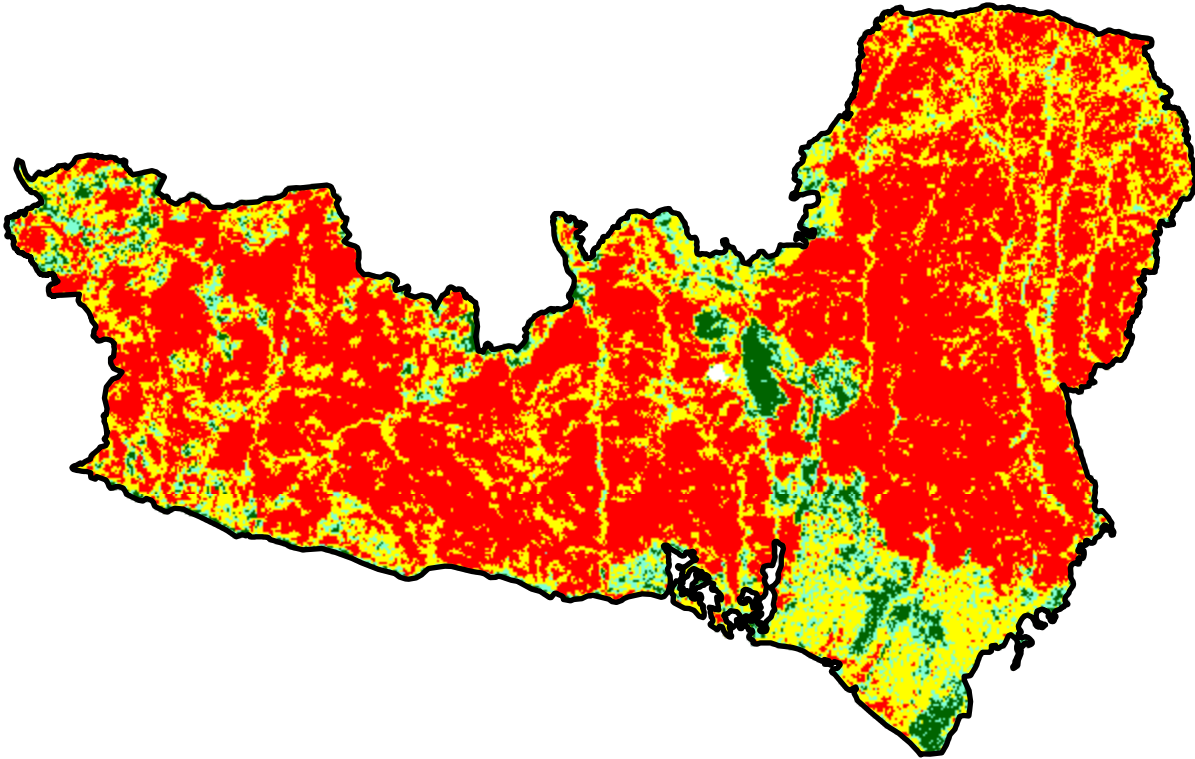


2025 California: PALISADES

ca3406811855120250107



Latitude: 34° 04' 48.0"
Longitude: -118° 35' 38.4"
Fire Ignition Date: January 07, 2025
Assessment Type: Initial
Pre-Fire Image Date: January 12, 2024 (L9)
Post-Fire Image Date: January 14, 2025 (L9)



Acreage of Burn Severity

Burn Severity	Acres
Unburned to Low	1,083
Low	1,750
Moderate	6,980
High	14,173
Increased Greenness	1
Non-Processing Area Mask*	14
Total	24,001

This map portrays fire severity for the fire specified in the map title and summarizes proportions of fire severity classes. These data are produced under the Provisional Initial Assessment (PIA) mapping project jointly implemented by the USGS EROS and the USFS GTAC. The PIA mapping project ascertains the locations of fires based on available fire occurrence information provided by federal and state agencies, and other reliable sources. The PIA mapping project reserves the right to correct, update or modify geospatial inputs to this map without notification.

0 2 4 Miles