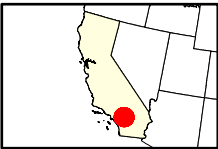
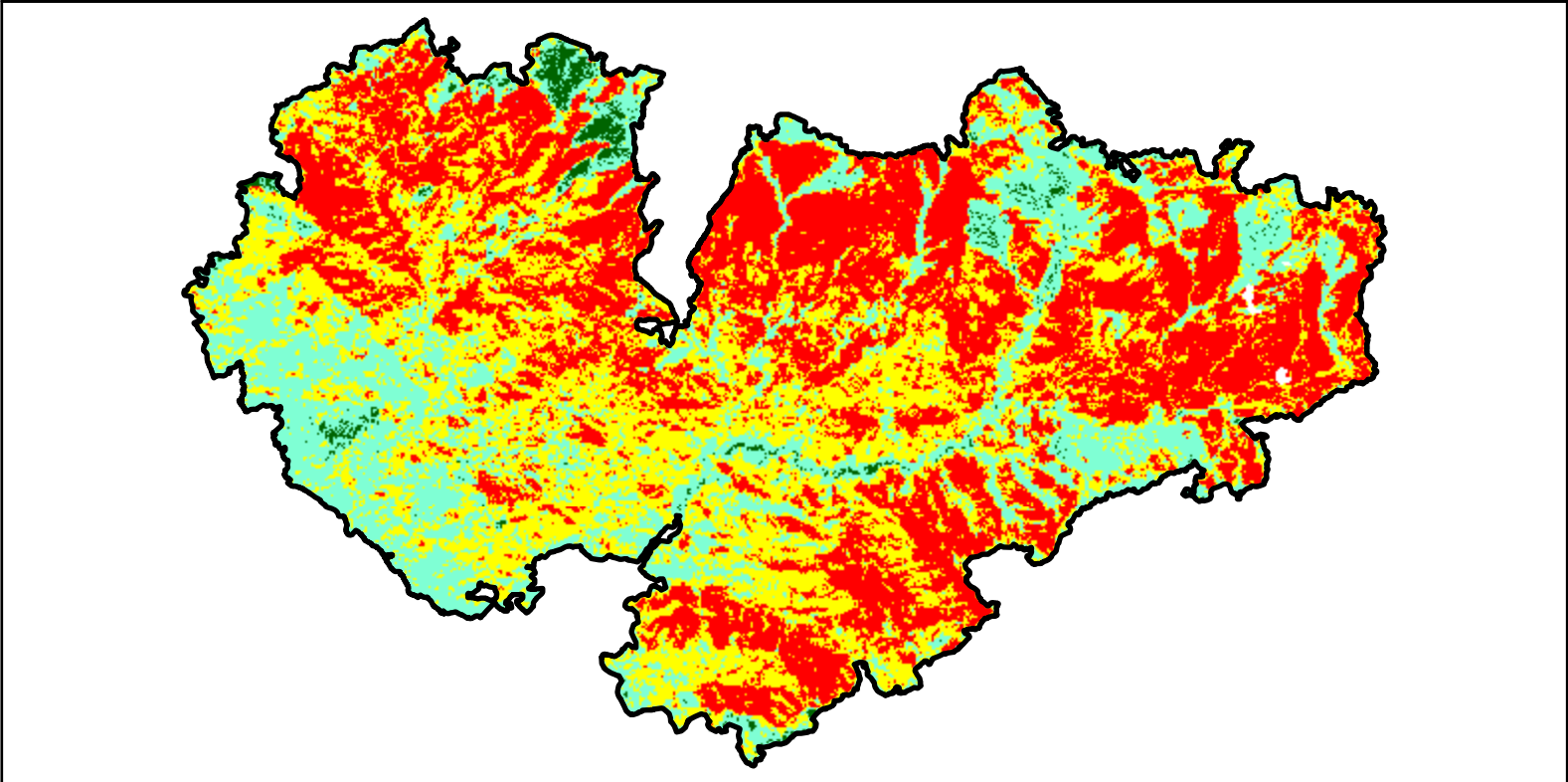
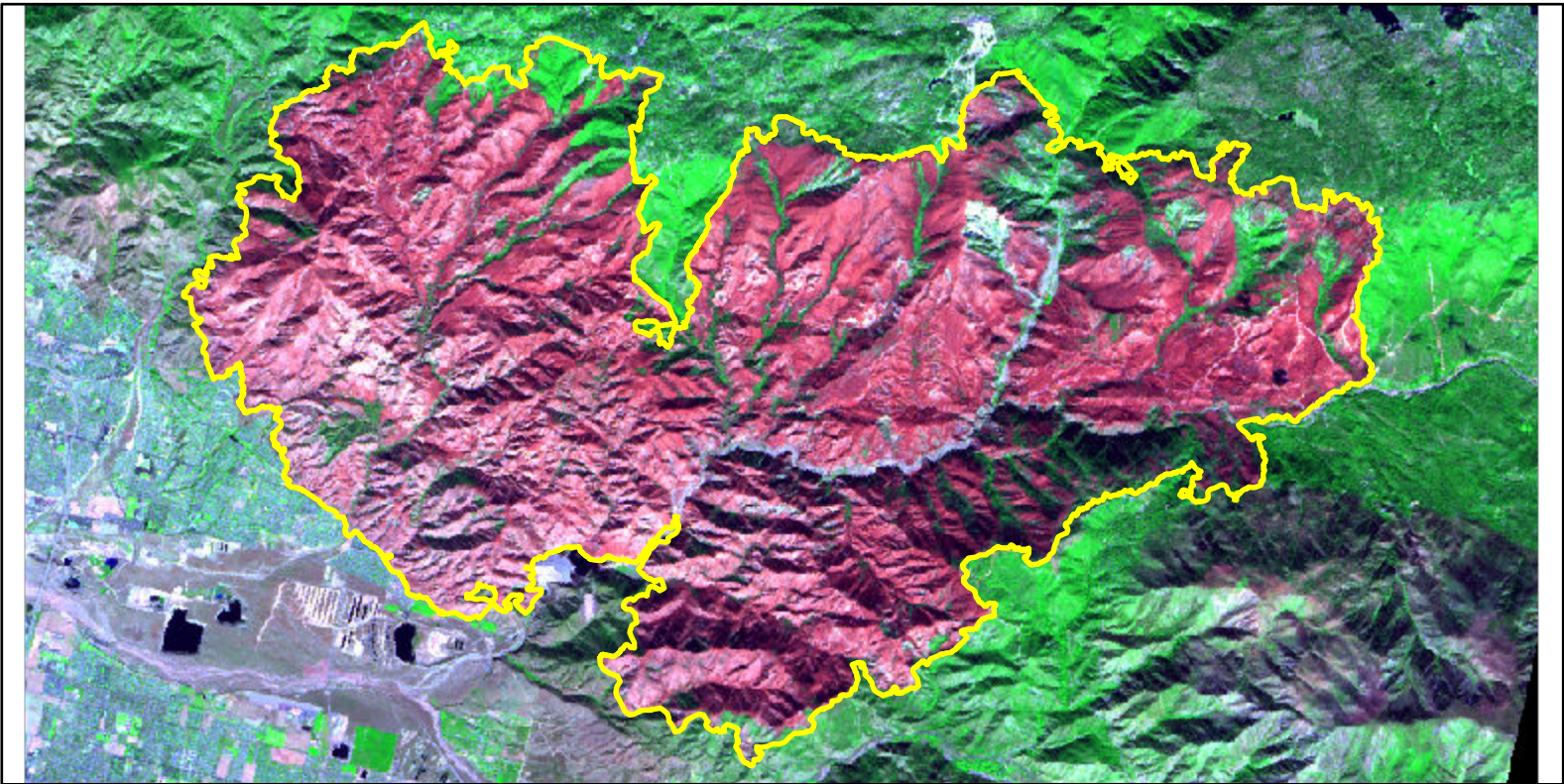


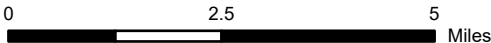
2024 California: LINE
ca3412111715520240906



Latitude: 34° 09' 18.0"
Longitude: -117° 03' 43.2"
Fire Ignition Date: September 06, 2024
Assessment Type: Initial
Pre-Fire Image Date: October 20, 2023 (S2A)
Post-Fire Image Date: October 19, 2024 (S2B)



This map portrays fire severity for the fire specified in the map title and summarizes proportions of fire severity classes. These data are produced under the Provisional Initial Assessment (PIA) mapping project jointly implemented by the USGS EROS and the USFS GTAC. The PIA mapping project ascertains the locations of fires based on available fire occurrence information provided by federal and state agencies, and other reliable sources. The PIA mapping project reserves the right to correct, update or modify geospatial inputs to this map without notification.



Acreage of Burn Severity	
Burn Severity	Acres
Unburned to Low	686
Low	10,851
Moderate	16,364
High	16,906
Increased Greenness	2
Non-Processing Area Mask*	40
Total	44,849