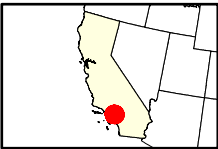
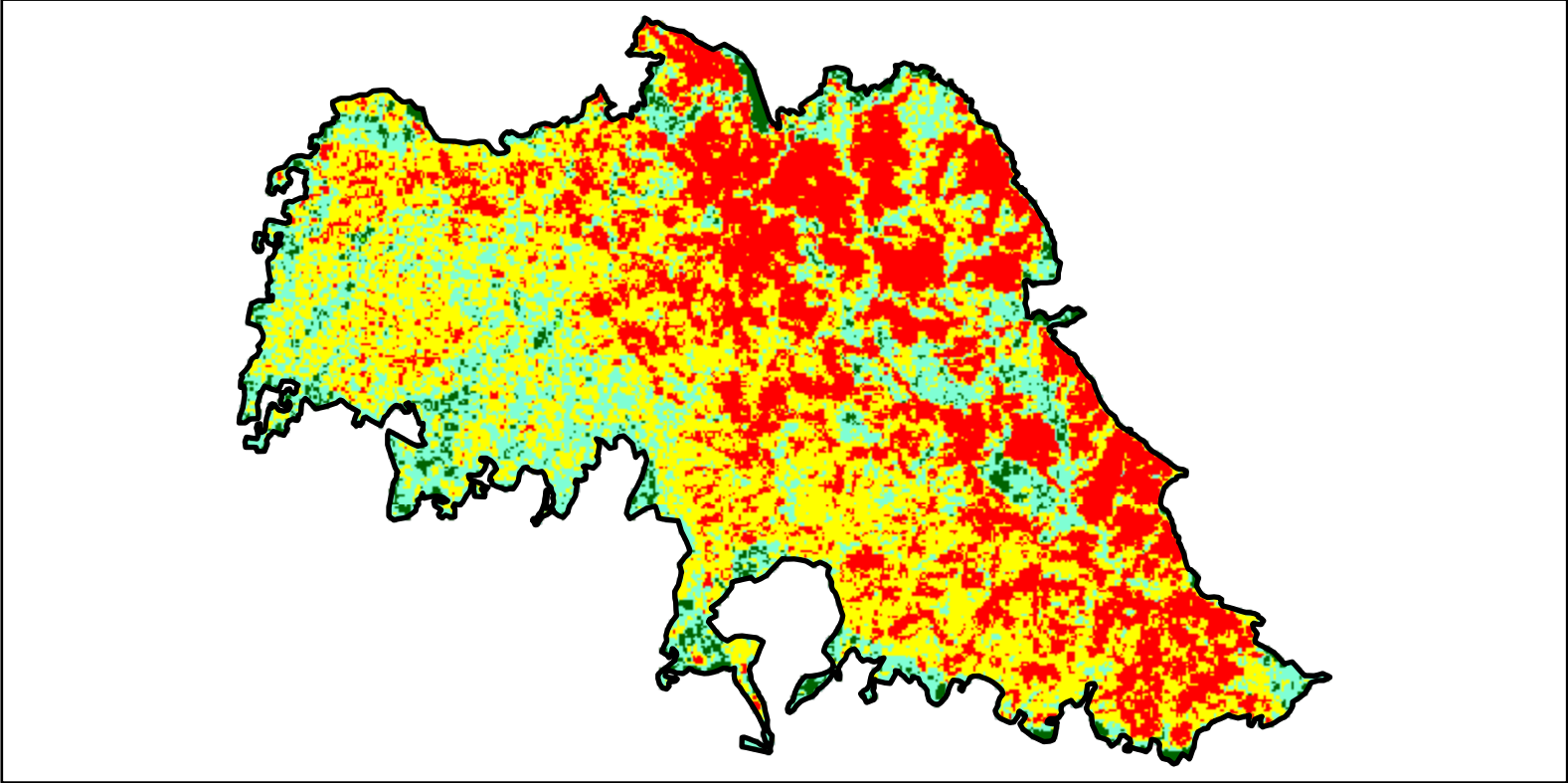
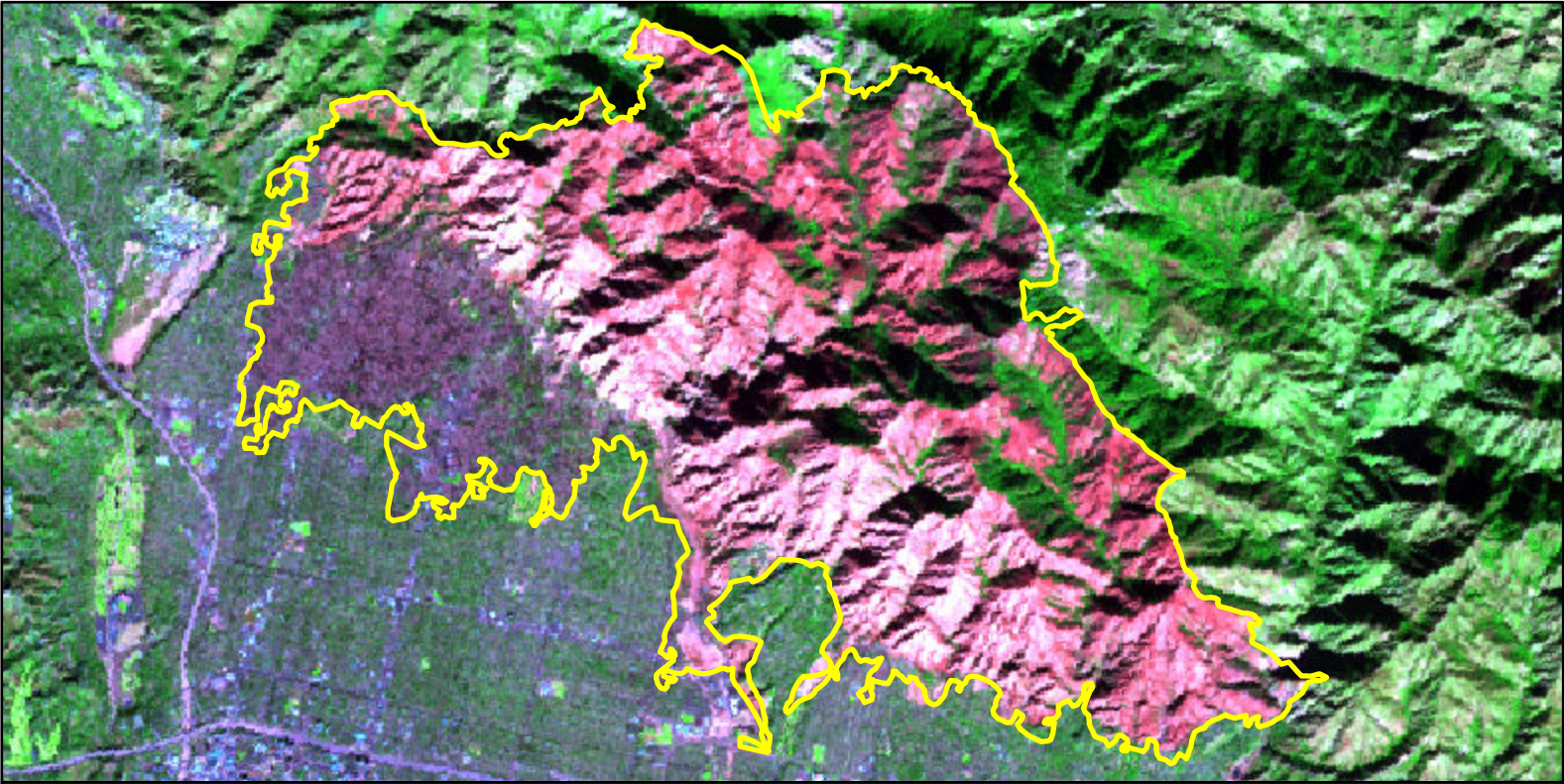


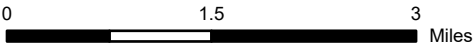
2025 California: EATON
ca3419211810520250108



Latitude: 34° 11' 56.4"
Longitude: -118° 05' 16.8"
Fire Ignition Date: January 08, 2025
Assessment Type: Initial
Pre-Fire Image Date: December 29, 2024 (L9)
Post-Fire Image Date: January 14, 2025 (L9)



This map portrays fire severity for the fire specified in the map title and summarizes proportions of fire severity classes. These data are produced under the Provisional Initial Assessment (PIA) mapping project jointly implemented by the USGS EROS and the USFS GTAC. The PIA mapping project ascertains the locations of fires based on available fire occurrence information provided by federal and state agencies, and other reliable sources. The PIA mapping project reserves the right to correct, update or modify geospatial inputs to this map without notification.



Acreage of Burn Severity	
Burn Severity	Acres
Unburned to Low	601
Low	3,083
Moderate	6,049
High	4,496
Increased Greenness	1
Non-Processing Area Mask*	0
Total	14,231