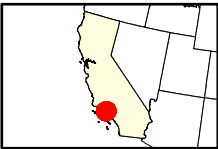
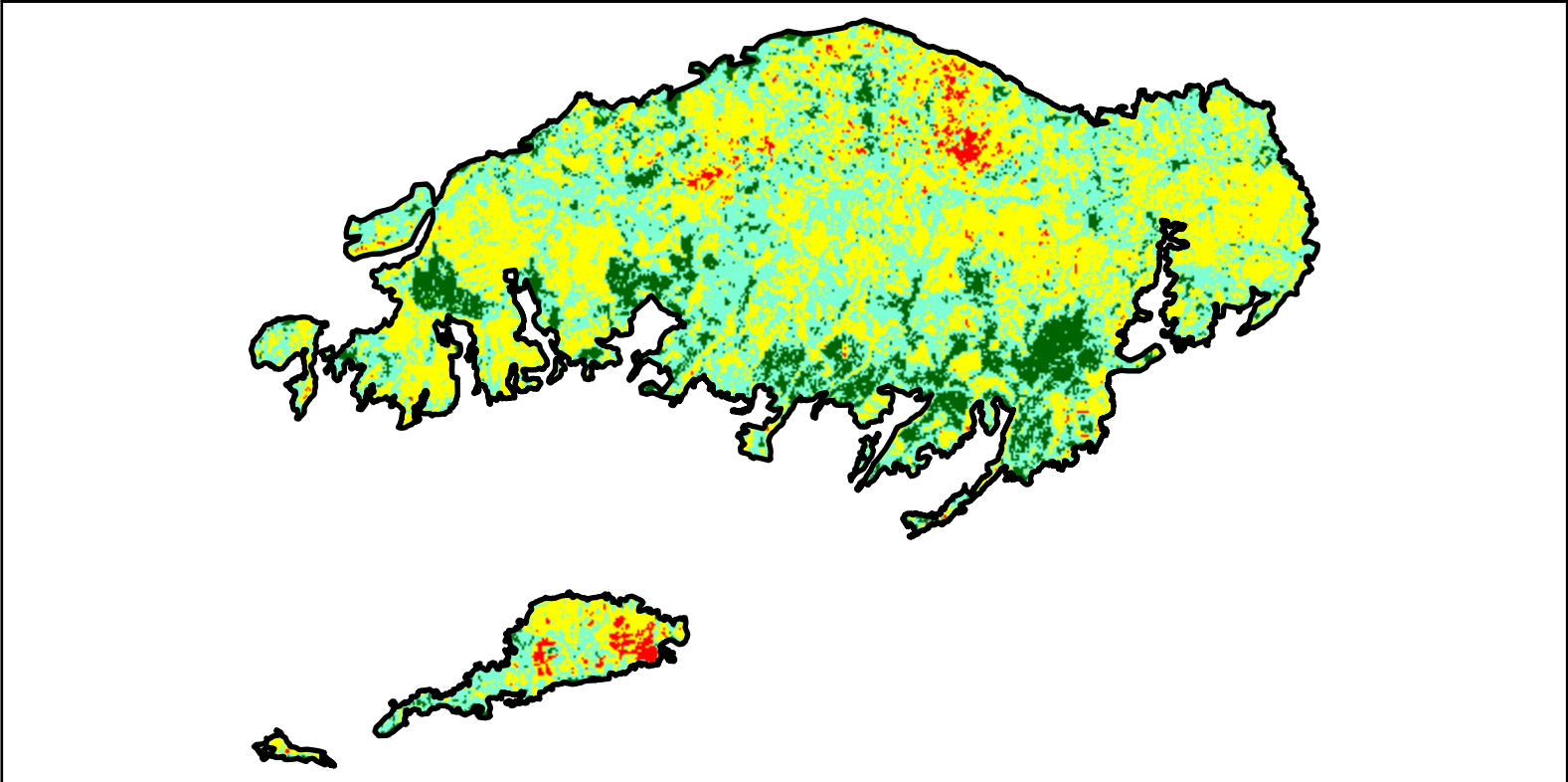
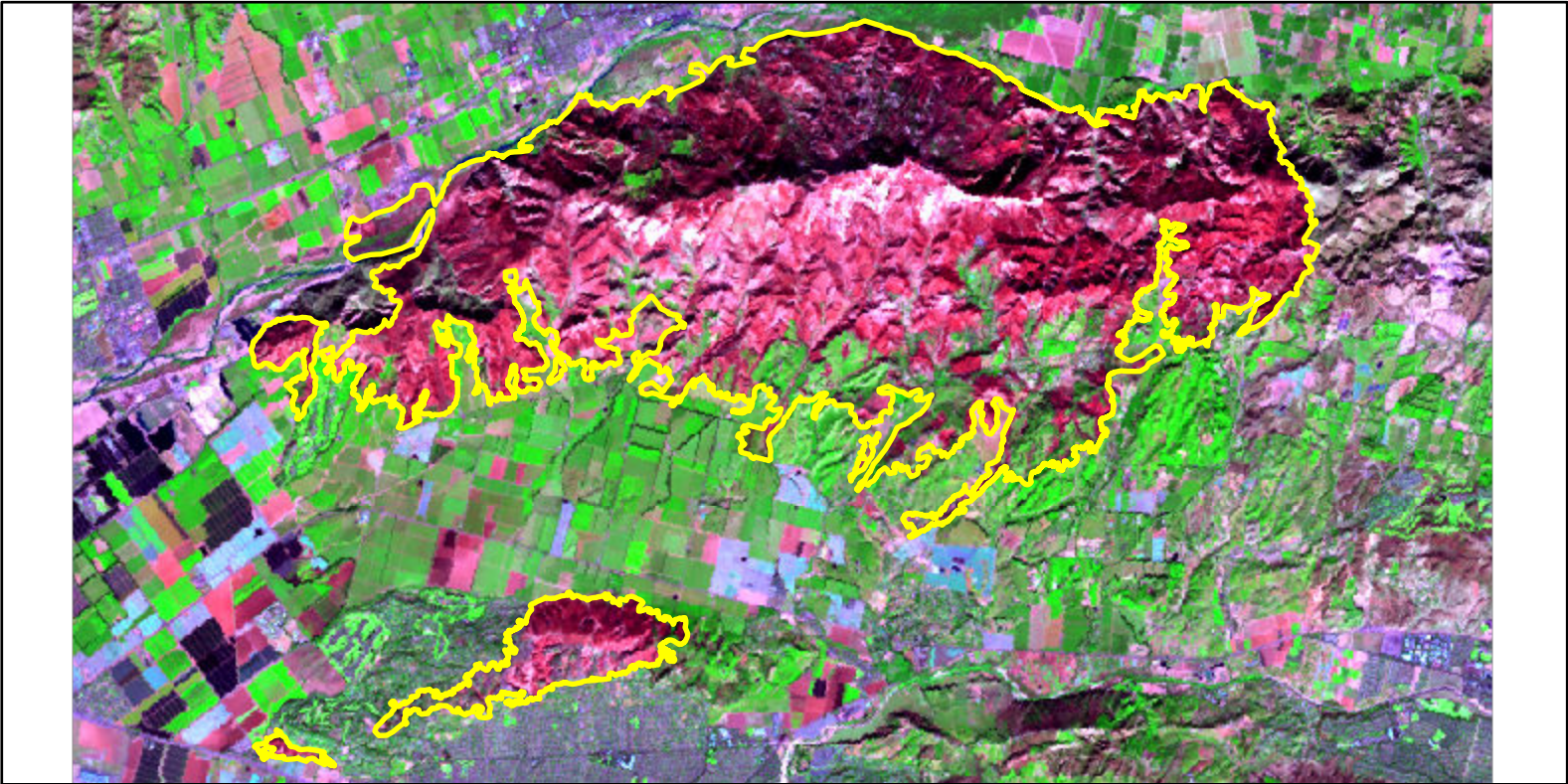


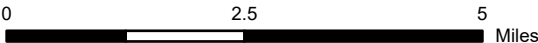
2024 California: MOUNTAIN
ca3431511897120241106



Latitude: 34° 17' 27.6"
Longitude: -119° 01' 40.8"
Fire Ignition Date: November 06, 2024
Assessment Type: Initial
Pre-Fire Image Date: November 03, 2024 (L8)
Post-Fire Image Date: November 11, 2024 (L9)



This map portrays fire severity for the fire specified in the map title and summarizes proportions of fire severity classes. These data are produced under the Provisional Initial Assessment (PIA) mapping project jointly implemented by the USGS EROS and the USFS GTAC. The PIA mapping project ascertains the locations of fires based on available fire occurrence information provided by federal and state agencies, and other reliable sources. The PIA mapping project reserves the right to correct, update or modify geospatial inputs to this map without notification.



Acreage of Burn Severity	
Burn Severity	Acres
Unburned to Low	2,618
Low	9,187
Moderate	8,695
High	353
Increased Greenness	15
Non-Processing Area Mask*	0
Total	20,868