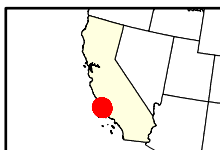
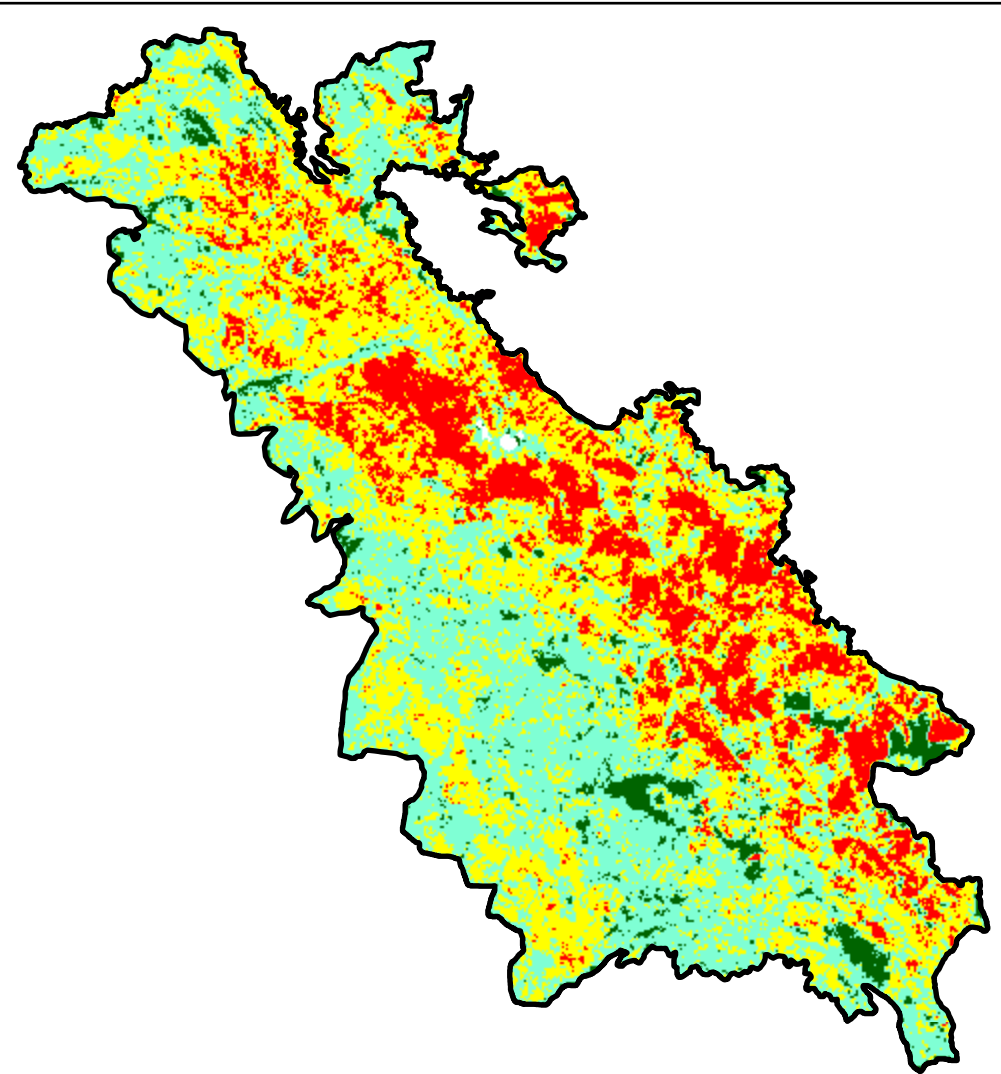
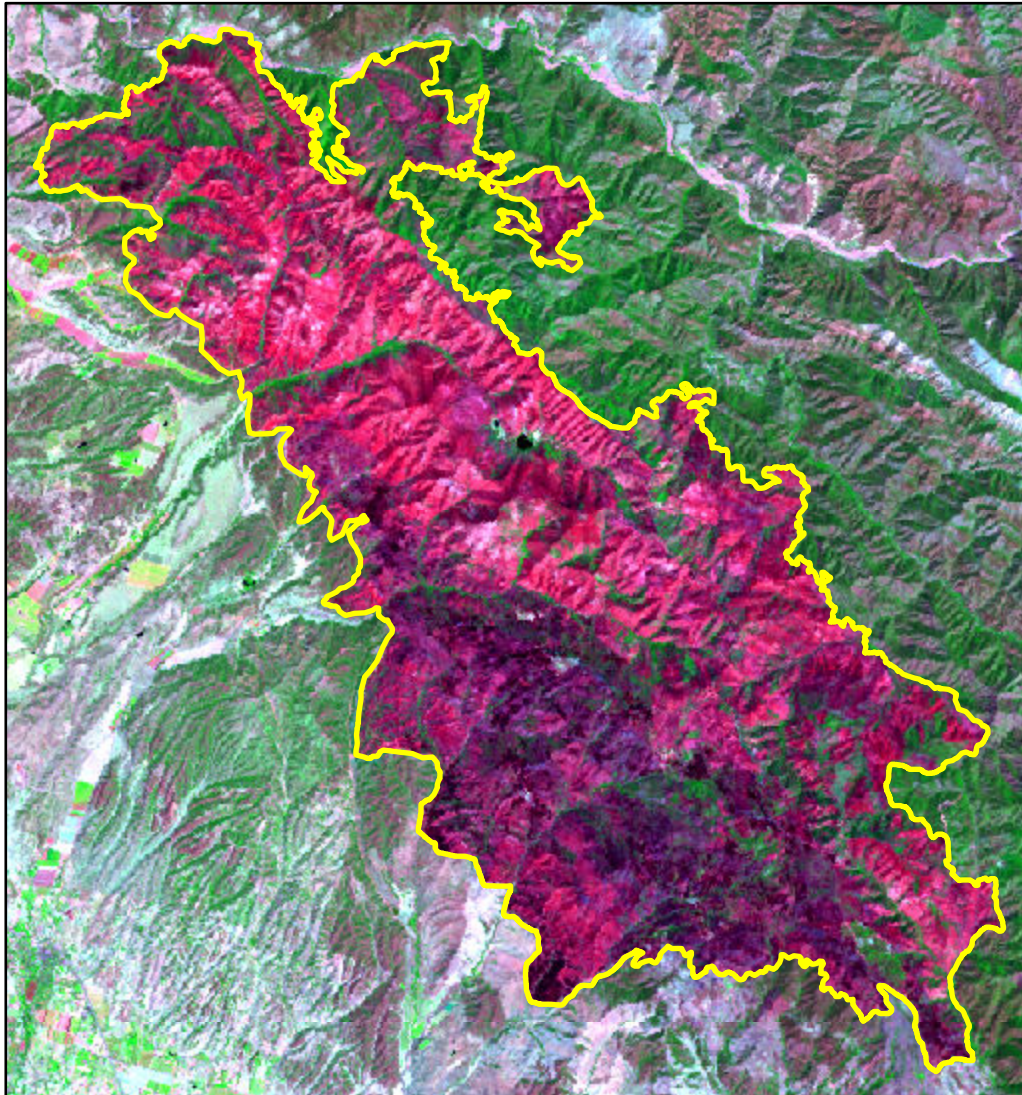


2024 California: LAKE

ca3478712005220240705



Latitude: 34° 45' 43.2"
Longitude: -120° 02' 06.0"
Fire Ignition Date: July 05, 2024
Assessment Type: Initial
Pre-Fire Image Date: July 05, 2024 (L8)
Post-Fire Image Date: August 06, 2024 (L8)



This map portrays fire severity for the fire specified in the map title and summarizes proportions of fire severity classes. These data are produced under the Provisional Initial Assessment (PIA) mapping project jointly implemented by the USGS EROS and the USFS GTAC. The PIA mapping project ascertains the locations of fires based on available fire occurrence information provided by federal and state agencies, and other reliable sources. The PIA mapping project reserves the right to correct, update or modify geospatial inputs to this map without notification.

0 3 6
Miles

Acreage of Burn Severity

Burn Severity	Acres
Unburned to Low	2,117
Low	15,830
Moderate	16,460
High	6,821
Increased Greenness	1
Non-Processing Area Mask*	39
Total	41,267