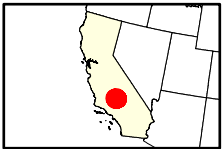
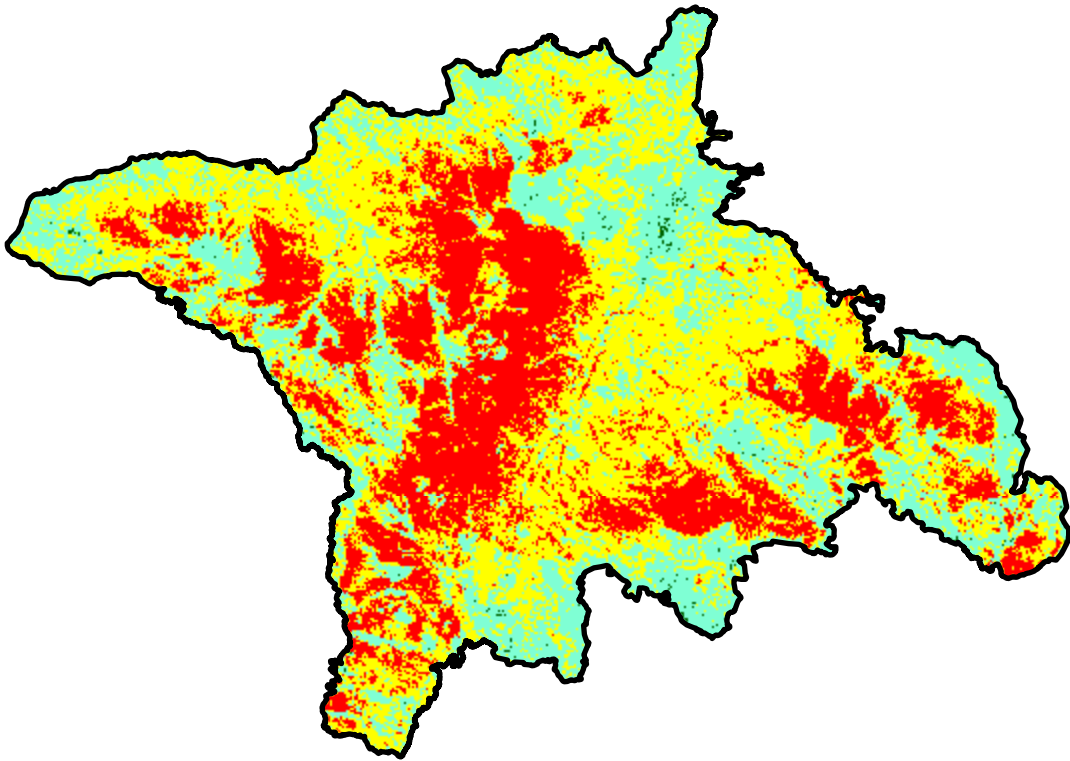
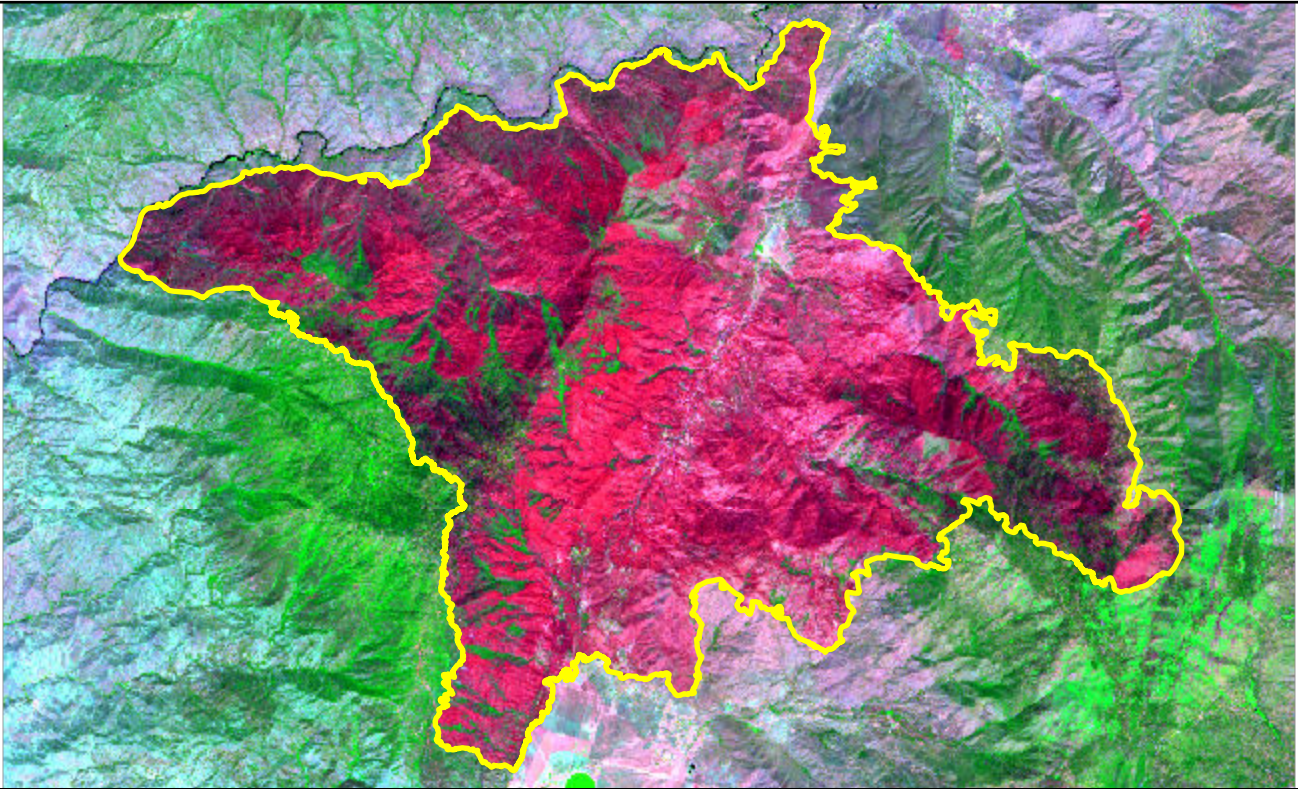


# 2024 California: BOREL

ca3551511868420240724



Latitude: 35° 29' 56.4"  
Longitude: -118° 32' 02.4"  
Fire Ignition Date: July 24, 2024  
Assessment Type: Initial  
Pre-Fire Image Date: July 19, 2024 (S2A)  
Post-Fire Image Date: August 15, 2024 (S2A)



## Acreage of Burn Severity

Burn Severity	Acres
Unburned to Low	199
Low	17,560
Moderate	25,978
High	15,551
Increased Greenness	1
Non-Processing Area Mask*	0
<b>Total</b>	<b>59,290</b>

This map portrays fire severity for the fire specified in the map title and summarizes proportions of fire severity classes. These data are produced under the Provisional Initial Assessment (PIA) mapping project jointly implemented by the USGS EROS and the USFS GTAC. The PIA mapping project ascertains the locations of fires based on available fire occurrence information provided by federal and state agencies, and other reliable sources. The PIA mapping project reserves the right to correct, update or modify geospatial inputs to this map without notification.

0 4 8 Miles