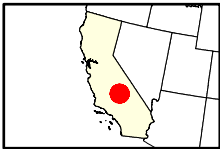
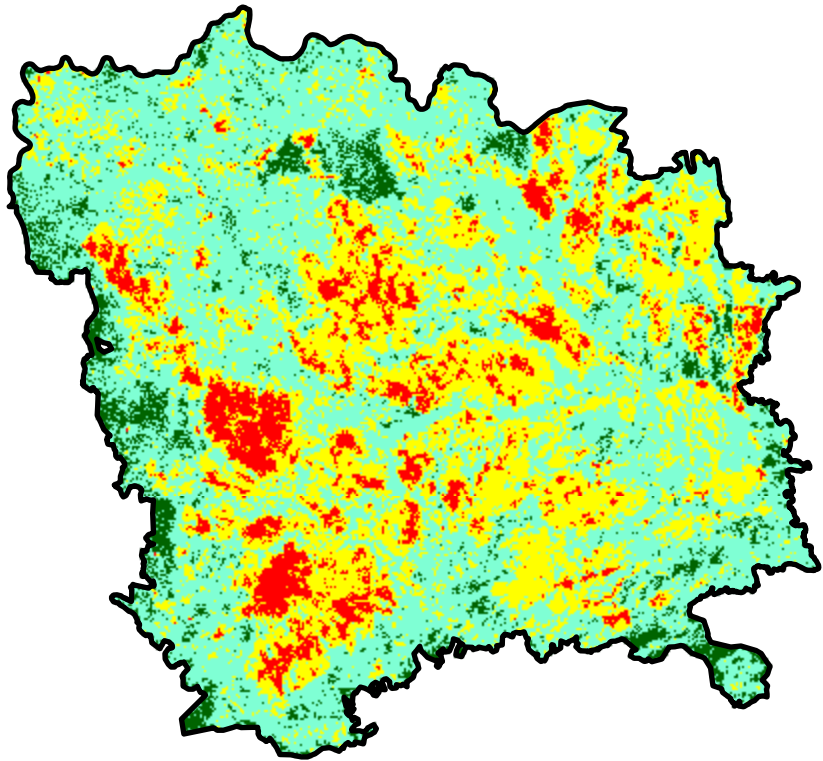
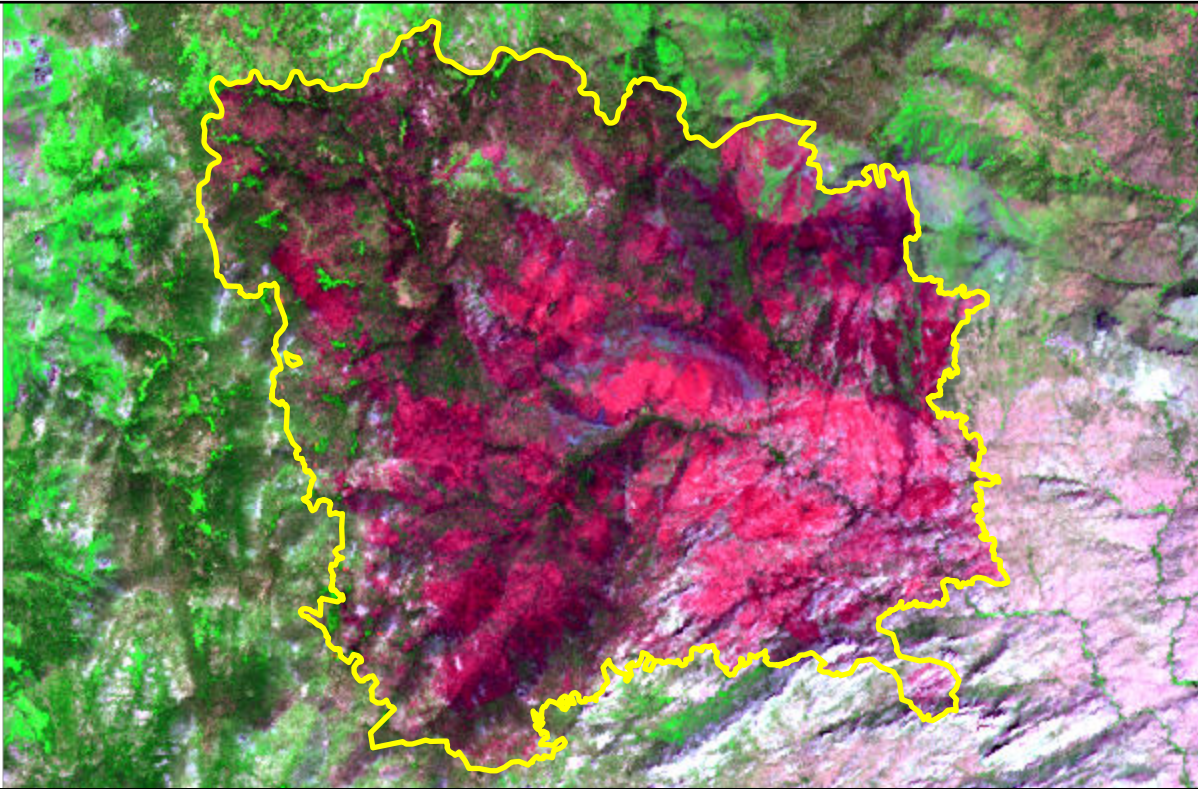


# 2024 California: TROUT

ca3599511831820240713



Latitude: 35° 58' 30.0"  
Longitude: -118° 17' 31.2"  
Fire Ignition Date: July 13, 2024  
Assessment Type: Initial  
Pre-Fire Image Date: August 29, 2023 (L8)  
Post-Fire Image Date: August 15, 2024 (L8)



## Acreage of Burn Severity

Burn Severity	Acres
Unburned to Low	1,699
Low	12,497
Moderate	7,588
High	1,867
Increased Greenness	0
Non-Processing Area Mask*	0
Total	23,651

This map portrays fire severity for the fire specified in the map title and summarizes proportions of fire severity classes. These data are produced under the Provisional Initial Assessment (PIA) mapping project jointly implemented by the USGS EROS and the USFS GTAC. The PIA mapping project ascertains the locations of fires based on available fire occurrence information provided by federal and state agencies, and other reliable sources. The PIA mapping project reserves the right to correct, update or modify geospatial inputs to this map without notification.

