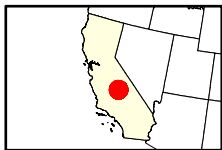
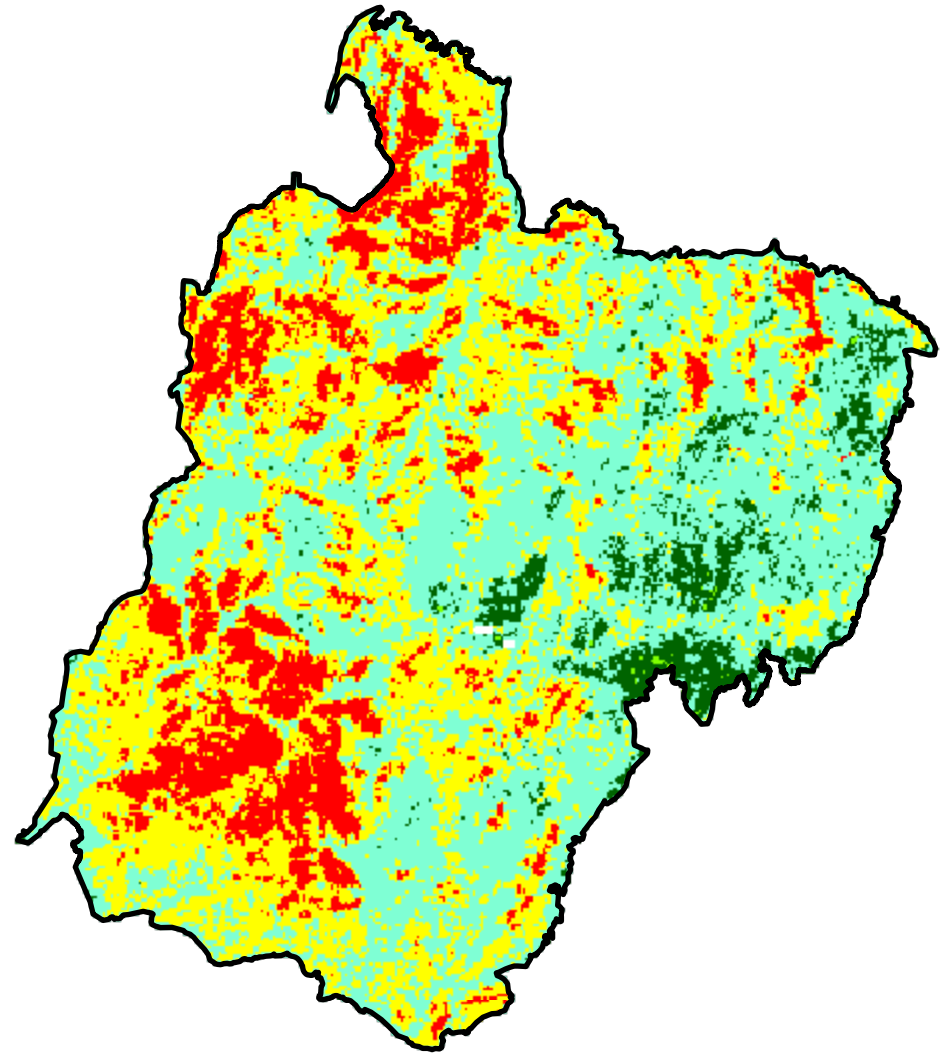
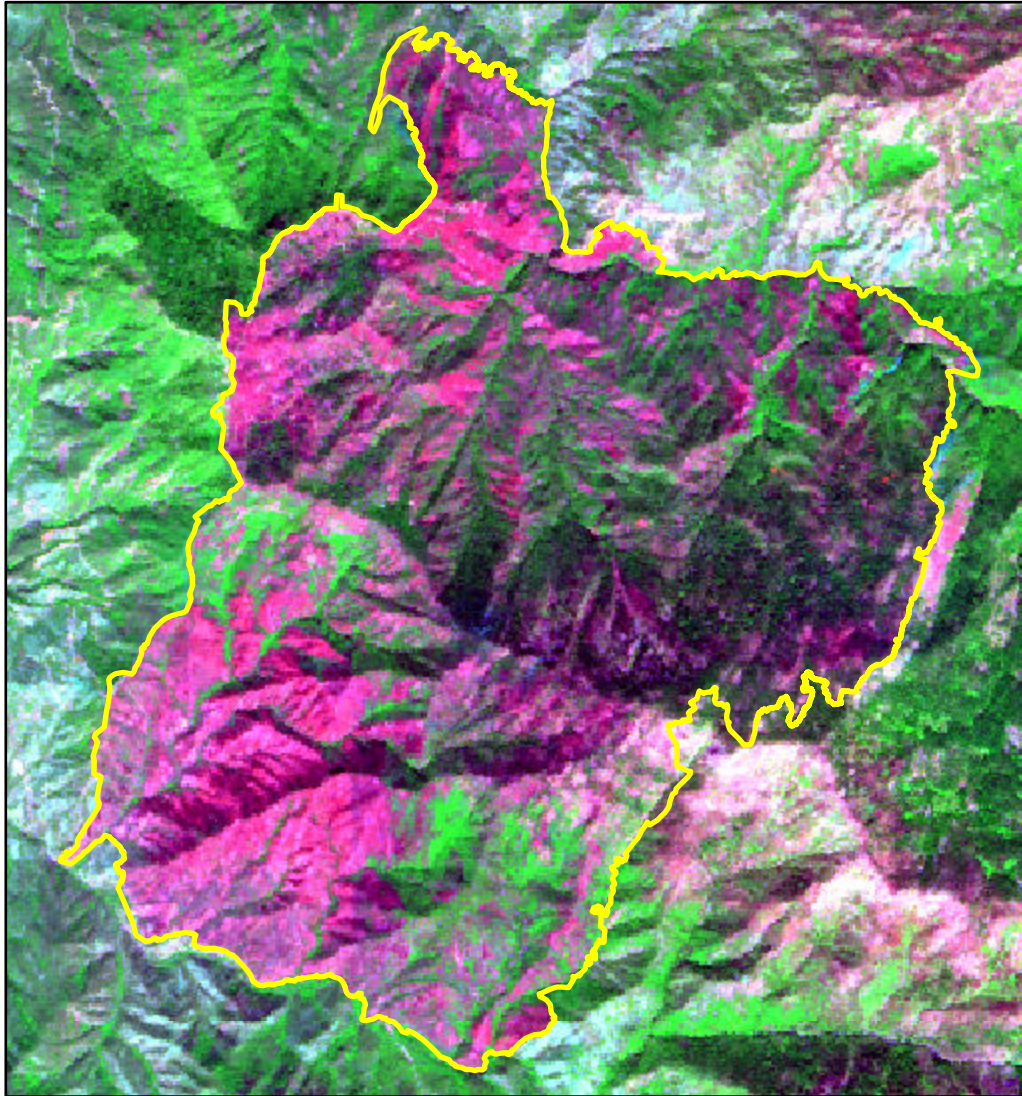


# 2024 California: COFFEE POT

ca3639211876520240803



Latitude: 36° 23' 45.6"  
Longitude: -118° 45' 36.0"  
Fire Ignition Date: August 03, 2024  
Assessment Type: Initial  
Pre-Fire Image Date: July 09, 2024 (S2A)  
Post-Fire Image Date: September 14, 2024 (S2A)



This map portrays fire severity for the fire specified in the map title and summarizes proportions of fire severity classes. These data are produced under the Provisional Initial Assessment (PIA) mapping project jointly implemented by the USGS EROS and the USFS GTAC. The PIA mapping project ascertains the locations of fires based on available fire occurrence information provided by federal and state agencies, and other reliable sources. The PIA mapping project reserves the right to correct, update or modify geospatial inputs to this map without notification.

0 1.5 3 Miles

## Acreage of Burn Severity

| Burn Severity             | Acres         |
|---------------------------|---------------|
| Unburned to Low           | 749           |
| Low                       | 6,359         |
| Moderate                  | 5,271         |
| High                      | 2,072         |
| Increased Greenness       | 12            |
| Non-Processing Area Mask* | 7             |
| <b>Total</b>              | <b>14,470</b> |