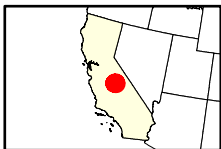
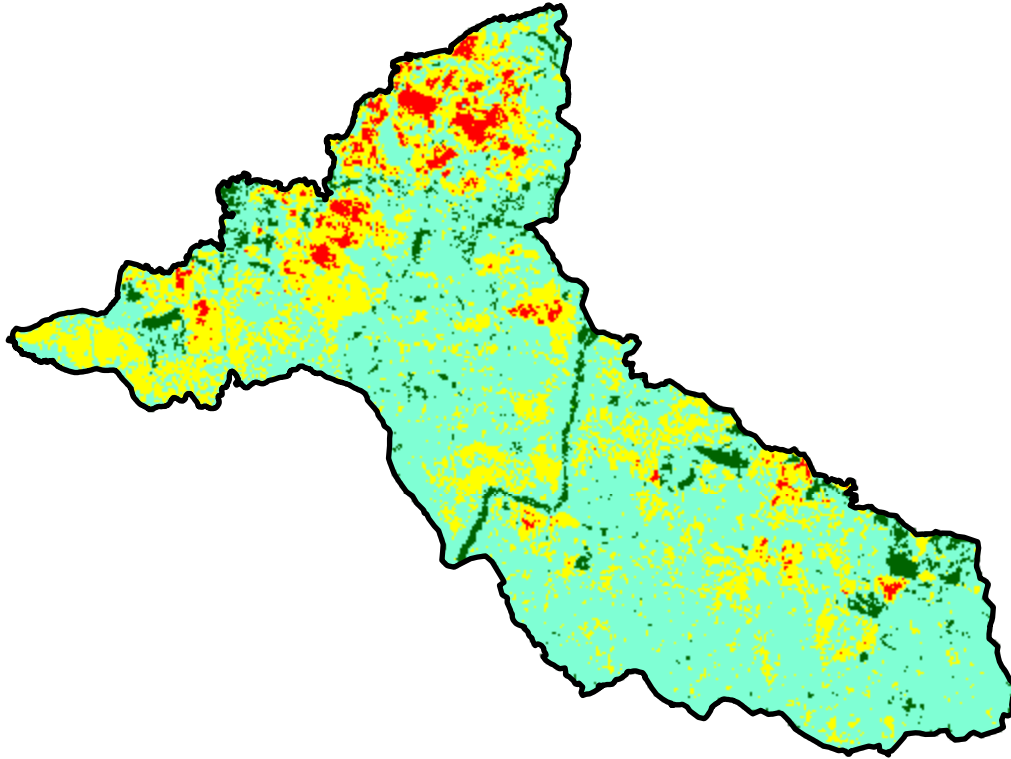
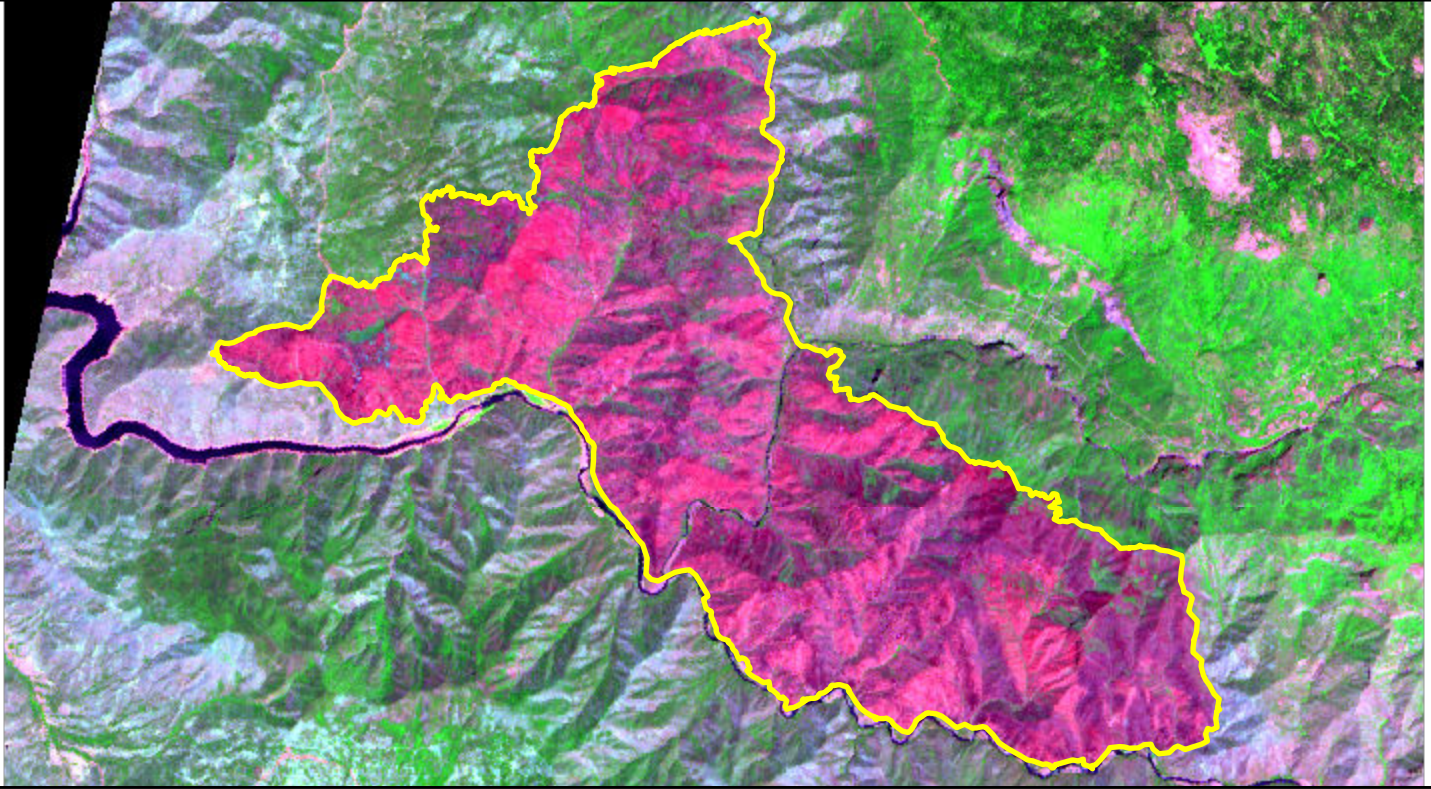


2024 California: BASIN

ca3686511910320240626



Latitude: 36° 53' 60.0"
Longitude: -119° 07' 40.8"
Fire Ignition Date: June 26, 2024
Assessment Type: Initial
Pre-Fire Image Date: August 04, 2023 (S2A)
Post-Fire Image Date: July 29, 2024 (S2A)



Acreage of Burn Severity

Burn Severity	Acres
Unburned to Low	821
Low	9,235
Moderate	3,546
High	433
Increased Greenness	2
Non-Processing Area Mask*	0
Total	14,037

This map portrays fire severity for the fire specified in the map title and summarizes proportions of fire severity classes. These data are produced under the Provisional Initial Assessment (PIA) mapping project jointly implemented by the USGS EROS and the USFS GTAC. The PIA mapping project ascertains the locations of fires based on available fire occurrence information provided by federal and state agencies, and other reliable sources. The PIA mapping project reserves the right to correct, update or modify geospatial inputs to this map without notification.

0 2 4 Miles