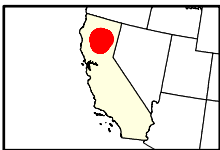
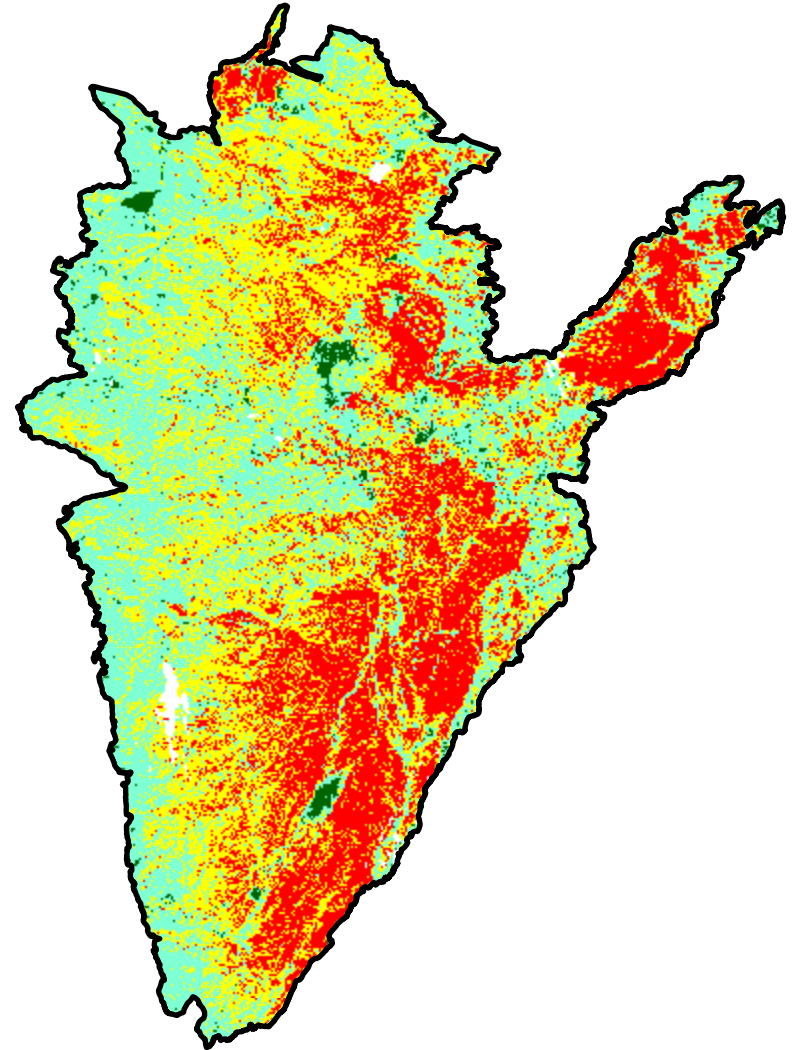
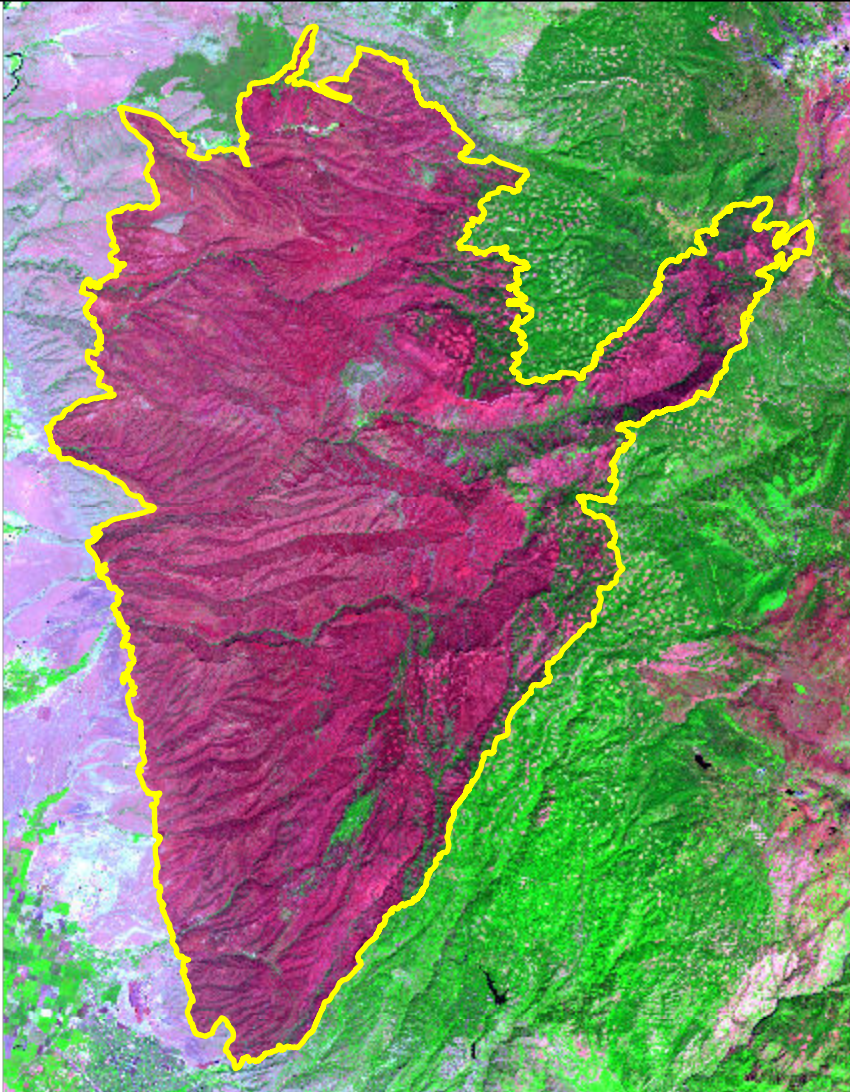


2024 California: PARK

ca3981912180320240724



Latitude: 40° 04' 58.8"
Longitude: -121° 46' 44.4"
Fire Ignition Date: July 24, 2024
Assessment Type: Initial
Pre-Fire Image Date: July 19, 2024 (L8)
Post-Fire Image Date: August 12, 2024 (L9)



Acreage of Burn Severity

Burn Severity	Acres
Unburned to Low	7,848
Low	152,723
Moderate	157,597
High	109,454
Increased Greenness	13
Non-Processing Area Mask*	2,903
Total	430,539

This map portrays fire severity for the fire specified in the map title and summarizes proportions of fire severity classes. These data are produced under the Provisional Initial Assessment (PIA) mapping project jointly implemented by the USGS EROS and the USFS GTAC. The PIA mapping project ascertains the locations of fires based on available fire occurrence information provided by federal and state agencies, and other reliable sources. The PIA mapping project reserves the right to correct, update or modify geospatial inputs to this map without notification.

0 10 20 Miles