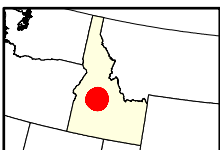
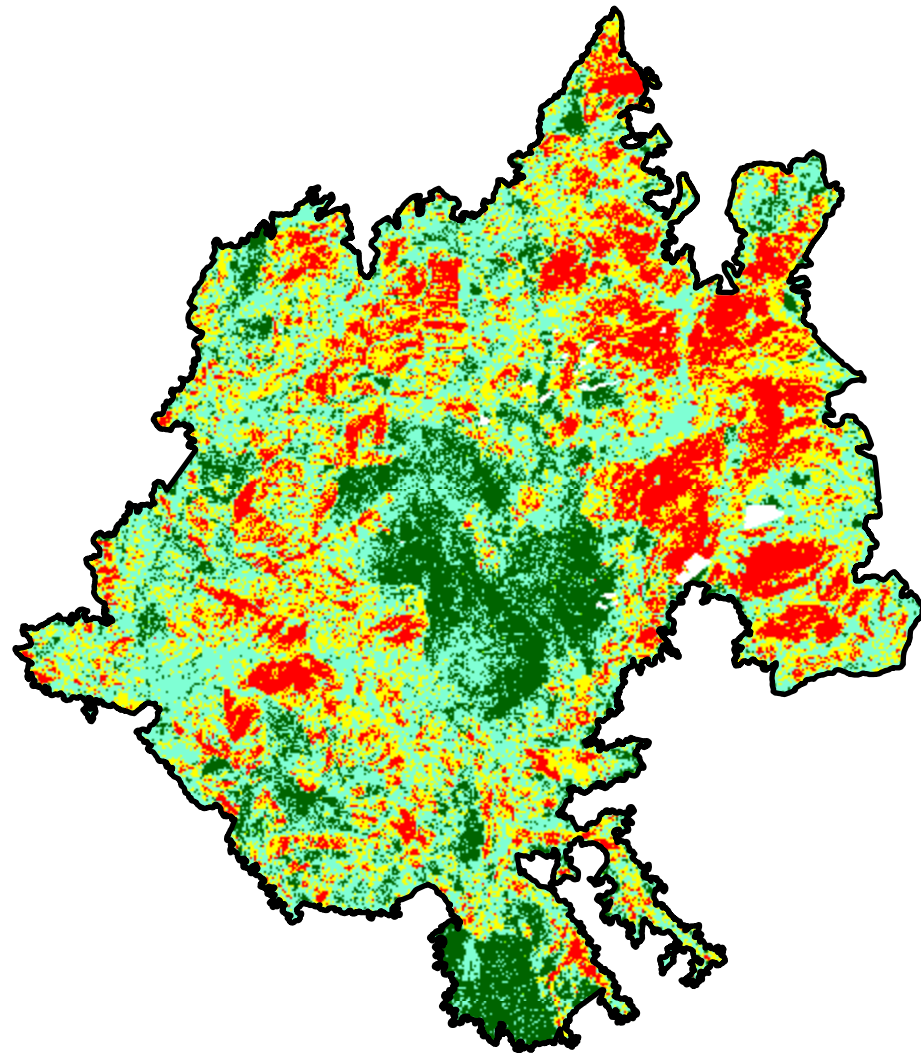
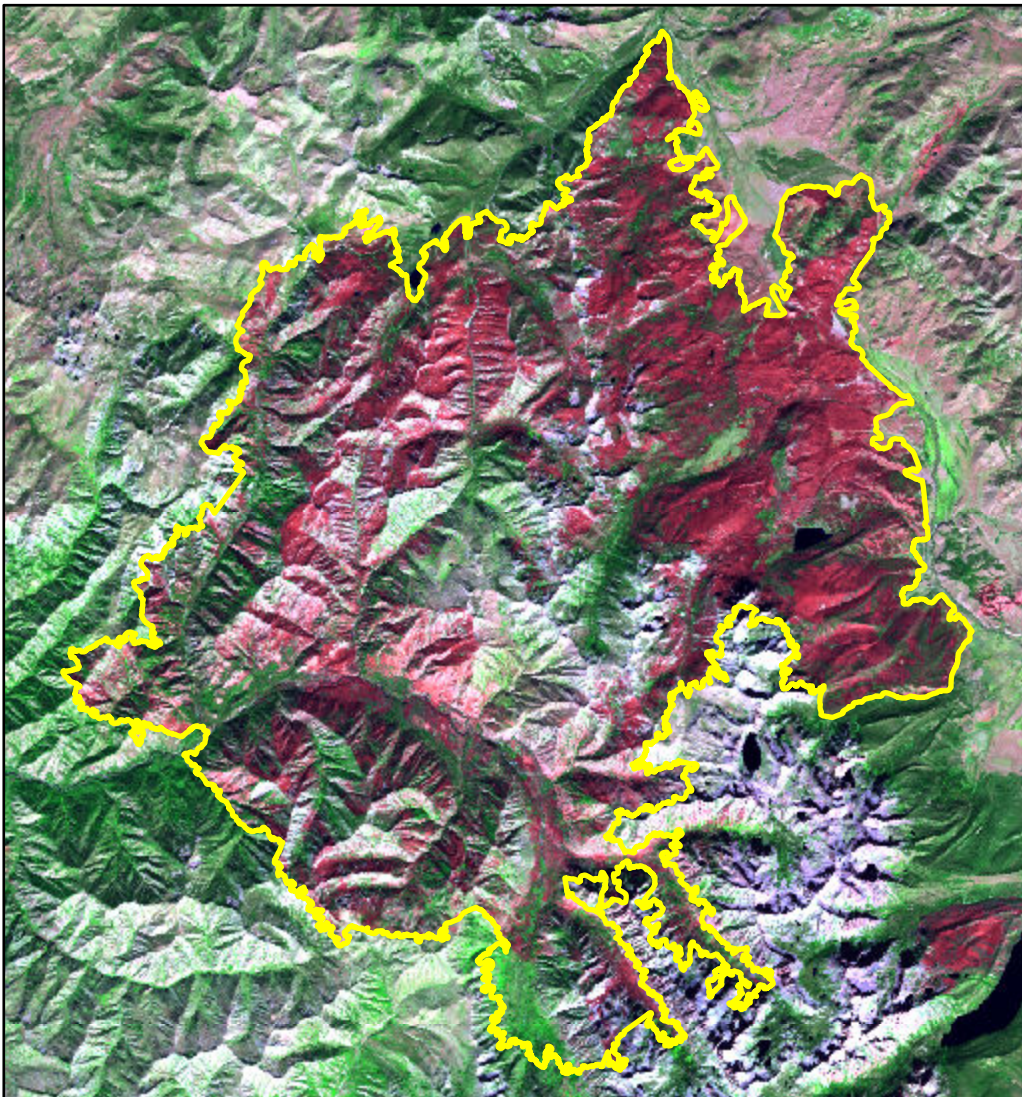


2024 Idaho: WAPITI

id4415011520520240725



Latitude: 44° 13' 37.2"
Longitude: -115° 10' 33.6"
Fire Ignition Date: July 25, 2024
Assessment Type: Initial
Pre-Fire Image Date: September 14, 2023 (L8)
Post-Fire Image Date: September 24, 2024 (L9)



This map portrays fire severity for the fire specified in the map title and summarizes proportions of fire severity classes. These data are produced under the Provisional Initial Assessment (PIA) mapping project jointly implemented by the USGS EROS and the USFS GTAC. The PIA mapping project ascertains the locations of fires based on available fire occurrence information provided by federal and state agencies, and other reliable sources. The PIA mapping project reserves the right to correct, update or modify geospatial inputs to this map without notification.

0 5.5 11 Miles

Acreage of Burn Severity

Burn Severity	Acres
Unburned to Low	24,769
Low	56,213
Moderate	37,064
High	25,287
Increased Greenness	113
Non-Processing Area Mask*	622
Total	144,067