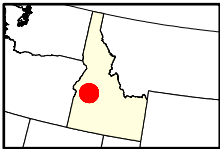
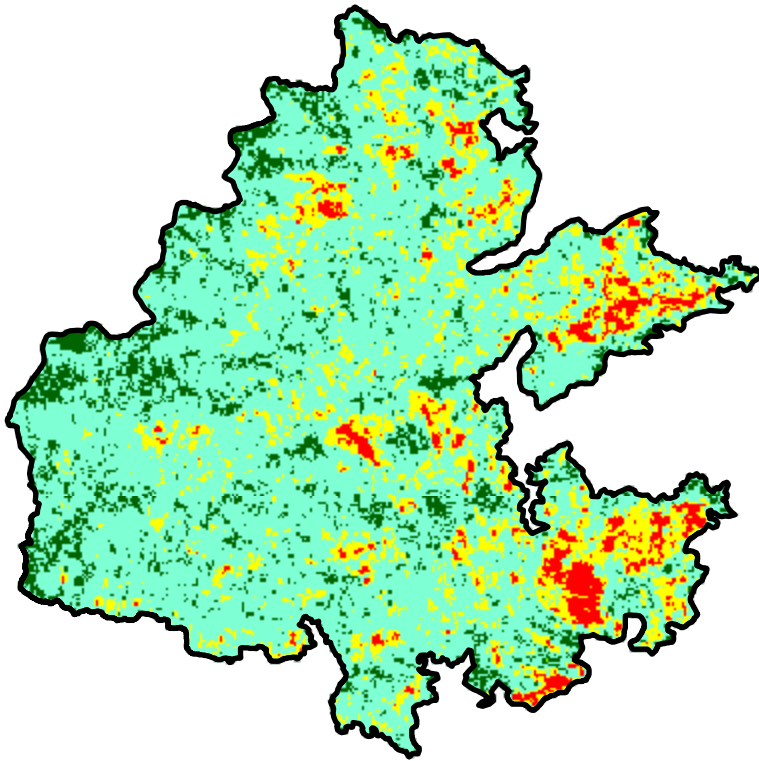
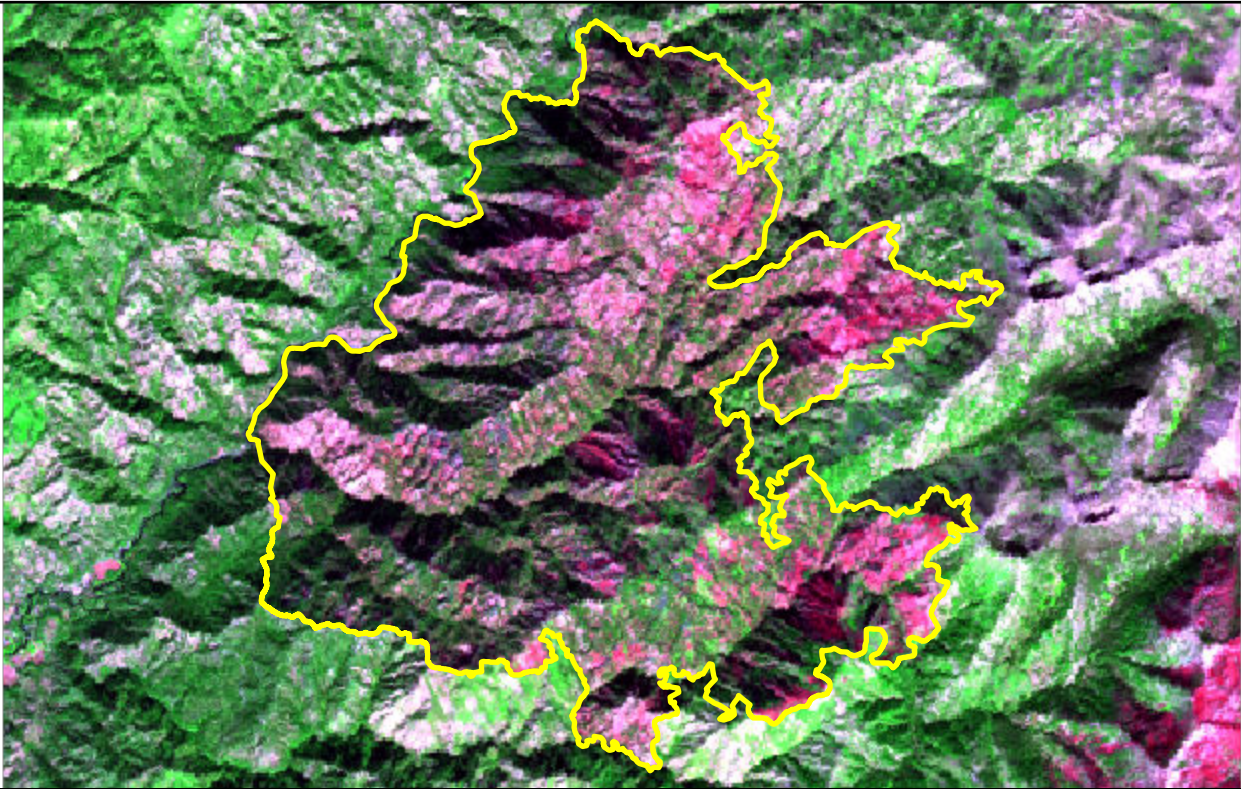


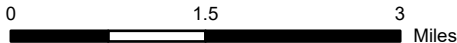
2024 Idaho: BULLDOG  
id4421211590020240805



Latitude: 44° 13' 44.4"  
Longitude: -115° 51' 36.0"  
Fire Ignition Date: August 05, 2024  
Assessment Type: Initial  
Pre-Fire Image Date: September 14, 2023 (L8)  
Post-Fire Image Date: September 24, 2024 (L9)



This map portrays fire severity for the fire specified in the map title and summarizes proportions of fire severity classes. These data are produced under the Provisional Initial Assessment (PIA) mapping project jointly implemented by the USGS EROS and the USFS GTAC. The PIA mapping project ascertains the locations of fires based on available fire occurrence information provided by federal and state agencies, and other reliable sources. The PIA mapping project reserves the right to correct, update or modify geospatial inputs to this map without notification.



Acreage of Burn Severity	
Burn Severity	Acres
Unburned to Low	1,347
Low	7,878
Moderate	1,741
High	471
Increased Greenness	1
Non-Processing Area Mask*	0
Total	11,438