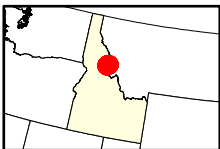
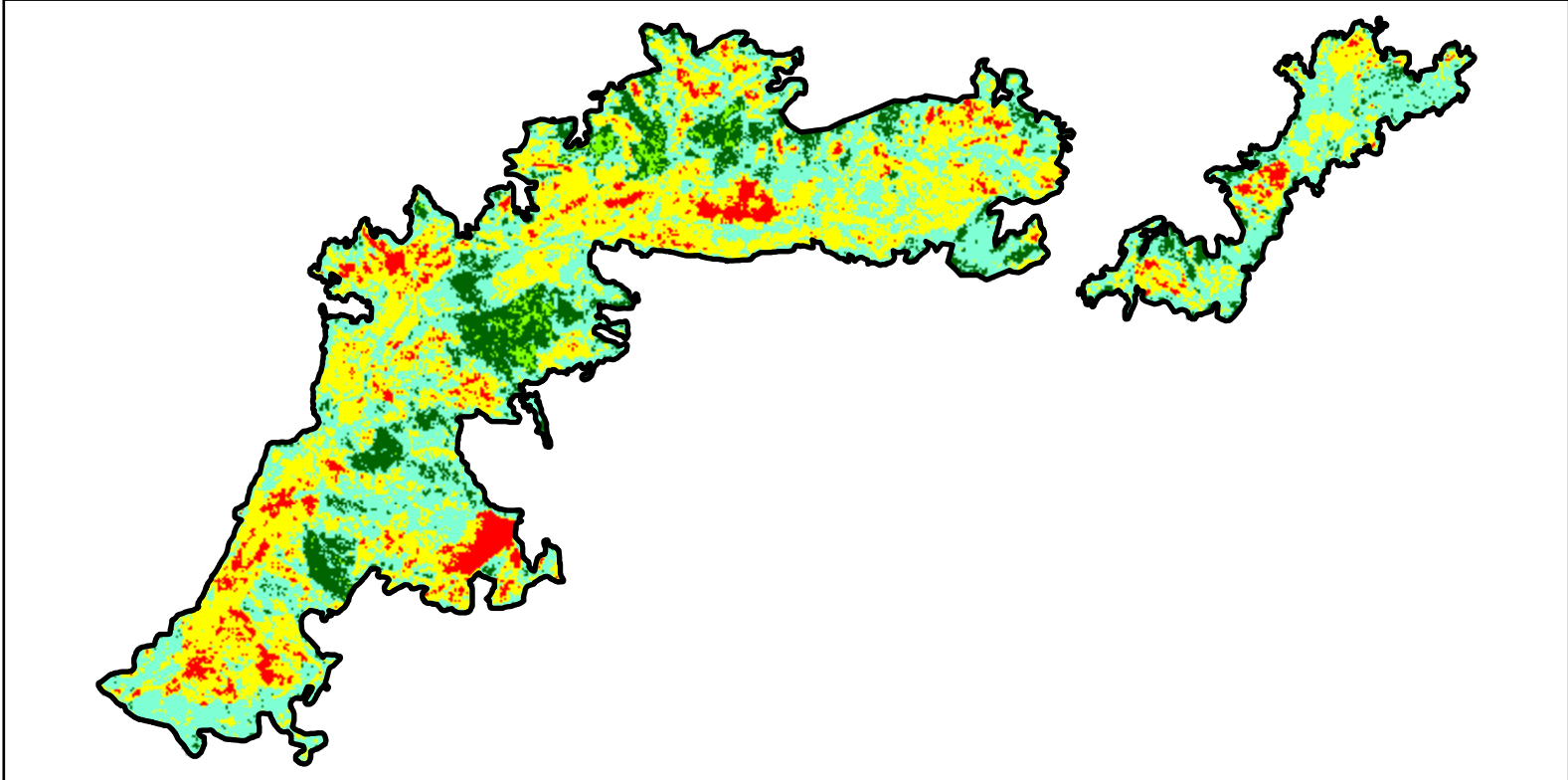
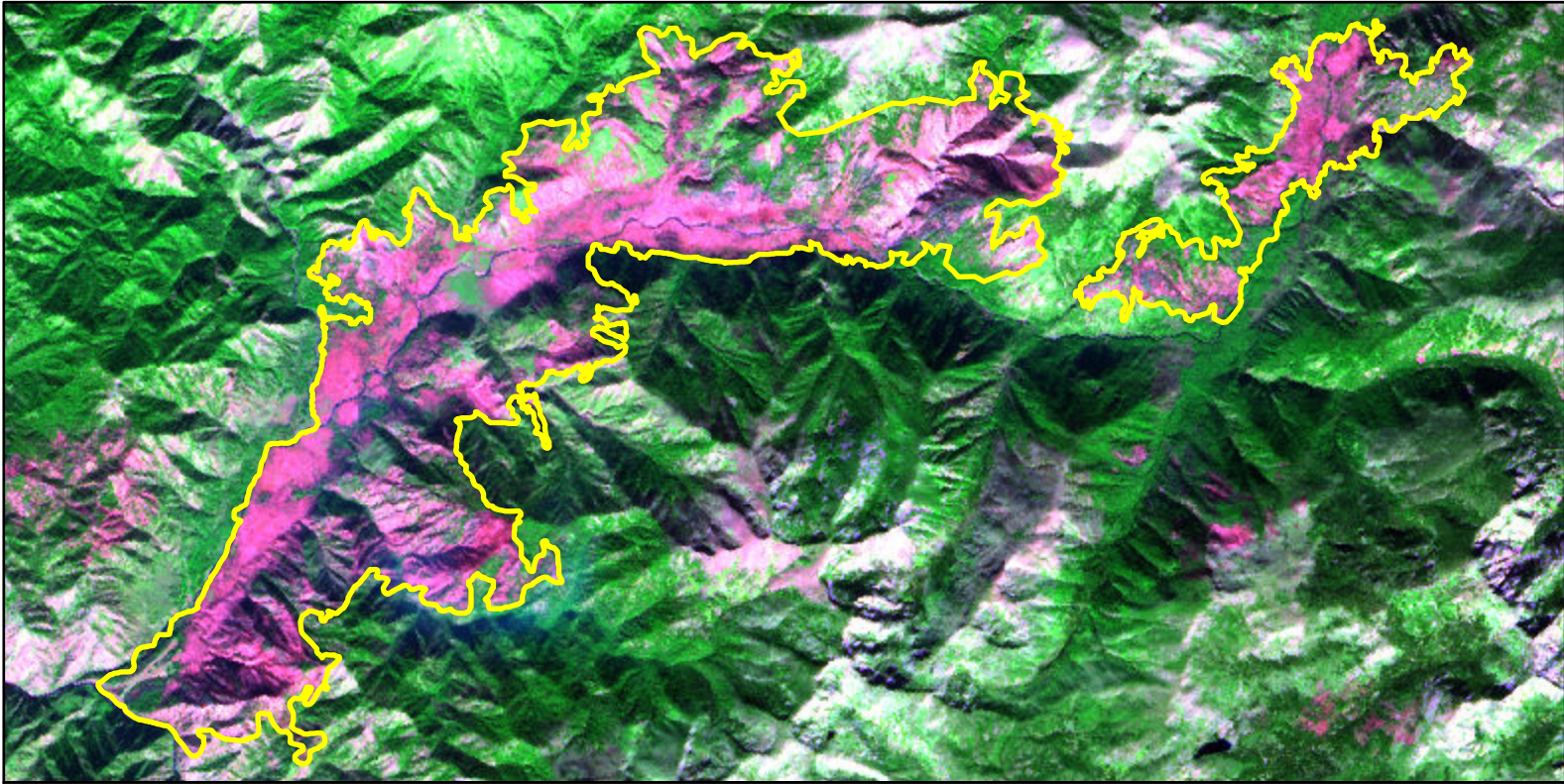


2024 Idaho: WYE

id4620611482620240725



Latitude: 46° 10' 58.8"
Longitude: -114° 48' 25.2"
Fire Ignition Date: July 25, 2024
Assessment Type: Initial
Pre-Fire Image Date: October 08, 2023 (S2B)
Post-Fire Image Date: October 07, 2024 (S2A)



Acreage of Burn Severity

Burn Severity	Acres
Unburned to Low	1,841
Low	6,110
Moderate	5,307
High	915
Increased Greenness	176
Non-Processing Area Mask*	0
Total	14,350

0 2 4 Miles

This map portrays fire severity for the fire specified in the map title and summarizes proportions of fire severity classes. These data are produced under the Provisional Initial Assessment (PIA) mapping project jointly implemented by the USGS EROS and the USFS GTAC. The PIA mapping project ascertains the locations of fires based on available fire occurrence information provided by federal and state agencies, and other reliable sources. The PIA mapping project reserves the right to correct, update or modify geospatial inputs to this map without notification.