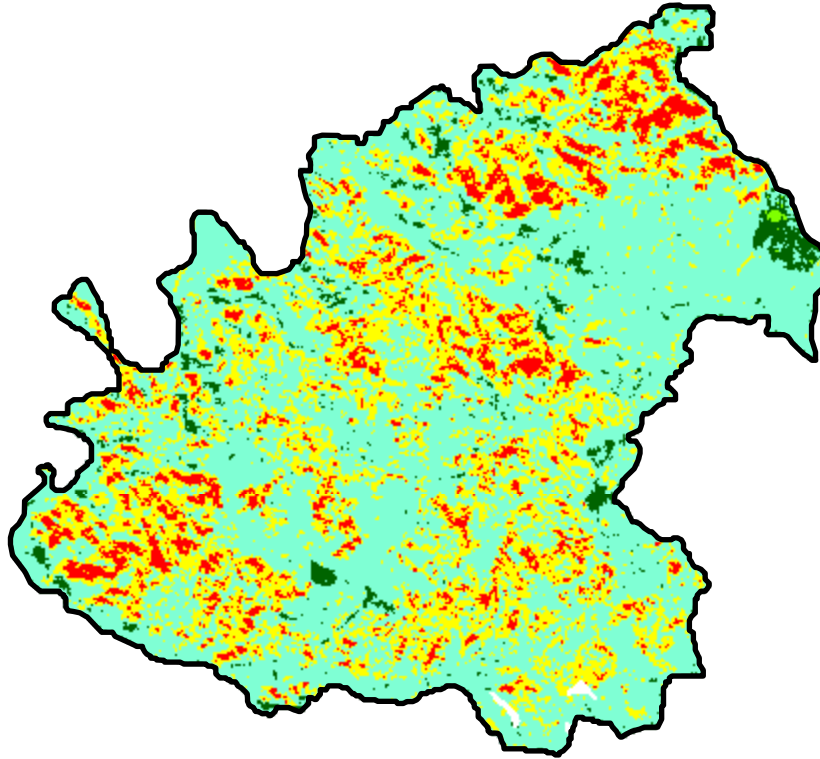


2024 Montana: DEADMAN

mt4522010662320240712



Latitude: 45° 10' 51.6"
Longitude: -106° 40' 08.4"
Fire Ignition Date: July 12, 2024
Assessment Type: Initial
Pre-Fire Image Date: September 11, 2022 (S2B)
Post-Fire Image Date: August 16, 2024 (S2A)



Acreage of Burn Severity

Burn Severity	Acres
Unburned to Low	707
Low	11,844
Moderate	5,756
High	1,670
Increased Greenness	13
Non-Processing Area Mask*	35
Total	20,025

0 2 4 Miles

This map portrays fire severity for the fire specified in the map title and summarizes proportions of fire severity classes. These data are produced under the Provisional Initial Assessment (PIA) mapping project jointly implemented by the USGS EROS and the USFS GTAC. The PIA mapping project ascertains the locations of fires based on available fire occurrence information provided by federal and state agencies, and other reliable sources. The PIA mapping project reserves the right to correct, update or modify geospatial inputs to this map without notification.