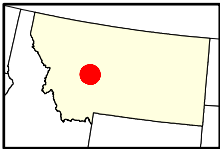
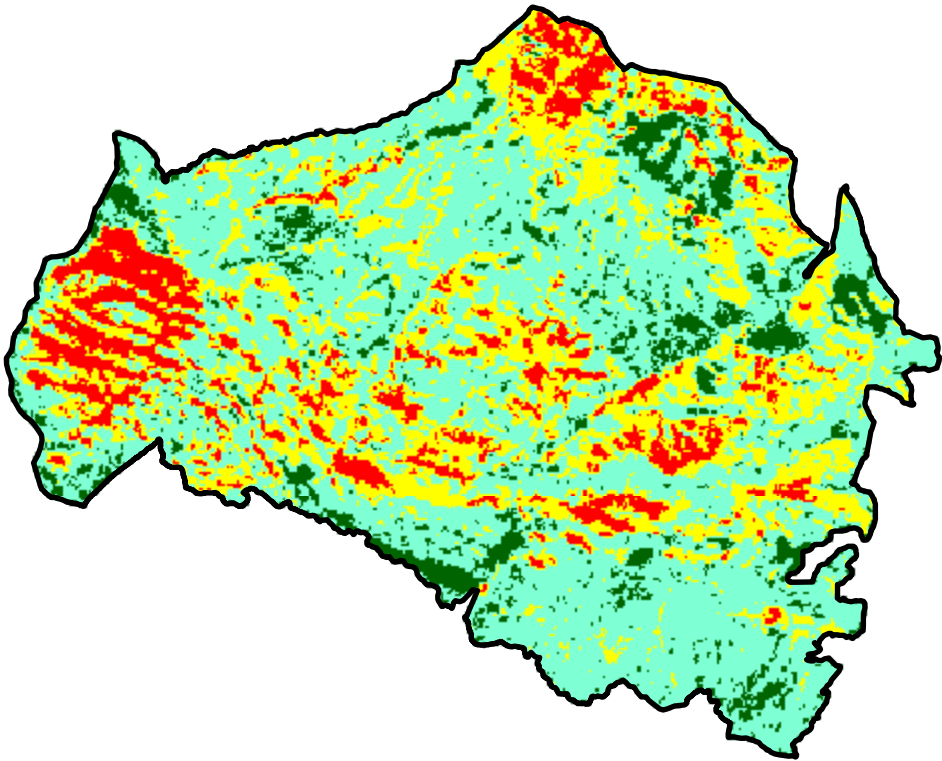
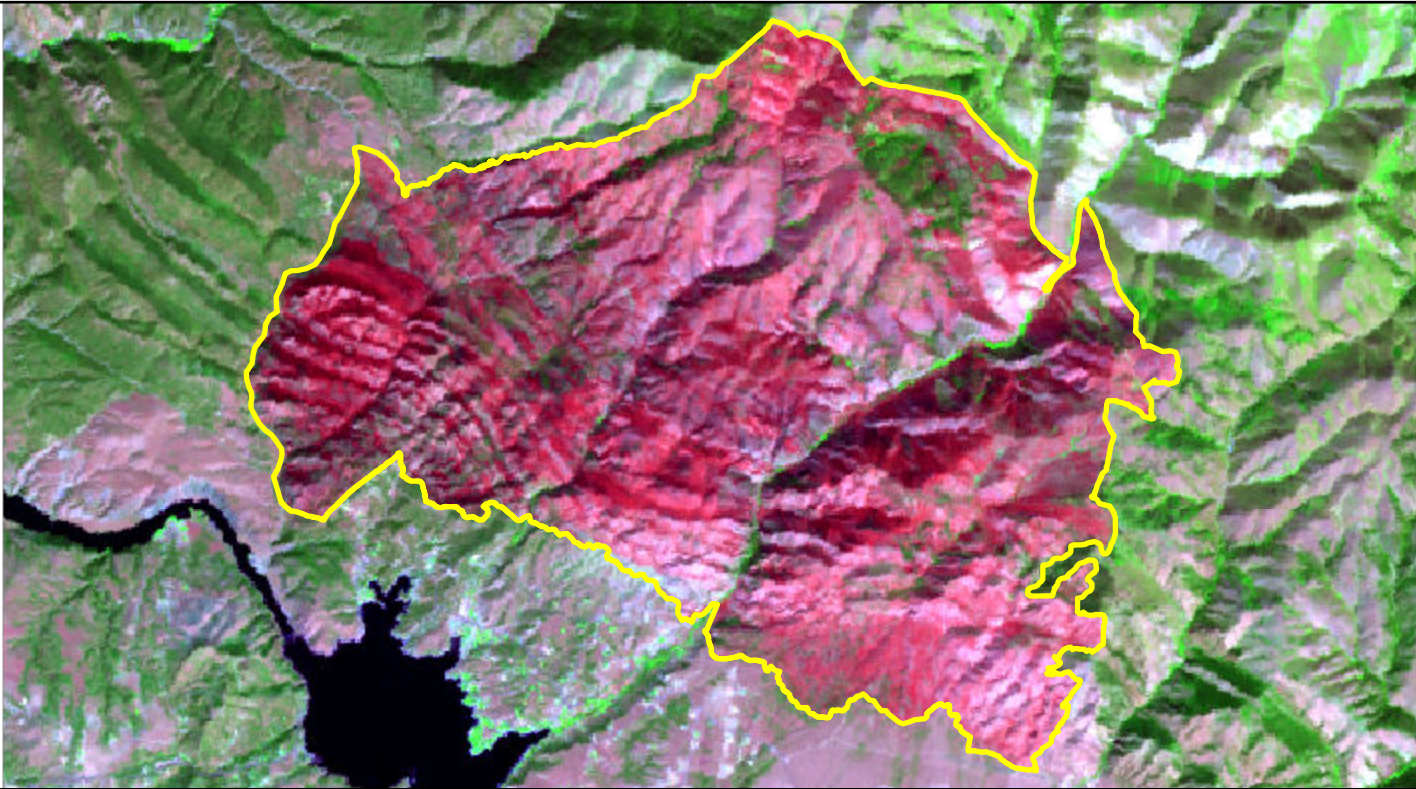


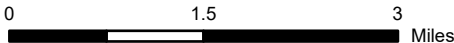
2024 Montana: HORSE GULCH
mt4668911169620240709



Latitude: 46° 41' 13.2"
Longitude: -111° 40' 04.8"
Fire Ignition Date: July 09, 2024
Assessment Type: Initial
Pre-Fire Image Date: August 15, 2023 (L8)
Post-Fire Image Date: August 17, 2024 (L8)



This map portrays fire severity for the fire specified in the map title and summarizes proportions of fire severity classes. These data are produced under the Provisional Initial Assessment (PIA) mapping project jointly implemented by the USGS EROS and the USFS GTAC. The PIA mapping project ascertains the locations of fires based on available fire occurrence information provided by federal and state agencies, and other reliable sources. The PIA mapping project reserves the right to correct, update or modify geospatial inputs to this map without notification.



Acreage of Burn Severity	
Burn Severity	Acres
Unburned to Low	1,451
Low	8,234
Moderate	3,984
High	1,553
Increased Greenness	0
Non-Processing Area Mask*	0
Total	15,222