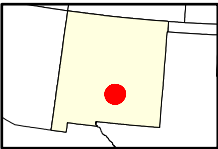
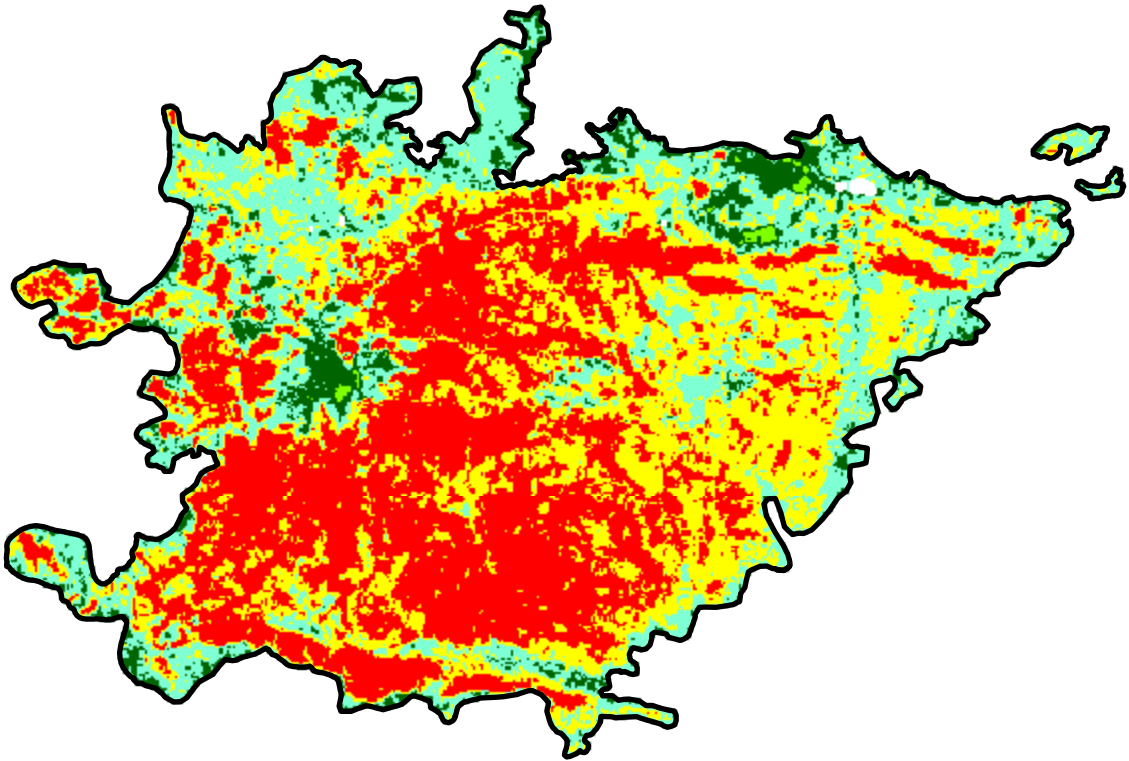
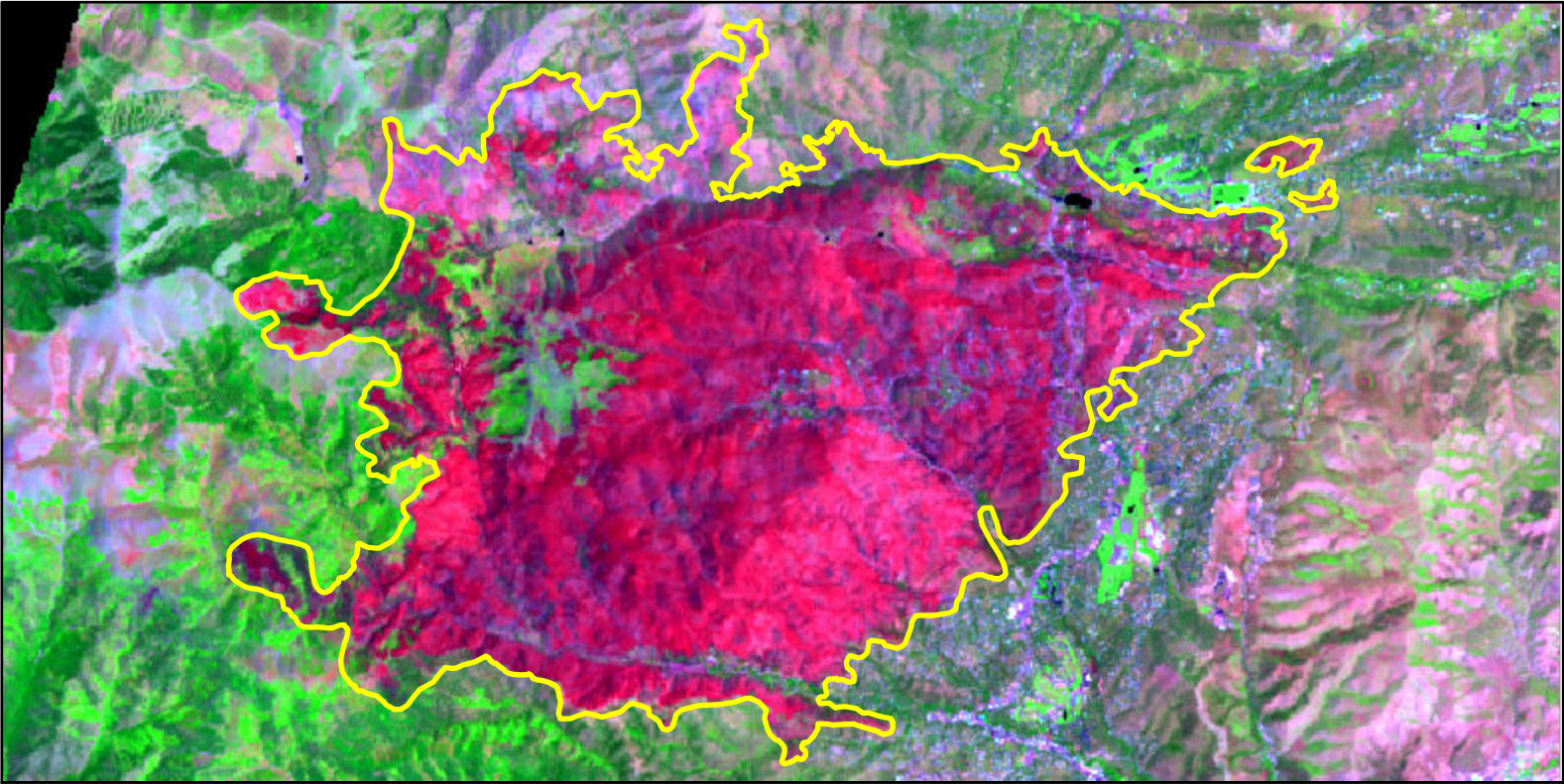


2024 New Mexico: SOUTH FORK

nm3333810576620240617



Latitude: 33° 22' 12.0"
Longitude: -105° 42' 54.0"
Fire Ignition Date: June 17, 2024
Assessment Type: Initial
Pre-Fire Image Date: June 19, 2023 (L9)
Post-Fire Image Date: July 07, 2024 (L9)



This map portrays fire severity for the fire specified in the map title and summarizes proportions of fire severity classes. These data are produced under the Provisional Initial Assessment (PIA) mapping project jointly implemented by the USGS EROS and the USFS GTAC. The PIA mapping project ascertains the locations of fires based on available fire occurrence information provided by federal and state agencies, and other reliable sources. The PIA mapping project reserves the right to correct, update or modify geospatial inputs to this map without notification.

Acreage of Burn Severity

Burn Severity	Acres
Unburned to Low	1,276
Low	4,319
Moderate	5,648
High	6,597
Increased Greenness	44
Non-Processing Area Mask*	27
Total	17,910

