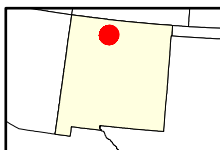
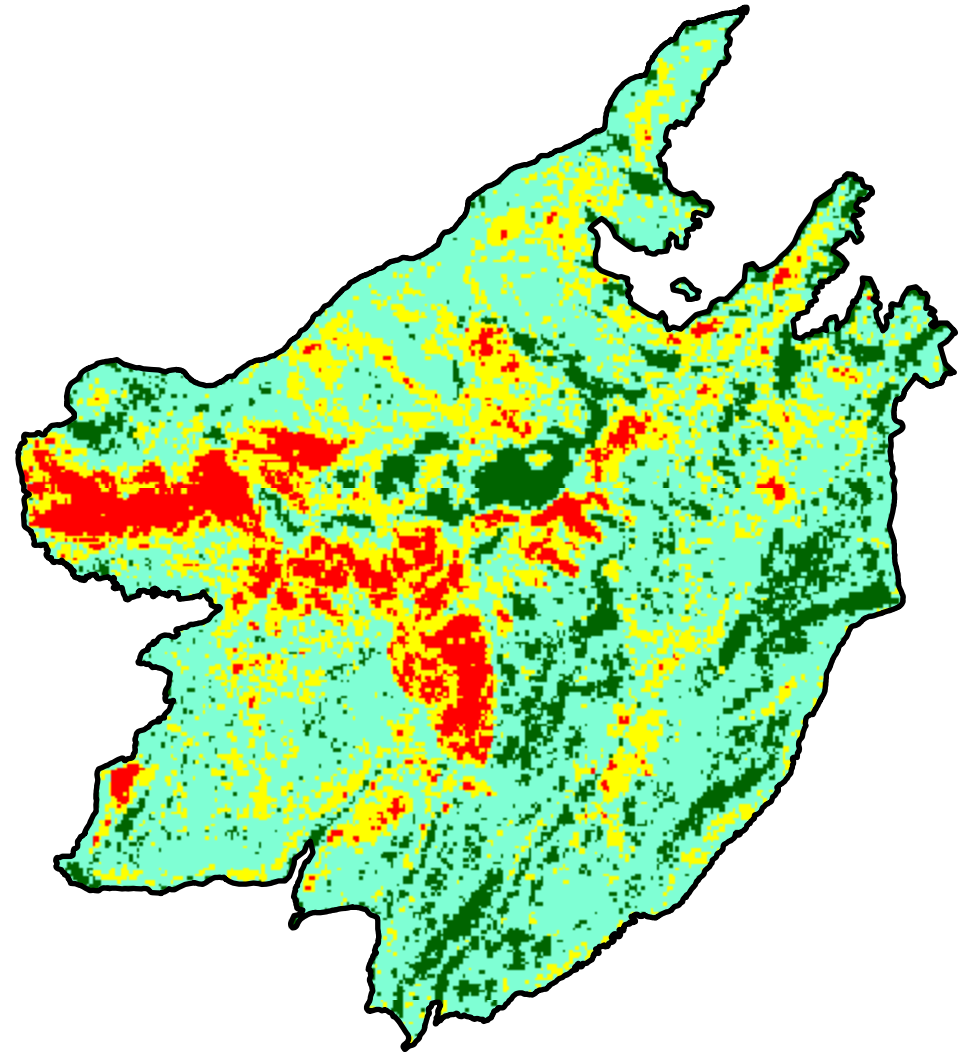
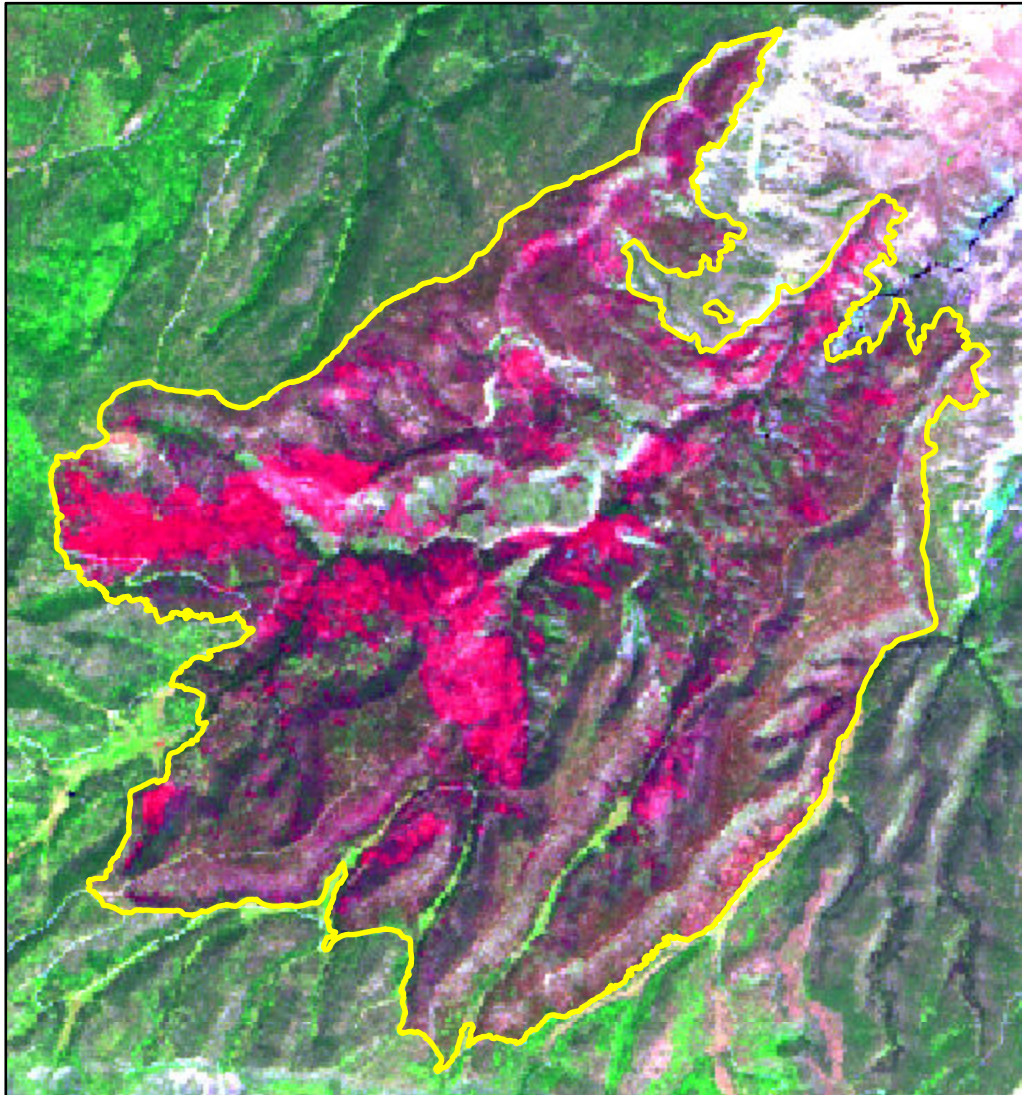


# 2024 New Mexico: INDIOS

nm3628710670120240519



Latitude: 36° 16' 22.8"  
Longitude: -106° 42' 10.8"  
Fire Ignition Date: May 19, 2024  
Assessment Type: Initial  
Pre-Fire Image Date: June 20, 2023 (S2A)  
Post-Fire Image Date: July 04, 2024 (S2A)



This map portrays fire severity for the fire specified in the map title and summarizes proportions of fire severity classes. These data are produced under the Provisional Initial Assessment (PIA) mapping project jointly implemented by the USGS EROS and the USFS GTAC. The PIA mapping project ascertains the locations of fires based on available fire occurrence information provided by federal and state agencies, and other reliable sources. The PIA mapping project reserves the right to correct, update or modify geospatial inputs to this map without notification.

0 1.5 3 Miles

## Acreage of Burn Severity

Burn Severity	Acres
Unburned to Low	1,660
Low	6,326
Moderate	2,583
High	902
Increased Greenness	0
Non-Processing Area Mask*	0
<b>Total</b>	<b>11,471</b>