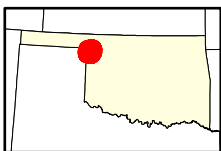
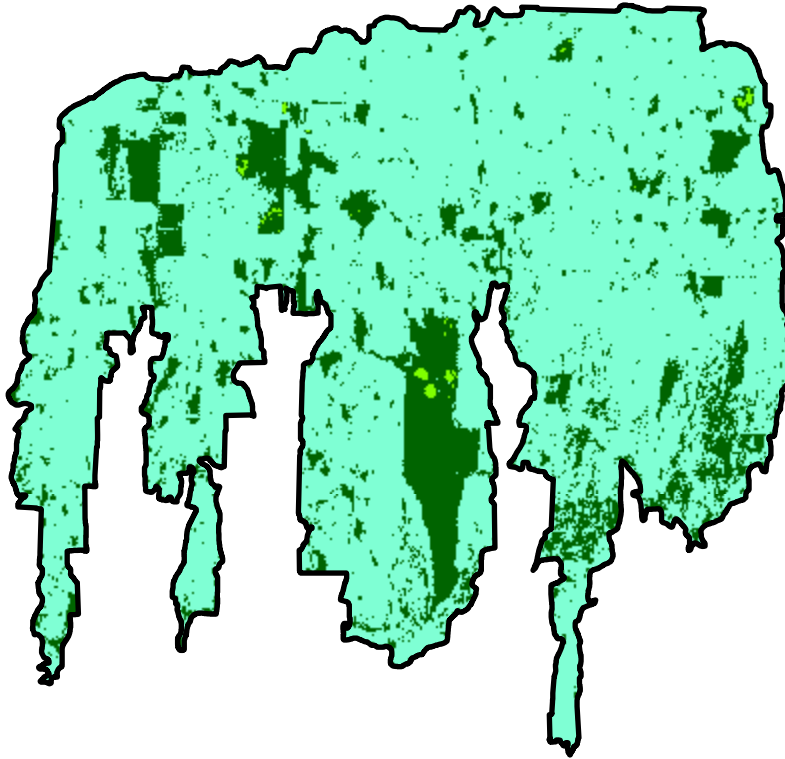


2024 Oklahoma: CATESBY FIRE

ok3643909995620240227



Latitude: 36° 22' 33.6"
Longitude: -99° 50' 24.0"
Fire Ignition Date: February 27, 2024
Assessment Type: Initial
Pre-Fire Image Date: February 25, 2024 (L9)
Post-Fire Image Date: March 12, 2024 (L9)



Acreage of Burn Severity

Burn Severity	Acres
Unburned to Low	15,432
Low	69,007
Moderate	0
High	0
Increased Greenness	189
Non-Processing Area Mask*	0
Total	84,628

This map portrays fire severity for the fire specified in the map title and summarizes proportions of fire severity classes. These data are produced under the Provisional Initial Assessment (PIA) mapping project jointly implemented by the USGS EROS and the USFS GTAC. The PIA mapping project ascertains the locations of fires based on available fire occurrence information provided by federal and state agencies, and other reliable sources. The PIA mapping project reserves the right to correct, update or modify geospatial inputs to this map without notification.

0 4.5 9 Miles