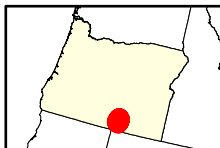
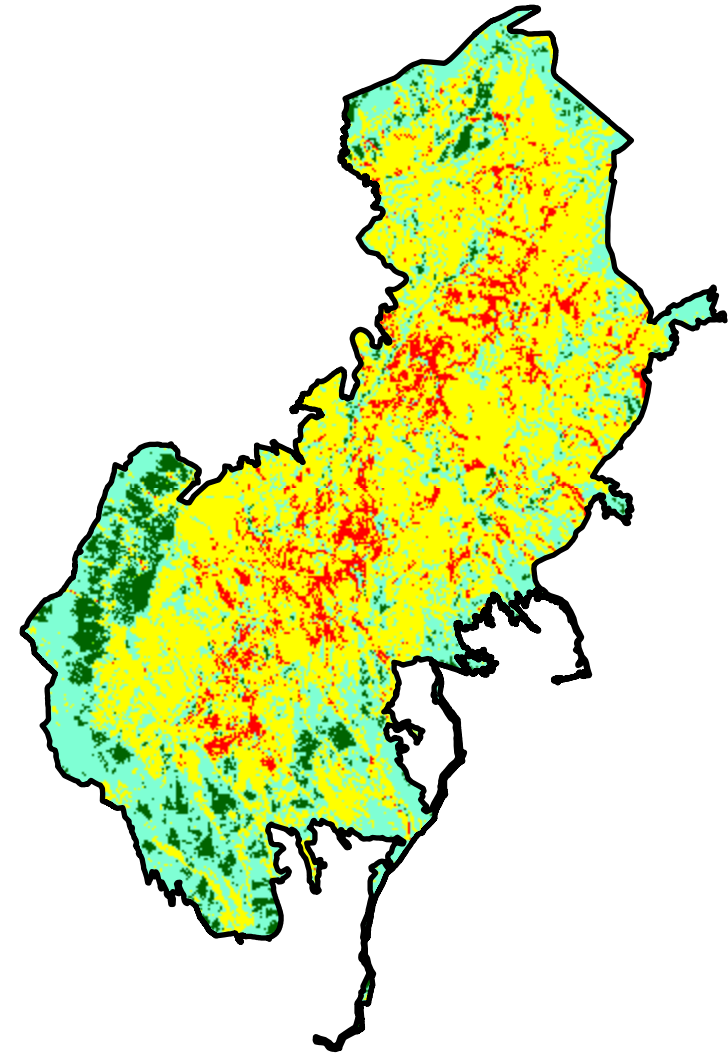
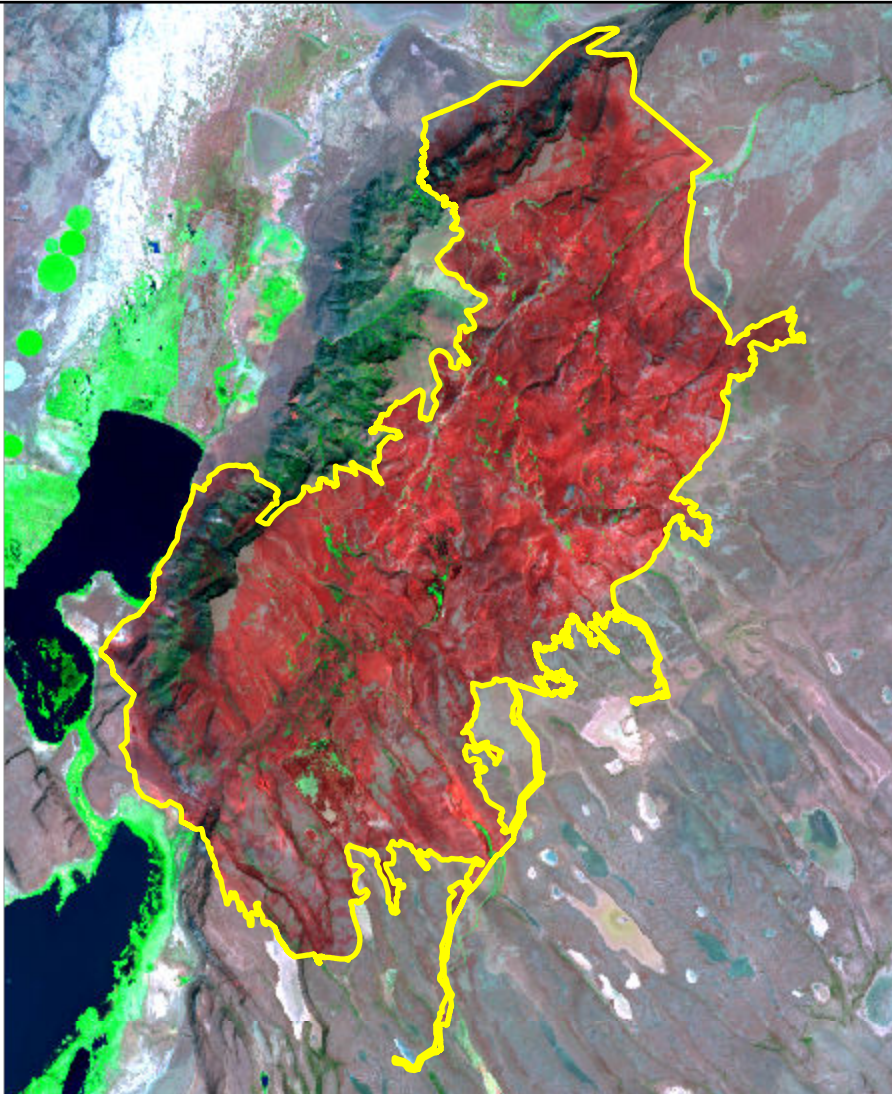


2024 Oregon: WARNER PEAK

or4242811980520240806



Latitude: 42° 26' 06.0"
Longitude: -119° 43' 33.6"
Fire Ignition Date: August 06, 2024
Assessment Type: Initial
Pre-Fire Image Date: July 20, 2024 (L9)
Post-Fire Image Date: August 28, 2024 (L9)



This map portrays fire severity for the fire specified in the map title and summarizes proportions of fire severity classes. These data are produced under the Provisional Initial Assessment (PIA) mapping project jointly implemented by the USGS EROS and the USFS GTAC. The PIA mapping project ascertains the locations of fires based on available fire occurrence information provided by federal and state agencies, and other reliable sources. The PIA mapping project reserves the right to correct, update or modify geospatial inputs to this map without notification.

0 4.5 9 Miles

Acreage of Burn Severity

Burn Severity	Acres
Unburned to Low	4,804
Low	22,030
Moderate	34,848
High	4,681
Increased Greenness	15
Non-Processing Area Mask*	0
Total	66,378