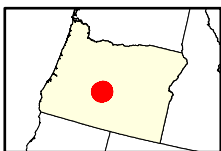
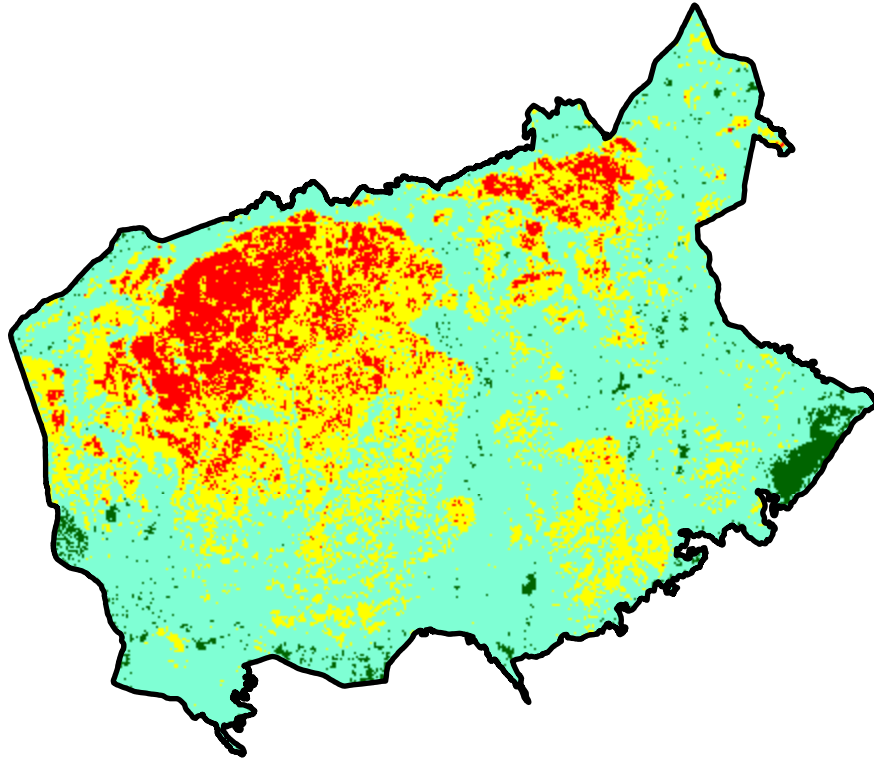
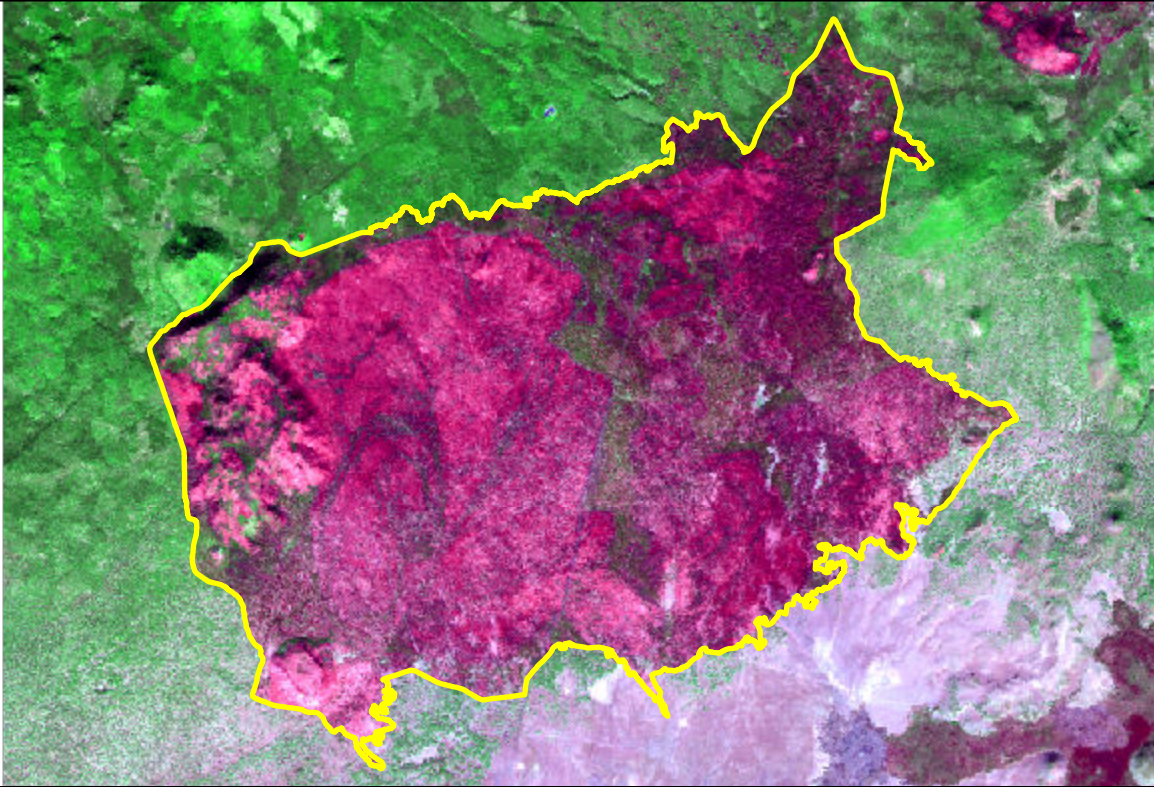


# 2024 Oregon: FLAT TOP

or4349712110220240907



Latitude: 43° 33' 25.2"  
Longitude: -121° 03' 43.2"  
Fire Ignition Date: September 07, 2024  
Assessment Type: Initial  
Pre-Fire Image Date: October 05, 2023 (L8)  
Post-Fire Image Date: October 07, 2024 (L8)



## Acreage of Burn Severity

Burn Severity	Acres
Unburned to Low	965
Low	21,726
Moderate	10,363
High	3,470
Increased Greenness	0
Non-Processing Area Mask*	0
<b>Total</b>	<b>36,525</b>

This map portrays fire severity for the fire specified in the map title and summarizes proportions of fire severity classes. These data are produced under the Provisional Initial Assessment (PIA) mapping project jointly implemented by the USGS EROS and the USFS GTAC. The PIA mapping project ascertains the locations of fires based on available fire occurrence information provided by federal and state agencies, and other reliable sources. The PIA mapping project reserves the right to correct, update or modify geospatial inputs to this map without notification.

0 3 6 Miles